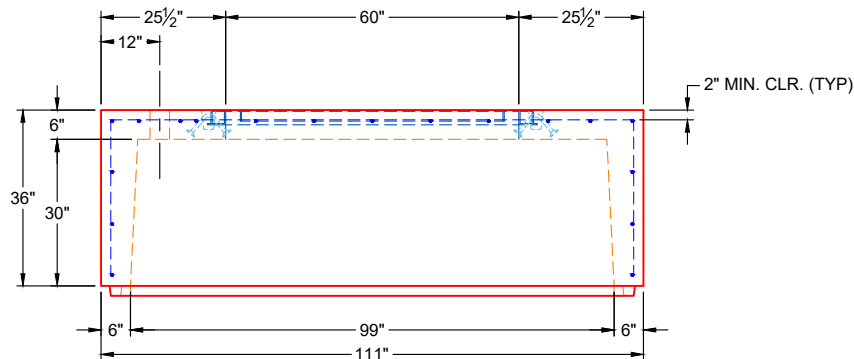


**PLAN VIEW
(RIGHT SIDE UP)**

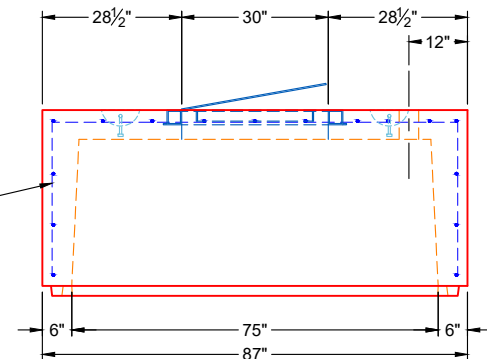
GENERAL NOTES:

1. MANUFACTURED TO ASTM C-913 (LATEST REVISION)
2. CONCRETE: 5,000 PSI AT 28 DAYS
3. REINFORCEMENT: #4 BAR @ 12" C.C. E.W. (GRADE 60) - 2" MIN. REBAR CLEARANCE (TYP)
4. WEIGHTS: 10,290 LBS
5. HALLIDAY W1S 30" X 60" HATCH SUPPLIED BY ICAST - HATCH TO BE CAST INTO FLAT LID
6. JOINT SEALANT: CONSEAL CS-102 - 1" (PRIMARY & SECONDARY ROWS)
EXTERIOR WRAP: CONSEAL CS-212 - 6" WIDE
7. LIFTERS: 4 EA. 5CA14 CONAC A-ANCHORS FOR PLANT & FIELD HANDLING
8. TOP SURFACE OF MONOTOP TO RECEIVE LIGHT BRUSH FINISH



**VIEW A
(RIGHT SIDE UP)**

#4 BAR @ 12" C.C. E.W.
(GRADE 60) - TOP &
WALLS TYP



**VIEW B
(RIGHT SIDE UP)**

PRODUCTION WORK ORDER

PRODUCT I.D.: BX7296-06W06T-VF-MT

DESCRIPTION: 72" X 96" X 36" VALVE VAULT MONOTOP



QUALITY CONTROL CHECKLIST

- ALL DIMENSIONS CORRECT.
- LIFTERS INSTALLED.
- HOLE LOCATION(S) CORRECT.
- REINFORCING CORRECT.
- HATCH LOCATION & ORIENTATION.
- EDGES CHAMFERED.
- JOINT INSTALLED.

PRODUCT VIEW: RIGHT SIDE UP

CUSTOMER: WEDDLE ENTERPRISES, INC.

PLANT: BEAVER DAM, KY

PROJECT: EAST JESSAMINE MIDDLE SCHOOL PS

WEIGHT: 10,290 LBS

STRUCTURE: VALVE VAULT

TOP SECTION JOINT: TONGUE

ORDER NO: 24-2754

BASE SECTION JOINT: N / A

PE: J.H. ROSS

DRAWING: K. CARDWELL

QC CHECK INITIALS:

DATE: 09/17/25

SCALE: NTS

PG. 1 OF 1