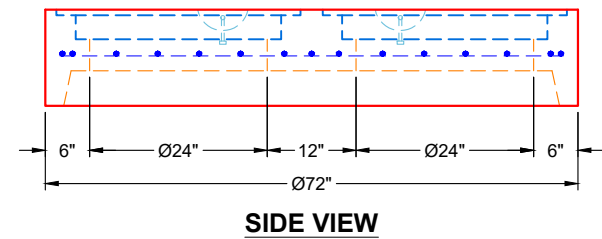
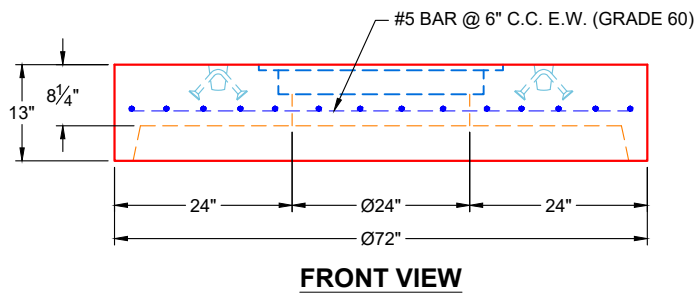


**GENERAL NOTES**

1. PER ASTM C-478 SPECIFICATIONS
2. CONCRETE: 5,000 PSI AT 28 DAYS
3. REINFORCEMENT: #5 BAR @ 6" C.C. E.W. (GRADE 60)
4. WEIGHT: 2,760 LBS
5. 2 EA. HOE MCS-288 FRAMES & COVERS LETTERED "SANITARY" SUPPLIED BY ICAST



**REVISION INFORMATION**

REV.  DATE:	NO REVISIONS TO DATE



SUBMITTAL DRAWING: Ø60" MH 13" HT. FLAT LID SPECIAL		
CUSTOMER: WEDDLE ENTERPRISES, INC.		
PROJECT: EAST JESSAMINE MIDDLE SCHOOL PS		
STRUCTURE: ARV 19+97 - STA 19+97		
QUOTE/SALES ORDER NO: 24-2754		
CHECKED BY: B. SMITH	DRAWN BY: K. CARDWELL	
DATE: 08/07/25	SCALE: NTS	PG. 1 OF 1