

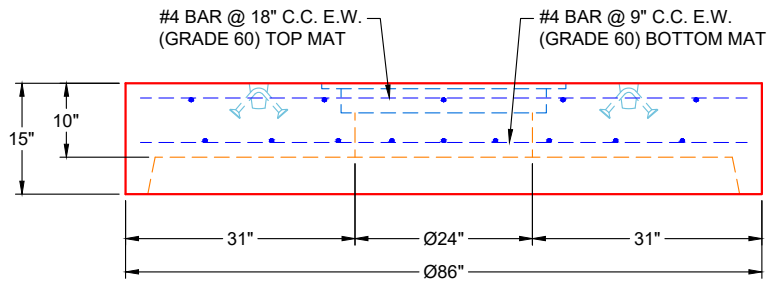
**PLAN VIEW**

2 EA. HOE MCS-288 FRAMES & COVERS LETTERED "SANITARY" SUPPLIED BY ICAST - FRAMES TO BE CAST INTO FLAT LID FLANGE SIDE UP

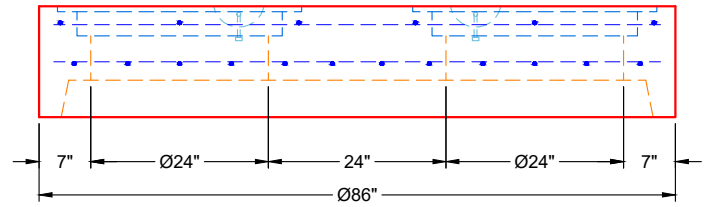
CONAC A-ANCHORS FOR PLANT & FIELD HANDLING

**GENERAL NOTES**

1. PER ASTM C-478 SPECIFICATIONS
2. CONCRETE: 5,000 PSI AT 28 DAYS
3. REINFORCEMENT:
  - TOP MAT: #4 BAR @ 18" C.C. E.W. (GRADE 60)
  - BOTTOM MAT: #4 BAR @ 9" C.C. E.W. (GRADE 60)
4. WEIGHT: 5,022 LBS
5. 2 EA. HOE MCS-288 FRAMES & COVERS LETTERED "SANITARY" SUPPLIED BY ICAST - FRAMES TO BE CAST INTO FLAT LID FLANGE SIDE UP



**FRONT VIEW**



**SIDE VIEW**

**REVISION INFORMATION**

REV.  DATE:	NO REVISIONS TO DATE



SUBMITTAL DRAWING: Ø72" MH 15" HT. FLAT LID SPECIAL		
CUSTOMER: WEDDLE ENTERPRISES, INC.		
PROJECT: EAST JESSAMINE MIDDLE SCHOOL PS		
STRUCTURE: ARV 19+97 REV - STA 19+97		
QUOTE/SALES ORDER NO: 24-2754		
CHECKED BY: B. SMITH	DRAWN BY: K. CARDWELL	
DATE: 01/02/26	SCALE: NTS	PG. 1 OF 1