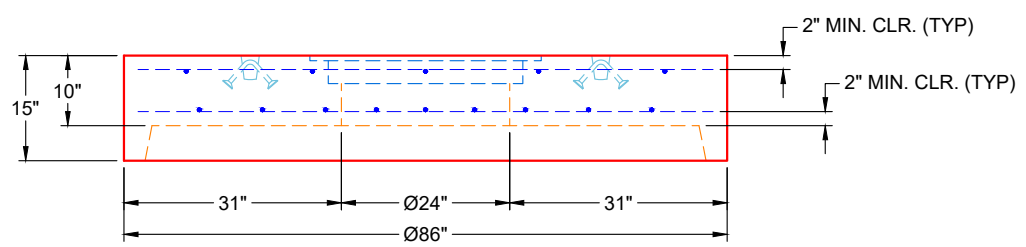


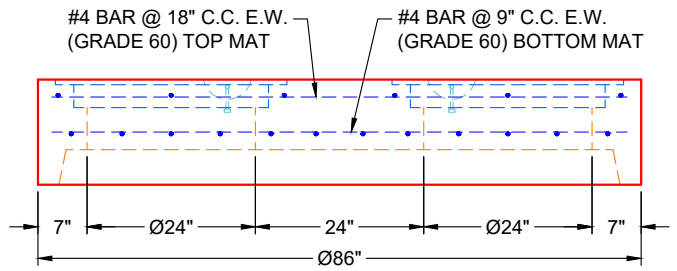
PLAN VIEW

GENERAL NOTES


1. PER ASTM C-478 SPECIFICATIONS
2. CONCRETE: 5,000 PSI AT 28 DAYS
3. REINFORCEMENT - 2" MIN. REBAR CLEARANCE (TYP):
 - TOP MAT: #4 BAR @ 18" C.C. E.W. (GRADE 60)
 - BOTTOM MAT: #4 BAR @ 9" C.C. E.W. (GRADE 60)
4. WEIGHT: 5,022 LBS
5. 2 EA. HOE MCS-288 FRAMES & COVERS LETTERED "SANITARY" SUPPLIED BY ICAST - FRAMES TO BE CAST INTO FLAT LID FLANGE SIDE UP
6. LIFTERS: 4 EA. 5CA14 CONAC A-ANCHORS FOR PLANT & FIELD HANDLING
7. TOP SURFACE TO RECEIVE LIGHT BRUSH FINISH



FRONT VIEW



SIDE VIEW

PRODUCTION WORK ORDER		PRODUCT I.D.: MH072LD15SP	DESCRIPTION: Ø72" MANHOLE 15" HEIGHT FLAT LID SPECIAL	
	QUALITY CONTROL CHECKLIST <input type="checkbox"/> ALL DIMENSIONS CORRECT. <input type="checkbox"/> LIFTERS INSTALLED. <input type="checkbox"/> HOLE LOCATION(S) CORRECT. <input type="checkbox"/> REINFORCING CORRECT. <input type="checkbox"/> SURFACE QUALITY ACCEPTABLE. <input type="checkbox"/> OUTSIDE TOP EDGE TROWELLED. <input type="checkbox"/> GROOVE JOINT INSTALLED.	PRODUCT VIEW: RIGHT SIDE UP	CUSTOMER: WEDDLE ENTERPRISES, INC.	
		PLANT: BEAVER DAM, KY	PROJECT: EAST JESSAMINE MIDDLE SCHOOL PS	
		WEIGHT: 5,022 LBS	STRUCTURE: ARV 19+97 REV - STA 19+97	
		TOP SECTION JOINT: N / A	ORDER NO: 24-2754	
		BASE SECTION JOINT: GROOVE	PE: J.H. ROSS	DRAWING: K. CARDWELL
QC CHECK INITIALS:	DATE: 01/02/26	SCALE: NTS	PG. 1 OF 1	

THIS DRAWING IS THE PROPERTY OF INFRASTRUCTURE PRECAST, INC. ANY USE OR DUPLICATION OF THIS DRAWING WITHOUT PRIOR AUTHORIZATION IS STRICTLY PROHIBITED.