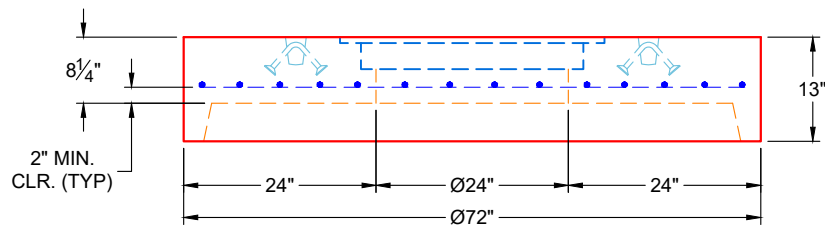
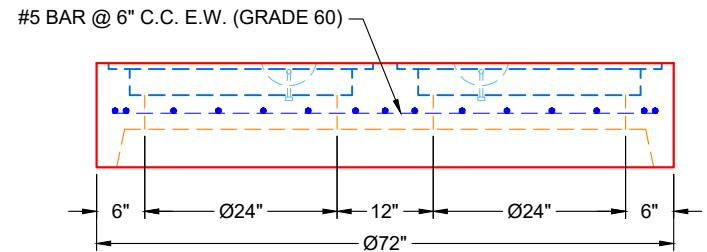


**PLAN VIEW**



**FRONT VIEW**



**SIDE VIEW**

**GENERAL NOTES**

1. PER ASTM C-478 SPECIFICATIONS
2. CONCRETE: 5,000 PSI AT 28 DAYS
3. REINFORCEMENT: #5 BAR @ 6" C.C. E.W. (GRADE 60) - 2" MIN. REBAR CLEARANCE (TYP)
4. WEIGHT: 2,760 LBS
5. 2 EA. HOE MCS-288 FRAMES & COVERS LETTERED "SANITARY" SUPPLIED BY ICAST
6. LIFTERS: 4 EA. 5CA14 CONAC A-ANCHORS FOR PLANT & FIELD HANDLING
7. TOP SURFACE TO RECEIVE LIGHT BRUSH FINISH

**PRODUCTION WORK ORDER**

PRODUCT I.D.: MH060LD13SP

DESCRIPTION: Ø60" MANHOLE 13" HEIGHT FLAT LID SPECIAL



**QUALITY CONTROL CHECKLIST**

- ALL DIMENSIONS CORRECT.
- LIFTERS INSTALLED.
- HOLE LOCATION(S) CORRECT.
- REINFORCING CORRECT.
- SURFACE QUALITY ACCEPTABLE.
- OUTSIDE TOP EDGE TROWELLED.
- GROOVE JOINT INSTALLED.

PRODUCT VIEW: RIGHT SIDE UP

CUSTOMER: WEDDLE ENTERPRISES, INC.

PLANT: BEAVER DAM, KY

PROJECT: EAST JESSAMINE MIDDLE SCHOOL PS

WEIGHT: 2,760 LBS

STRUCTURE: ARV 19+97 - STA 19+97

TOP SECTION JOINT: N / A

ORDER NO: 24-2754

BASE SECTION JOINT: GROOVE

PE: J.H. ROSS

DRAWING: K. CARDWELL

QC CHECK INITIALS:

DATE: 09/17/25

SCALE: NTS

PG. 1 OF 1