

Job Name: 24-2716D 905 E Trinity  
 Job Location: Nashville, TN  
 Contractor: Hayes Pipe Supply

Plant: Beaver Dam, KY  
 1/23/2026 11:01:16 AM

Tech: J. Coppage  
 PC: A. Chambers



**Structure ID: F3A**

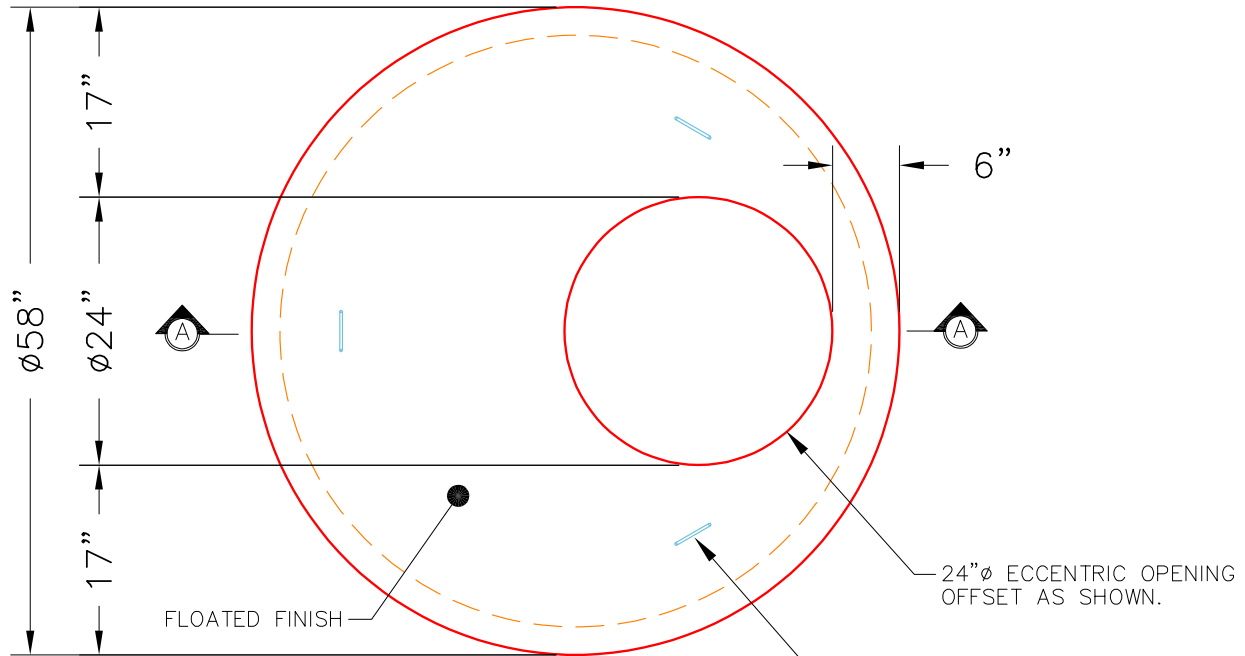
**P3 MH048LD12ECC**

**MH FLAT LID w/24in ECC Hole**

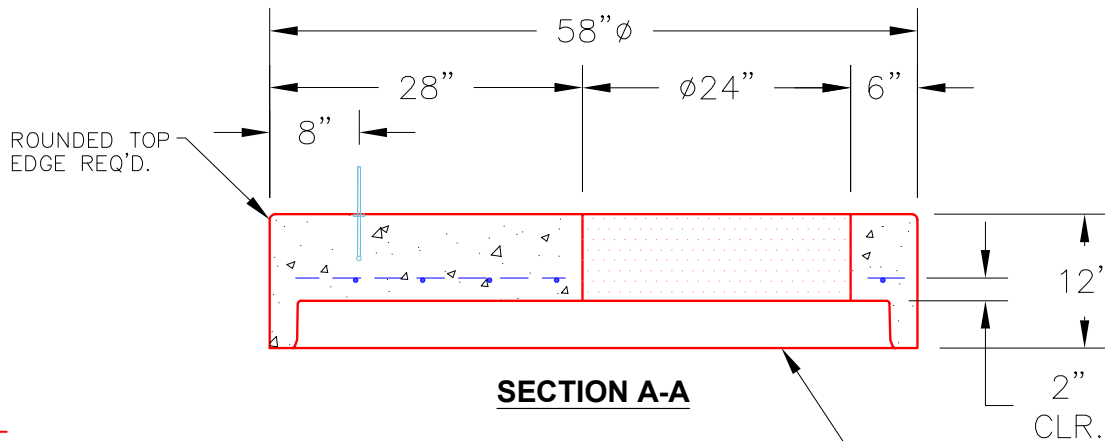
- P4) 24" - CASTING HEIGHT - 7"
- P3) 48" - MH FLAT LID w/24in ECC Hole - 12"
- P2) 48" - MH RISER - 42"
- P1) 48" - MH BASE Custom Ht - 34"
- 2) 48" - Conseal CS-102 1.00"
- 2) Hole - 26
- 7) MH Step ML-10-TDS-NCR - 10"

- Structure Notes:
1. PER ASTM C-478 SPECS
  2. CONCRETE: 4,000 PSI AT 28 DAYS
  3. REINFORCEMENT:
    - FLAT LID: #4 BAR @ 10" C.C. E.W. (GRADE 60)
    - BASE: PER ASTM A615
  4. STEPS AT 270 DEGREES
  5. CASTING: (JBS 1150 "STORM" SUPPLIED BY OTHERS)

	0 lb
	1561 lb
	2701 lb
	3472 lb
	0 lb
	0 lb
	0 lb
Structure Total:	7734 lb



**PLAN VIEW**



**SECTION A-A**

**NOTES:**

1. MANUFACTURED TO ASTM C-478 (LATEST REVISION).
2. CONCRETE: 5,000 PSI AT 28 DAYS.
3. REINFORCING: #4 BAR @ 10" O.C. E.W. (GRADE 60).

STANDARD SINGLE OFFSET GROOVE JOINT REQUIRED

Coating (Int): Coating (Ext):	Seam Up: Flat Seam Dn: Groove	Wall Thickness: 5"	Height (Ext): 12"	Weight (Net): 1561 lb Volume (Net): 0.4cu.yd
----------------------------------	----------------------------------	--------------------	-------------------	---