

Job Name: 24-2716 905 E Trinity
Job Location: Nashville, TN
Contractor: Hayes Pipe Supply

PC: A. Chambers
 TECH: K. Cardwell
 Plant: Beaver Dam, KY



Structure ID: F5
 Spec: Storm
 Type: STM.MH
 Size: 48"

Rim: 565.4'
 Invert: 556.69'
 Rim to Invert: 8.71'

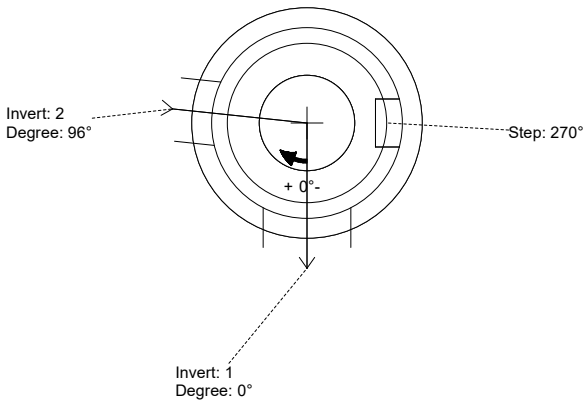
Sump: 2.25"
 Floor (Top): 556.503'
 Floor Height: 6"

Floor (Bot): 556.003'
 Overall Height: 9.333'
 Slack: 0.77"

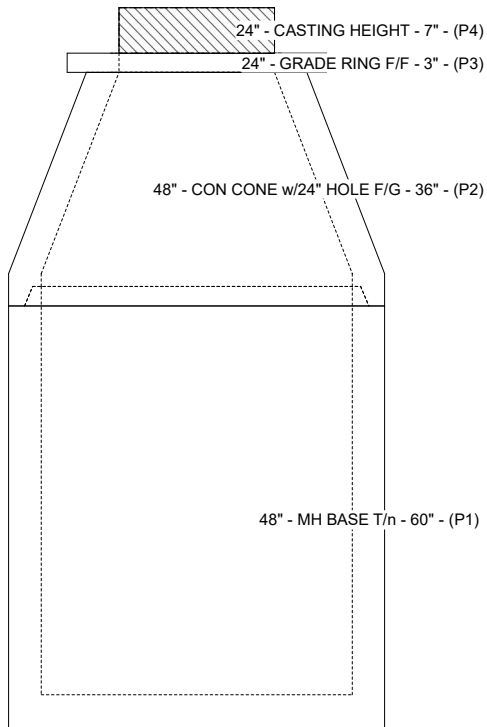
- Structure Notes:**
1. PER ASTM C-478 SPECS
 2. CONCRETE: 4,000 PSI AT 28 DAYS
 3. REINFORCEMENT: PER ASTM A615
 4. STEPS AT 270 DEGREES
 5. CASTING: JBS 1150 "STORM" SUPPLIED BY OTHERS

STRUCTURE SUMMARY:

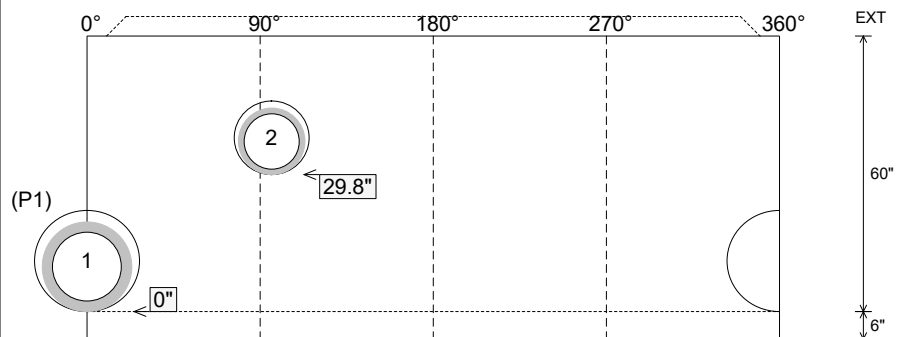
P4) 24" - CASTING HEIGHT - 7"	0 lb
P3) 24" - GRADE RING F/F - 3"	202 lb
P2) 48" - CON CONE w/24" HOLE F/G - 36"	2252 lb
P1) 48" - MH BASE T/n - 60"	5271 lb
1) 48" - Conseal CS-102 1.00"	0 lb
1) Hole - 22	0 lb
1) Hole - 16	0 lb
8) MH Step ML-10-TDS-NCR - 10"	0 lb
Structure Total:	7726 lb



Position	Elev	Angle	Pipe	Pipe OD	Hole	Connector	Up (")	Ref
Rim	565.4'							
Reducer								
Invert 1	556.69'	0°	15" RCP B WALL	19.5"	22"	Hole 22	0"	P1
Invert 2	559.09'	96°	12" HDPE	14.5"	16"	Hole 16	29.8"	P1
Invert 3								
Invert 4								
Invert 5								
Invert 6								
Invert 7								
Invert 8								



Cast (Int. Dim.) - Interior Dimensions



Submittal Drawing
 10/13/2025 3:52:55 PM

SUBMITTAL
 APPROVED BY: