

Job Name: 24-2716 905 E Trinity
 Job Location: Nashville, TN
 Contractor: Hayes Pipe Supply

Plant: Beaver Dam, KY
 10/14/2025 9:36:07 AM

Tech: K. Cardwell
 PC: A. Chambers



Structure ID: F4

P3 MH048LD12ECC

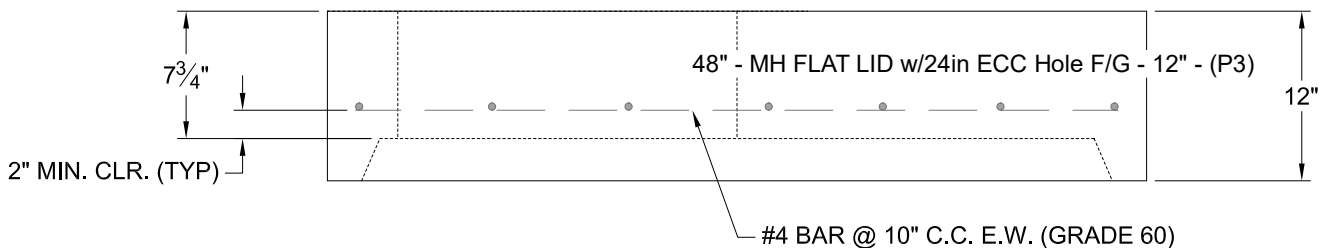
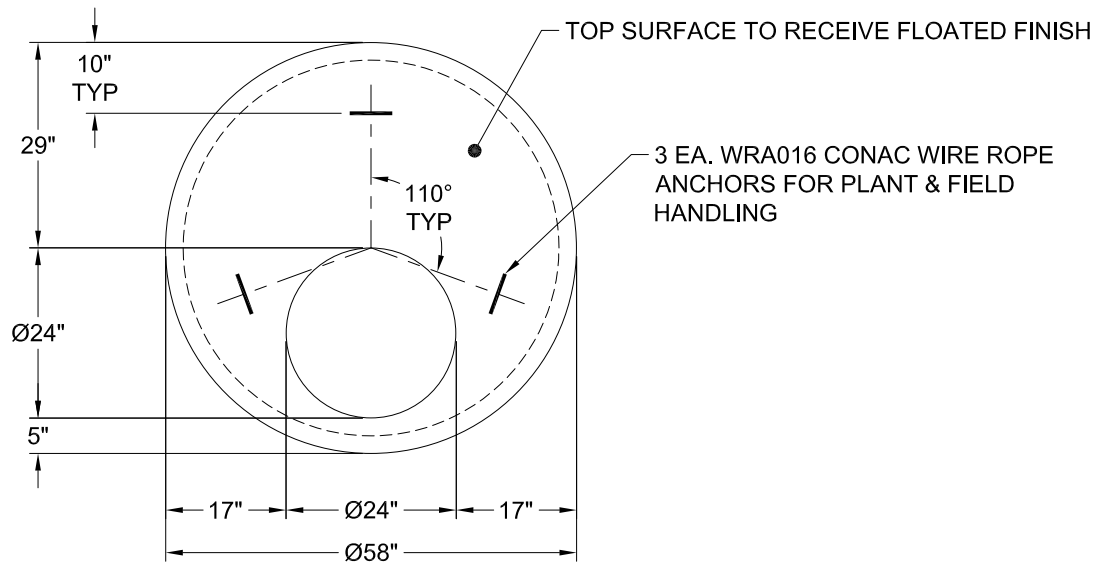
MH FLAT LID w/24in ECC Hole F/G

- P4) 24" - CASTING HEIGHT - 7"
- P3) 48" - MH FLAT LID w/24in ECC Hole F/G - 12"
- P2) 48" - MH RISER T/G - 48"
- P1) 48" - MH BASE T/n - 60"
- 2) 48" - Conseal CS-102 1.00"
- 1) Hole - 26
- 1) Hole - 22
- 9) MH Step ML-10-TDS-NCR - 10"

0 lb
 1561 lb
 3189 lb
 5289 lb
 0 lb
 0 lb
 0 lb
 0 lb

 Structure Total: 10038 lb

- Structure Notes:**
1. PER ASTM C-478 SPECS
 2. CONCRETE: 4,000 PSI AT 28 DAYS
 3. REINFORCEMENT: #4 BAR @ 10" C.C. E.W. (GRADE 60) - 2" MIN. REBAR CLEARANCE (TYP)
 4. STEPS AT 90 DEGREES
 5. CASTING: JBS 1150 "STORM" SUPPLIED BY OTHERS
 6. LIFTERS: 3 EA. WRA016 CONAC WIRE ROPE ANCHORS FOR PLANT & FIELD HANDLING



| | | | | |
|----------------------------------|----------------------------------|--------------------|-------------------|---|
| Coating (Int): Coating (Ext): | Seam Up: Flat Seam Dn: Groove | Wall Thickness: 5" | Height (Ext): 12" | Weight (Net): 1561 lb Volume (Net): 0.4cu.yd |
|----------------------------------|----------------------------------|--------------------|-------------------|---|