

Job Name: 24-2716 905 E Trinity  
 Job Location: Nashville, TN  
 Contractor: Hayes Pipe Supply

Plant: Beaver Dam, KY  
 10/17/2025 1:13:39 PM

Tech: K. Cardwell  
 PC: A. Chambers



**Structure ID: E2**

**P1 BX2864-06BA24**

**BOX BASE 6inW, 6inF F/n**

- P2) 28" x 64" - CASTING HEIGHT - 7.50"
- P1) 28" x 64" - BOX BASE 6inW, 6inF F/n - 24"
- 1) 28" x 64" - Conseal CS-102 1.00"
- 1) Hole - 20
- 1) Hole - 16
- 2) LINTEL BAR SLOT n/n - 7"x1"

0 lb  
 3771 lb  
 0 lb  
 0 lb  
 0 lb  
 0 lb  
 0 lb  
 -----  
 Structure Total: 3771 lb

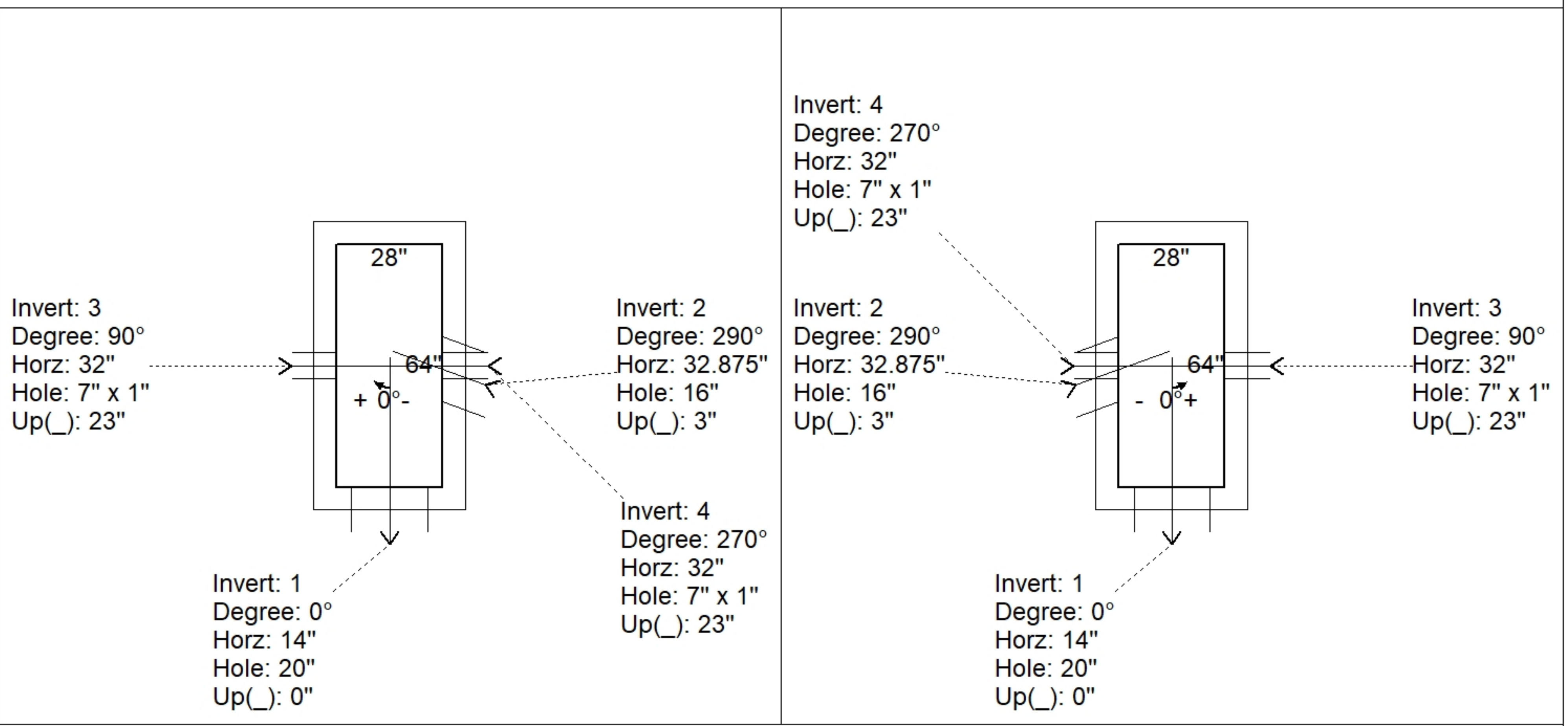
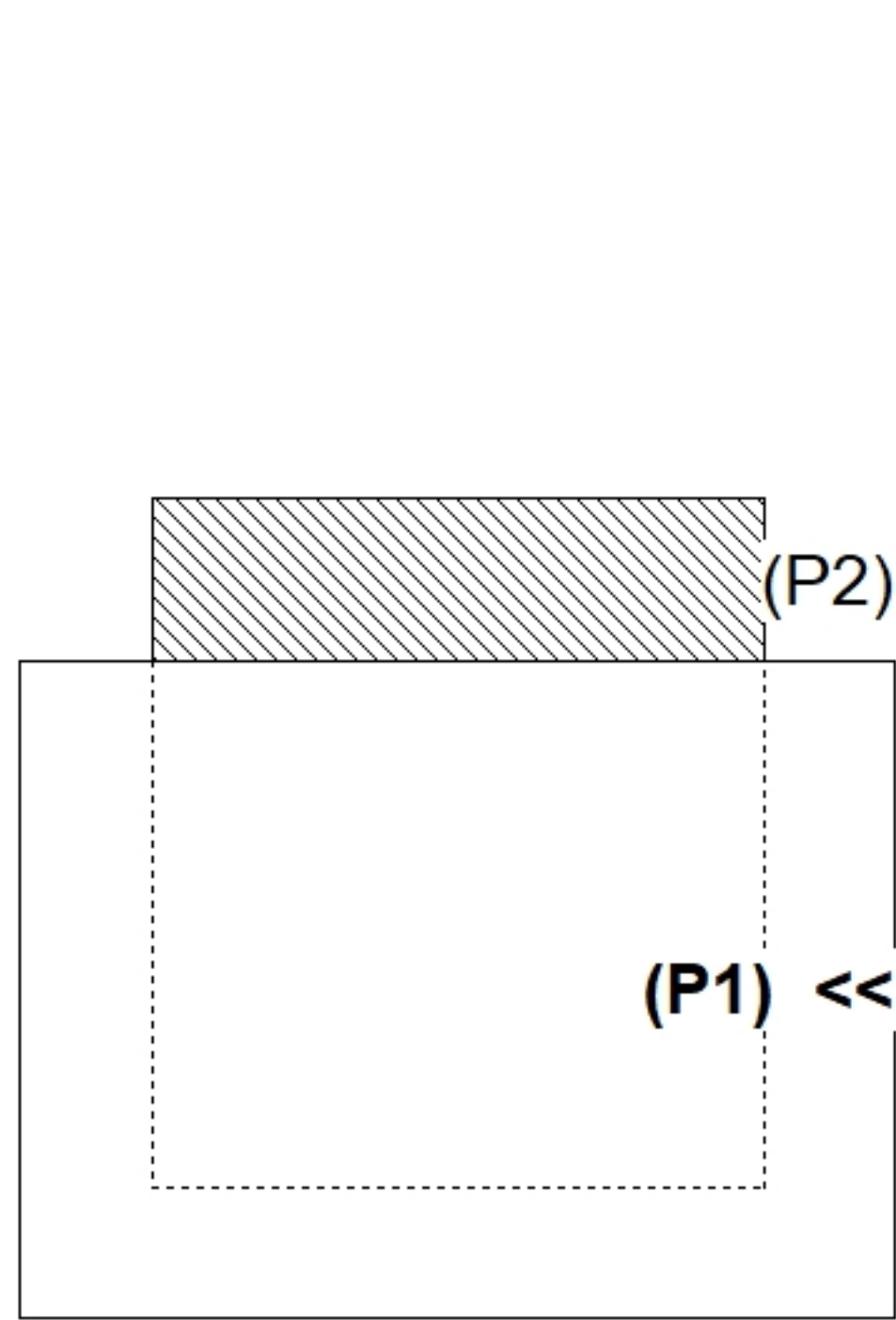
**Structure Notes:**  
 1. PER ASTM C-913 SPECS  
 2. CONCRETE: 4,000 PSI AT 28 DAYS  
 3. REINFORCEMENT: #4 BAR @ 12" C.C. E.W. (GRADE 60)  
 4. CASTING: 2 EA. JBS 3300-V SUPPLIED BY OTHERS  
 5. LINTEL BARS SLOTS CENTERED IN EACH LONG WALL  
 REQUIRED (7" LONG X 1" DEEP X FULL WIDTH OF WALL)

Rim: 534.5' Rim to Invert: 2.53' Slack: 0.16" Sump: 1.3" Step Position:

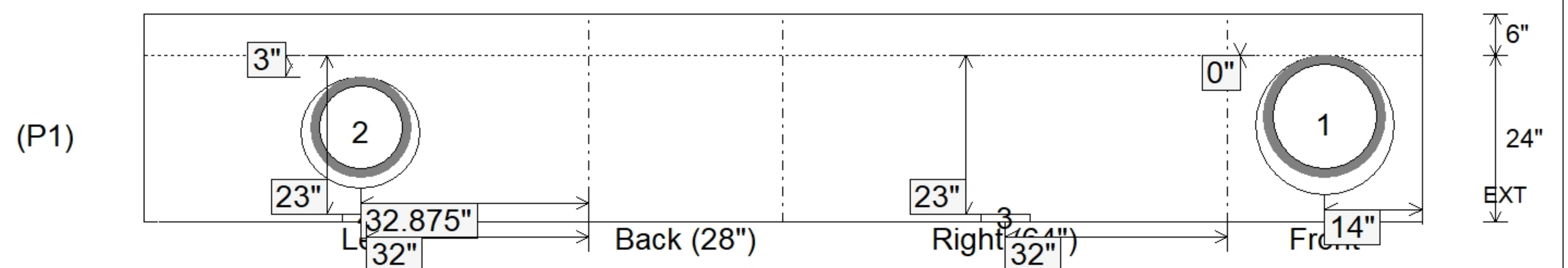
Position	Elev	Angle	Ext. (cw)	Pipe	Pipe OD	Connector	Hole	Horz Size	Up ( )	Offset
Invert 1	531.97'	0°	20"	15" HDPE	17.6"	Hole 20	20"	20"	0"	0"
Invert 2	532.22'	290°	41"	12" HDPE	14.5"	Hole 16	16"	17.027"	3"	-4"
Invert 3	533.775'	90°	38"	7" x 1" LINTEL BAR SLOT	7" x 1"	LINTEL BAR SLOT 7"x1"	7" x 1"	7"	23"	0"
Invert 4	533.775'	270°	38"	7" x 1" LINTEL BAR SLOT	7" x 1"	LINTEL BAR SLOT 7"x1"	7" x 1"	7"	23"	0"
Invert 5										
Invert 6										
Invert 7										
Invert 8										

RIGHT-SIDE UP VIEW (int. dimensions)

UPSIDE-DOWN VIEW (int. dimensions)



INSIDE WALL DIMENSIONS



Coating (Int):  
 Coating (Ext):

Seam Up: Flat  
 Seam Dn: n/a

Wall Thickness: 6"  
 Floor Height: 6"

Height (Int): 24"  
 Height (Ext): 30"

Weight (Net): 3771 lb  
 Volume (Net): 0.96cu.yd