

Job Name: 24-2716 905 E Trinity  
 Job Location: Nashville, TN  
 Contractor: Hayes Pipe Supply

Plant: Beaver Dam, KY  
 10/14/2025 9:36:05 AM

Tech: K. Cardwell  
 PC: A. Chambers



**Structure ID: C2A**

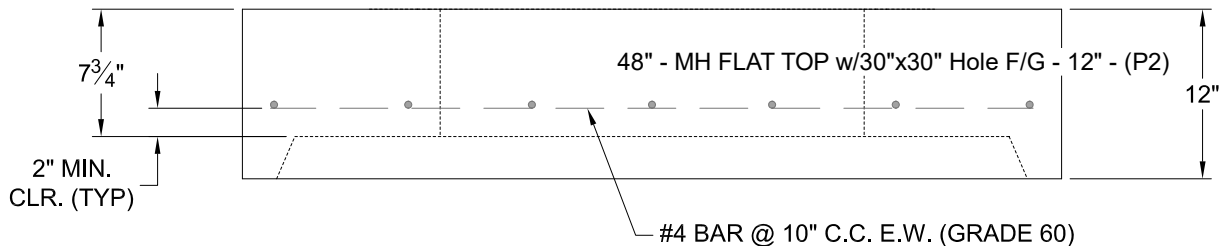
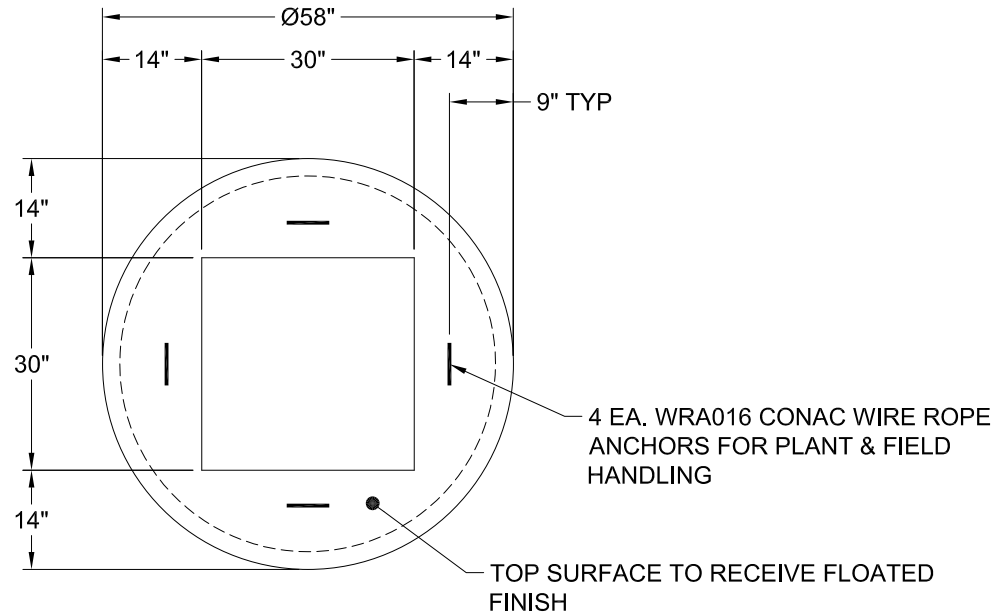
**P2 MH048LD12S**

**MH FLAT TOP w/30"x30" Hole F/G**

- P4) 30" x 30" - CASTING HEIGHT - 6"
- P3) 30" x 30" - GRADE RING F/F - 3"
- P2) 48" - MH FLAT TOP w/30"x30" Hole F/G - 12"
- P1) 48" - MH BASE T/n - 60"
- 1) 48" - Conseal CS-102 1.00"
- 2) 30" x 30" - Conseal CS-102 1.00"
- 1) Hole - 20
- 5) MH Step ML-10-TDS-NCR - 10"

	0 lb
	218 lb
	1350 lb
	5386 lb
	0 lb
	0 lb
	0 lb
	0 lb
	0 lb
Structure Total:	6954 lb

- Structure Notes:**
1. PER ASTM C-478 SPECS
  2. CONCRETE: 4,000 PSI AT 28 DAYS
  3. REINFORCEMENT: PER ASTM A615
  4. STEPS AT 90 DEGREES
  5. CASTING: JBS 4310 SUPPLIED BY OTHERS
  6. LIFTERS: 4 EA. WRA016 CONAC WIRE ROPE ANCHORS FOR PLANT & FIELD HANDLING



Coating (Int): Coating (Ext):	Seam Up: Flat Seam Dn: Groove	Wall Thickness: 5"	Height (Ext): 12"	Weight (Net): 1350 lb Volume (Net): 0.33cu.yd
----------------------------------	----------------------------------	--------------------	-------------------	--------------------------------------------------