

Structure ID: C2

P2 BX2864-06R36

BOX RISER 6inW F/G

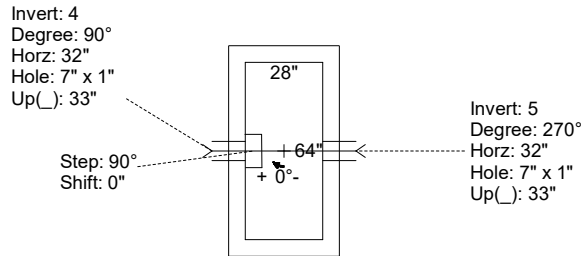
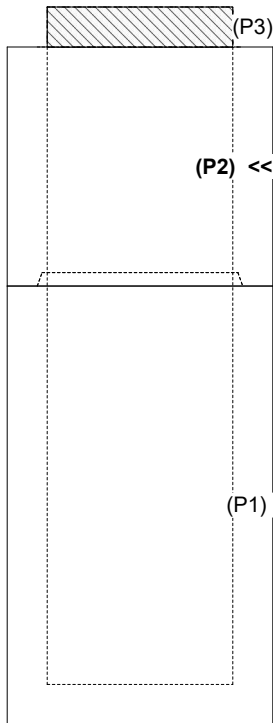
P3) 28" x 64" - CASTING HEIGHT - 6" P2) 28" x 64" - BOX RISER 6inW F/G - 36" P1) 28" x 64" - BOX BASE 6inW, 6inF T/n - 60" 2) 28" x 64" - Conseal CS-102 1.00" 2) Hole - 20 1) Hole - 14 2) LINTEL BAR SLOT n/n - 7"x1" 8) MH Step ML-10-TDS-NCR - 10"	0 lb 3763 lb 7372 lb 0 lb 0 lb 0 lb 0 lb 0 lb 0 lb ----- 11135 lb	Structure Notes: 1. PER ASTM C-913 SPECS 2. CONCRETE: 4,000 PSI AT 28 DAYS 3. REINFORCEMENT: #4 BAR @ 12" C.C. E.W. (GRADE 60) - 2" MIN. REBAR CLEARANCE (TYP) 4. CASTING: 2 EA. JBS 4310 SUPPLIED BY OTHERS 5. LINTEL BARS SLOTS CENTERED IN EACH LONG WALL REQUIRED (7" LONG X 1" DEEP X FULL WIDTH OF WALL)
---	---	--

Structure Total: 11135 lb

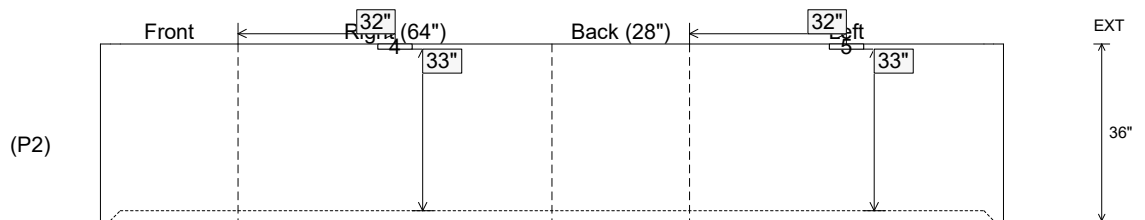
Rim: 560.44' Rim to Invert: 8.44' Slack: 0.58" Sump: 1.3" Step Position: 90°

Position	Elev	Angle	Ext. (cw)	Pipe	Pipe OD	Connector	Hole	Horz Size	Up ()	Offset
Invert 1										
Invert 2										
Invert 3										
Invert 4	559.805'	90°	38"	7" x 1" LINTEL BAR SLOT	7" x 1"	LINTEL BAR SLOT 7"x1"	7" x 1"	7"	33"	0"
Invert 5	559.805'	270°	38"	7" x 1" LINTEL BAR SLOT	7" x 1"	LINTEL BAR SLOT 7"x1"	7" x 1"	7"	33"	0"
Invert 6										
Invert 7										
Invert 8										

RIGHT-SIDE UP VIEW (int. dimensions)



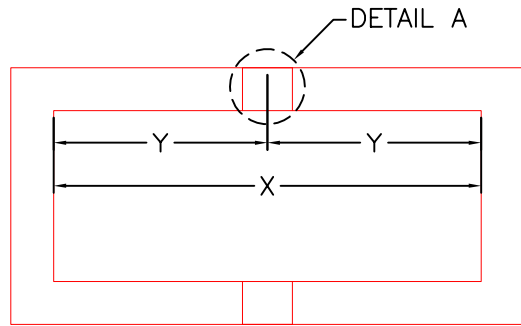
INSIDE WALL DIMENSIONS



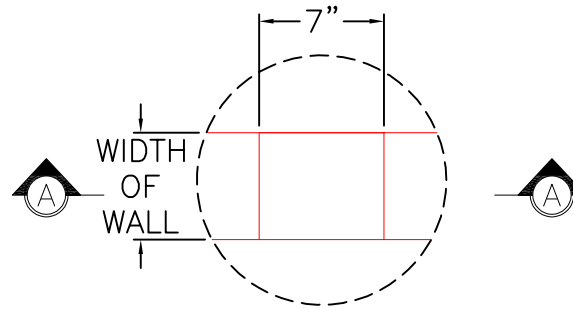
Coating (Int): Coating (Ext):	Seam Up: Flat Seam Dn: Groove	Wall Thickness: 6" Floor Height: 0"	Height (Int): 36" Height (Ext): 36"	Weight (Net): 3763 lb Volume (Net): 0.96cu.yd
----------------------------------	----------------------------------	--	--	--

GENERAL NOTES:

- RECESSES FOR LINTEL BARS TO BE 7" LONG X 1" DEEP X FULL WIDTH OF WALL.

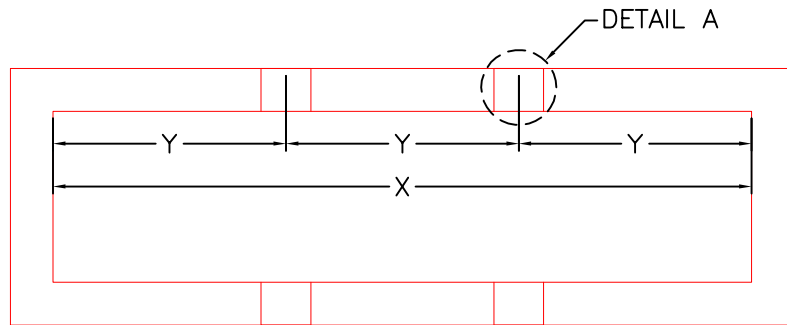


PLAN VIEW
DOUBLE INLET

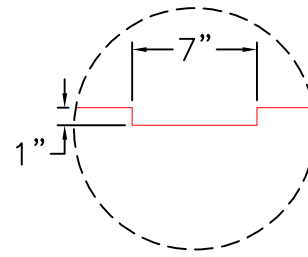


DETAIL A

X	Y
54"	27"
56"	28"
60"	30"
64"	32"
72"	36"



PLAN VIEW
TRIPLE INLET



SECTION A-A

X	Y
96"	32"
98"	32 ³ / ₄ "
108"	36"

PRODUCTION WORK ORDER

PRODUCT I.D.: -

DESCRIPTION: LINTEL BAR POCKET LOCATIONS



QUALITY CONTROL CHECKLIST

- ALL DIMENSIONS CORRECT.
- LIFTERS INSTALLED.
- OPENING CENTERED.
- REINFORCING CORRECT.
- SURFACE QUALITY ACCEPTABLE.
- EDGES CHAMFERED.
- ALL PATCHWORK ACCEPTABLE.

PRODUCT VIEW: RIGHT SIDE UP

CUSTOMER: N/A

PLANT: BEAVER DAM, KY.

PROJECT: N/A

WEIGHT: N/A.

STRUCTURE: N/A

TOP SECTION JOINT: N/A

ORDER NO: N/A

BASE SECTION JOINT: N/A

PE: J.H. ROSS

DRAWING: J. COPPAGE

QC CHECK INITIALS:

DATE: 3/6/24

SCALE: NTS

PG. 1 of 1