

**Job Name: 24-2716 905 E Trinity**  
**Job Location: Nashville, TN**  
**Contractor: Hayes Pipe Supply**

PC: A. Chambers  
 TECH: K. Cardwell  
 Plant: Beaver Dam, KY



Structure ID: C1  
 Spec: Storm  
 Type: STM.MH  
 Size: 48"

Rim: 559.46'  
 Invert: 551.08'  
 Rim to Invert: 8.38'

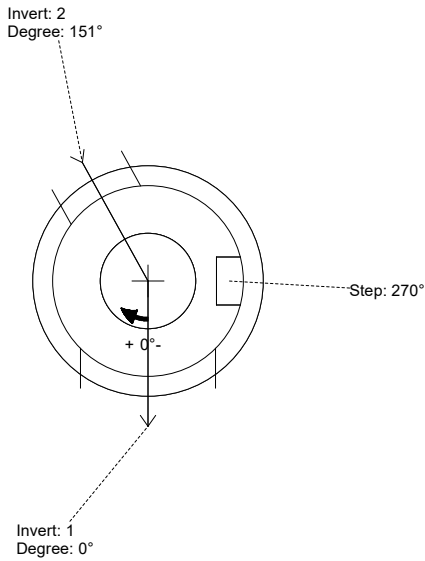
Sump: 3"  
 Floor (Top): 550.83'  
 Floor Height: 6"

Floor (Bot): 550.33'  
 Overall Height: 9.083'  
 Slack: 0.56"

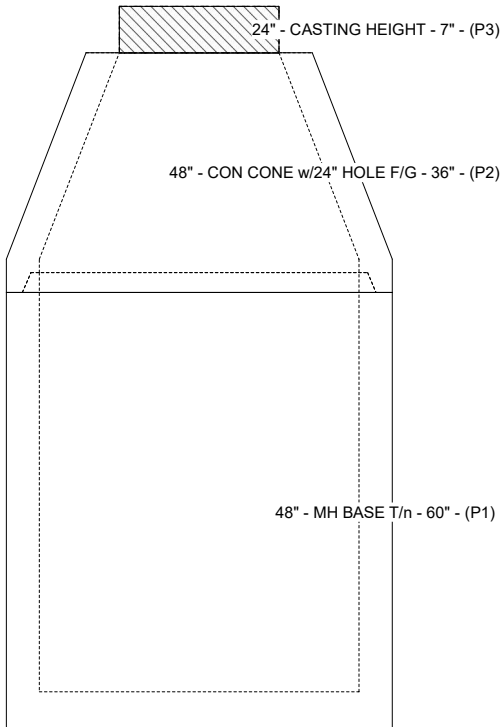
- Structure Notes:**
1. PER ASTM C-478 SPECS
  2. CONCRETE: 4,000 PSI AT 28 DAYS
  3. REINFORCEMENT: PER ASTM A615
  4. STEPS AT 270 DEGREES
  5. CASTING: JBS 1150 "STORM" SUPPLIED BY OTHERS

**STRUCTURE SUMMARY:**

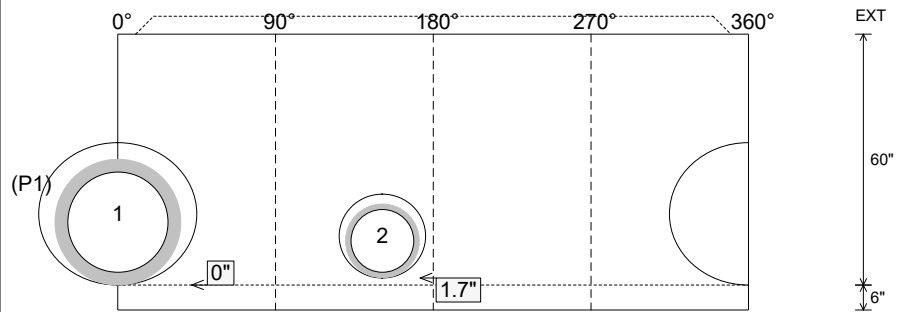
P3) 24" - CASTING HEIGHT - 7"	0 lb
P2) 48" - CON CONE w/24" HOLE F/G - 36"	2252 lb
P1) 48" - MH BASE T/n - 60"	4971 lb
1) 48" - Conseal CS-102 1.00"	0 lb
1) Hole - 34	0 lb
1) Hole - 20	0 lb
8) MH Step ML-10-TDS-NCR - 10"	0 lb
<b>Structure Total:</b>	<b>7224 lb</b>



Position	Elev	Angle	Pipe	Pipe OD	Hole	Connector	Up (")	Ref
Rim	559.46'							
Reducer								
Invert 1	551.08'	0°	24" RCP B WALL	30"	34"	Hole 34	0"	P1
Invert 2	551.08'	151°	15" HDPE	17.6"	20"	Hole 20	1.7"	P1
Invert 3								
Invert 4								
Invert 5								
Invert 6								
Invert 7								
Invert 8								



**Cast (Int. Dim.) - Interior Dimensions**



Submittal Drawing  
 10/13/2025 3:52:48 PM

SUBMITTAL  
 APPROVED BY: