

Job Name: 24-2716 905 E Trinity
Job Location: Nashville, TN
Contractor: Hayes Pipe Supply

PC: A. Chambers
 TECH: K. Cardwell
 Plant: Beaver Dam, KY



Structure ID: **B3**
 Spec: Storm
 Type: STM.MH
 Size: 48"

Rim: 559.55'
 Invert: 551.23'
 Rim to Invert: 8.32'

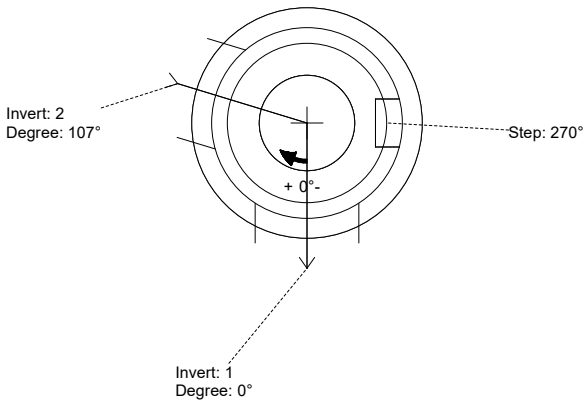
Sump: 2.5"
 Floor (Top): 551.022'
 Floor Height: 6"

Floor (Bot): 550.522'
 Overall Height: 8.917'
 Slack: 1.34"

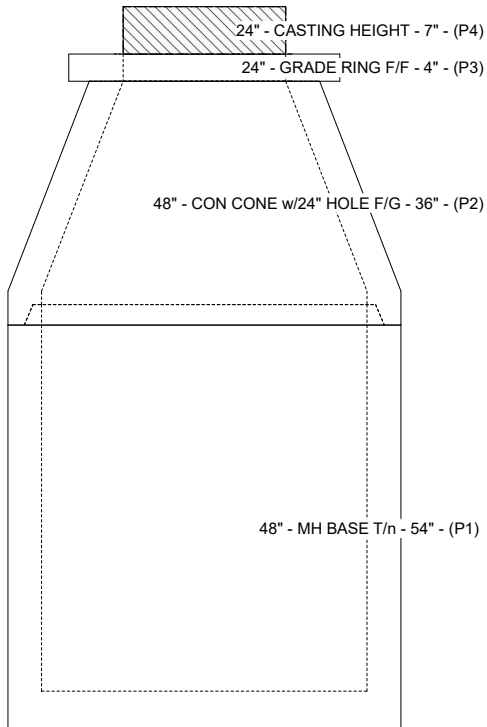
- Structure Notes:**
1. PER ASTM C-478 SPECS
 2. CONCRETE: 4,000 PSI AT 28 DAYS
 3. REINFORCEMENT: PER ASTM A615
 4. STEPS AT 270 DEGREES
 5. CASTING: JBS 1150 "STORM" SUPPLIED BY OTHERS

STRUCTURE SUMMARY:

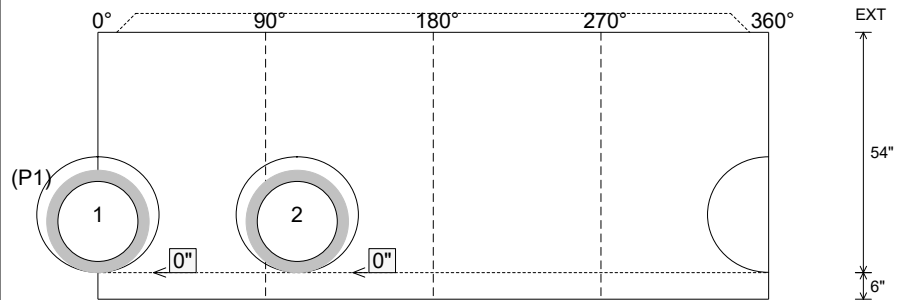
- P4) 24" - CASTING HEIGHT - 7" 0 lb
 - P3) 24" - GRADE RING F/F - 4" 270 lb
 - P2) 48" - CON CONE w/24" HOLE F/G - 36" 2252 lb
 - P1) 48" - MH BASE T/n - 54" 4636 lb
 - 1) 48" - Conseal CS-102 1.00" 0 lb
 - 2) Hole - 26 0 lb
 - 7) MH Step ML-10-TDS-NCR - 10" 0 lb
- Structure Total: 7158 lb



Position	Elev	Angle	Pipe	Pipe OD	Hole	Connector	Up ()	Ref
Rim	559.55'							
Reducer								
Invert 1	551.23'	0°	18" RCP B WALL	23"	26"	Hole 26	0"	P1
Invert 2	551.23'	107°	18" RCP B WALL	23"	26"	Hole 26	0"	P1
Invert 3								
Invert 4								
Invert 5								
Invert 6								
Invert 7								
Invert 8								



Cast (Int. Dim.) - Interior Dimensions



Submittal Drawing
 10/13/2025 3:52:46 PM

SUBMITTAL
 APPROVED BY: