

Job Name: 24-2716 905 E Trinity
Job Location: Nashville, TN
Contractor: Hayes Pipe Supply

PC: A. Chambers
 TECH: K. Cardwell
 Plant: Beaver Dam, KY



Structure ID: **B1**
 Spec: Storm
 Type: STM.MH
 Size: 48"

Rim: 554.81'
 Invert: 544'
 Rim to Invert: 10.81'

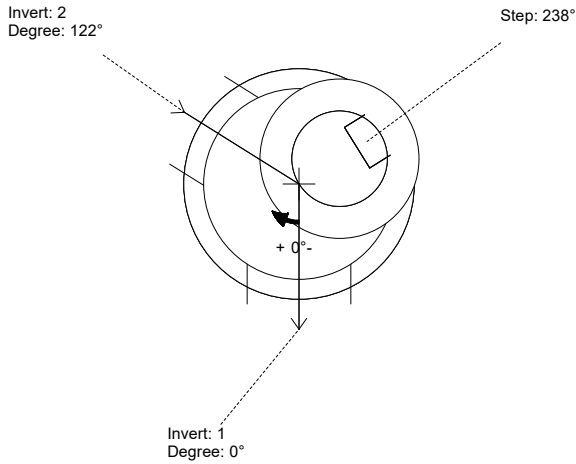
Sump: 2.5"
 Floor (Top): 543.792'
 Floor Height: 6"

Floor (Bot): 543.292'
 Overall Height: 11.417'
 Slack: 1.22"

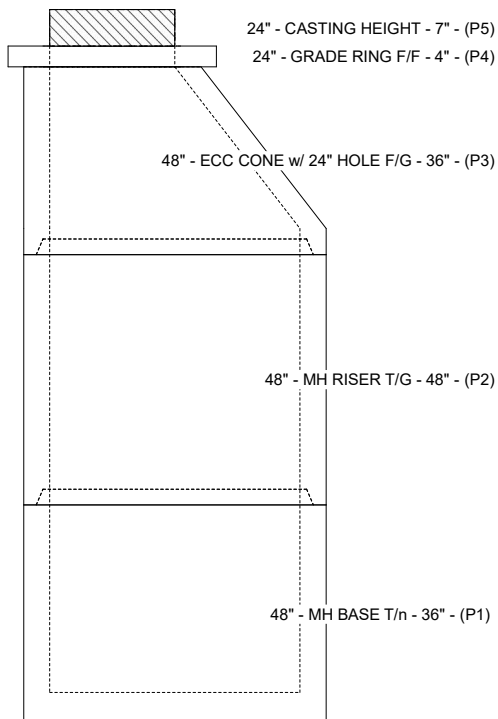
- Structure Notes:**
1. PER ASTM C-478 SPECS
 2. CONCRETE: 4,000 PSI AT 28 DAYS
 3. REINFORCEMENT: PER ASTM A615
 4. STEPS AT 238 DEGREES
 5. CASTING: JBS 1150 "STORM" SUPPLIED BY OTHERS

STRUCTURE SUMMARY:

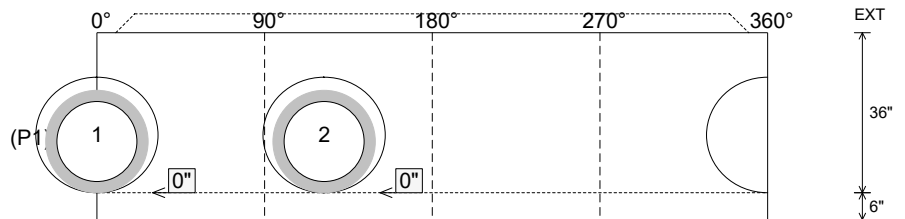
P5) 24" - CASTING HEIGHT - 7"	0 lb
P4) 24" - GRADE RING F/F - 4"	270 lb
P3) 48" - ECC CONE w/ 24" HOLE F/G - 36"	3000 lb
P2) 48" - MH RISER T/G - 48"	3353 lb
P1) 48" - MH BASE T/n - 36"	3379 lb
2) 48" - Conseal CS-102 1.00"	0 lb
2) Hole - 26	0 lb
10) MH Step ML-10-TDS-NCR - 10"	0 lb
Structure Total:	10002 lb



Position	Elev	Angle	Pipe	Pipe OD	Hole	Connector	Up (↓)	Ref
Rim	554.81'							
Reducer								
Invert 1	544'	0°	18" RCP B WALL	23"	26"	Hole 26	0"	P1
Invert 2	544'	122°	18" RCP B WALL	23"	26"	Hole 26	0"	P1
Invert 3								
Invert 4								
Invert 5								
Invert 6								
Invert 7								
Invert 8								



Cast (Int. Dim.) - Interior Dimensions



Submittal Drawing
 10/13/2025 3:52:45 PM

SUBMITTAL
 APPROVED BY: