

Job Name: 24-2716 905 E Trinity
Job Location: Nashville, TN
Contractor: Hayes Pipe Supply

PC: A. Chambers
 TECH: K. Cardwell
 Plant: Beaver Dam, KY



Structure ID: **A6**
 Spec: Storm
 Type: STM.MH
 Size: 72"

Rim: 540.59'
 Invert: 530.82'
 Rim to Invert: 9.77'

Sump: 4.5"
 Floor (Top): 530.445'
 Floor Height: 8"

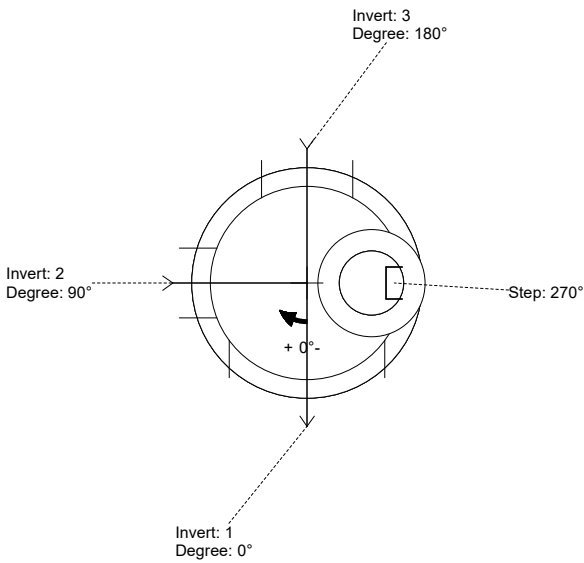
Floor (Bot): 529.778'
 Overall Height: 10.75'
 Slack: 0.74"

Structure Notes:

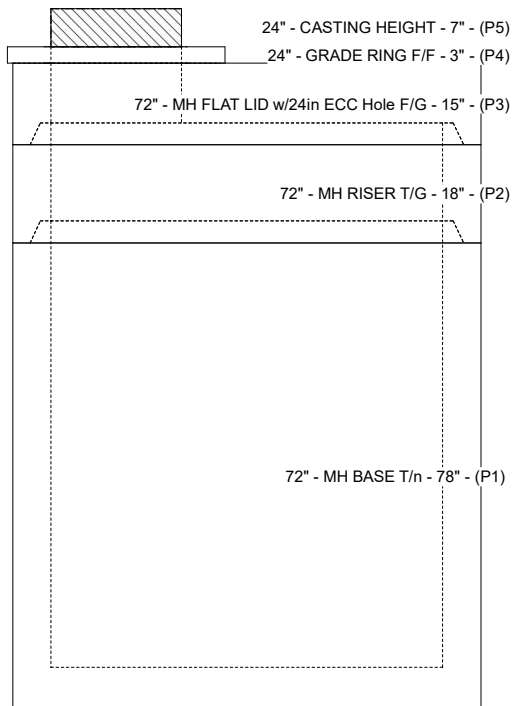
- PER ASTM C-478 SPECS
- CONCRETE: 4,000 PSI AT 28 DAYS
- REINFORCEMENT:
 - FLAT LID TOP MAT: #4 BAR @ 18" C.C. E.W. (GRADE 60)
 - FLAT LID BOTTOM MAT: #4 BAR @ 9" C.C. E.W. (GRADE 60)
 - BASE: PER ASTM A615
- STEPS AT 270 DEGREES
- CASTING: JBS 1150 "STORM" SUPPLIED BY OTHERS

STRUCTURE SUMMARY:

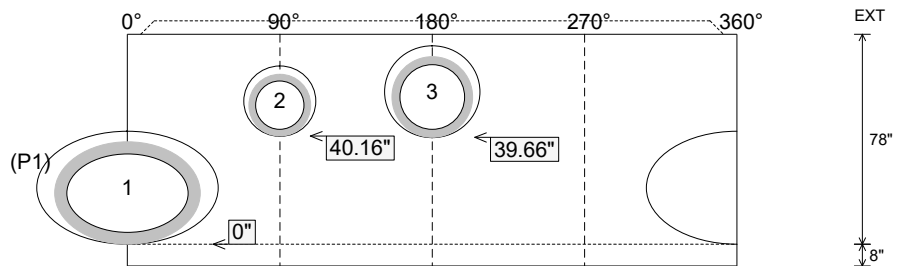
P5) 24" - CASTING HEIGHT - 7"	0 lb
P4) 24" - GRADE RING F/F - 3"	202 lb
P3) 72" - MH FLAT LID w/24in ECC Hole F/G - 15"	5098 lb
P2) 72" - MH RISER T/G - 18"	2624 lb
P1) 72" - MH BASE T/n - 78"	13131 lb
2) 72" - Conseal CS-102 1.00"	0 lb
1) Hole - 58 x 42	0 lb
1) Hole - 26	0 lb
1) Hole - 34	0 lb
8) MH Step ML-10-TDS-NCR - 10"	0 lb
Structure Total:	21055 lb



Position	Elev	Angle	Pipe	Pipe OD	Hole	Connector	Up ()	Ref
Rim	540.59'							
Reducer								
Invert 1	530.82'	0°	45" x 29" ELL RCP	54" x 38"	58" x 42"	Hole 58 x 42	0"	P1
Invert 2	534'	90°	18" RCP B WALL	23"	26"	Hole 26	40.16"	P1
Invert 3	534'	180°	24" RCP B WALL	30"	34"	Hole 34	39.66"	P1
Invert 4								
Invert 5								
Invert 6								
Invert 7								
Invert 8								



Cast (Int. Dim.) - Interior Dimensions



Submittal Drawing
 10/13/2025 3:52:44 PM

SUBMITTAL
 APPROVED BY: