

Job Name: 24-2716 905 E Trinity
 Job Location: Nashville, TN
 Contractor: Hayes Pipe Supply

Plant: Beaver Dam, KY
 10/14/2025 9:36:00 AM

Tech: K. Cardwell
 PC: A. Chambers



Structure ID: A6

P3 MH072LD15-24ECC

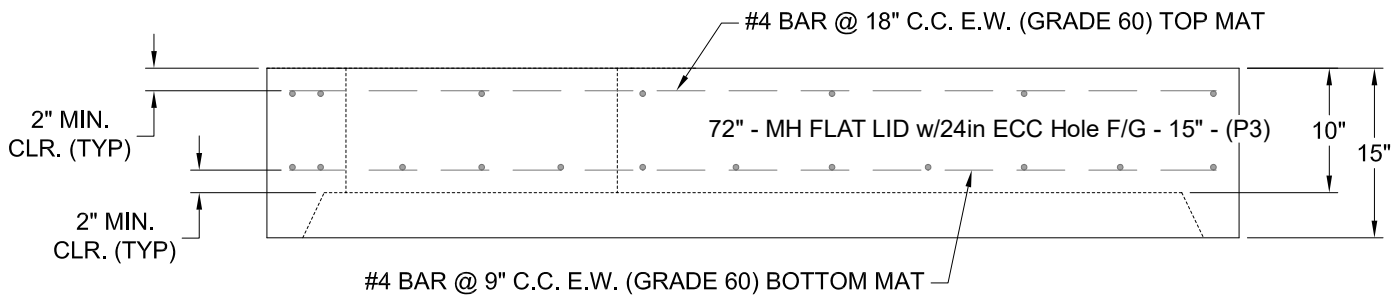
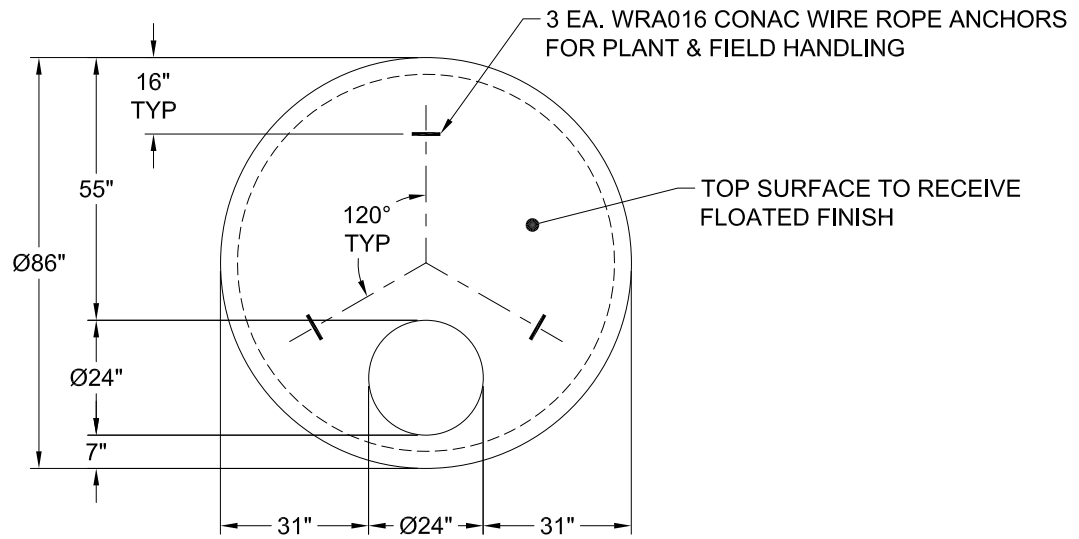
MH FLAT LID w/24in ECC Hole F/G

- P5) 24" - CASTING HEIGHT - 7"
- P4) 24" - GRADE RING F/F - 3"
- P3) 72" - MH FLAT LID w/24in ECC Hole F/G - 15"
- P2) 72" - MH RISER T/G - 18"
- P1) 72" - MH BASE T/n - 78"
- 2) 72" - Conseal CS-102 1.00"
- 1) Hole - 58 x 42
- 1) Hole - 26
- 1) Hole - 34
- 8) MH Step ML-10-TDS-NCR - 10"

0 lb
 202 lb
 5098 lb
 2624 lb
 13131 lb
 0 lb
 0 lb
 0 lb
 0 lb
 0 lb

 Structure Total: 21055 lb

- Structure Notes:
1. PER ASTM C-478 SPECS
 2. CONCRETE: 4,000 PSI AT 28 DAYS
 3. REINFORCEMENT:
 - TOP MAT: #4 BAR @ 18" C.C. E.W. (GRADE 60)
 - BOTTOM MAT: #4 BAR @ 9" C.C. E.W. (GRADE 60)
 4. STEPS AT 270 DEGREES
 5. CASTING: JBS 1150 "STORM" SUPPLIED BY OTHERS
 6. LIFTERS: 3 EA. WRA016 CONAC WIRE ROPE ANCHORS FOR PLANT & FIELD HANDLING



Coating (Int): Coating (Ext):	Seam Up: Flat Seam Dn: Groove	Wall Thickness: 7"	Height (Ext): 15"	Weight (Net): 5098 lb Volume (Net): 1.3cu.yd
----------------------------------	----------------------------------	--------------------	-------------------	---