

Job Name: 24-2716 905 E Trinity
 Job Location: Nashville, TN
 Contractor: Hayes Pipe Supply

Plant: Beaver Dam, KY
 10/14/2025 9:35:59 AM

Tech: K. Cardwell
 PC: A. Chambers



Structure ID: A4

P2 BX060060-06LD08-S

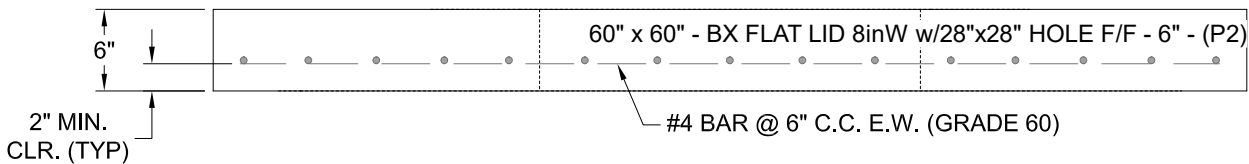
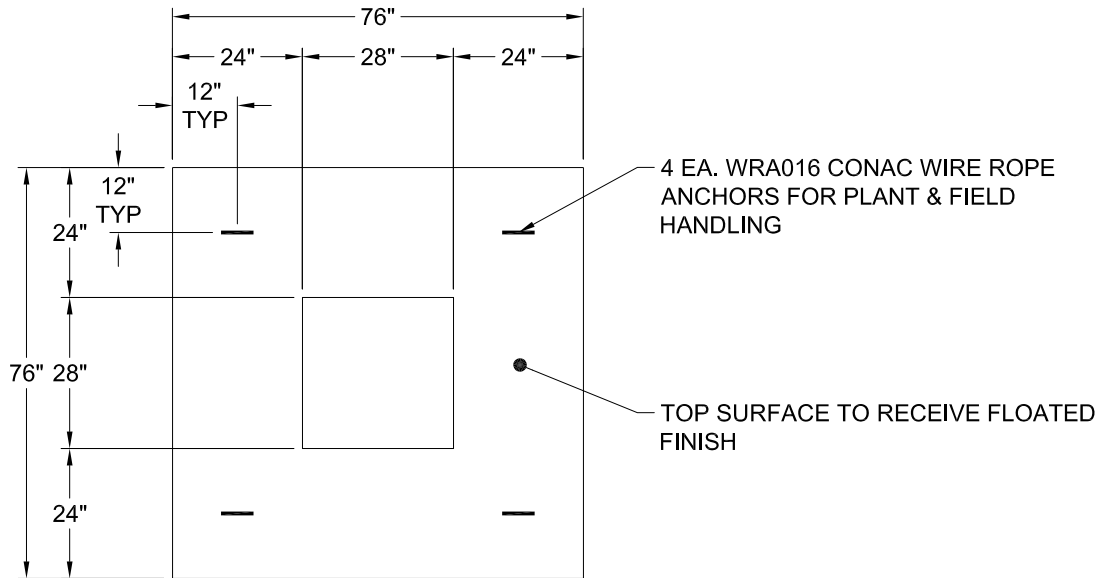
BX FLAT LID 8inW w/28"x28" HOLE F/F

- P3) 28" x 28" - CASTING HEIGHT - 7.50"
- P2) 60" x 60" - BX FLAT LID 8inW w/28"x28" HOLE F/F - 6"
- P1) 60" x 60" - BOX BASE 8inW, 8inF, Variable Ht F/n - 45"
- 1) 60" x 60" - Conseal CS-102 1.00"
- 1) 28" x 28" - Conseal CS-102 1.00"
- 1) Hole - 58 x 42
- 1) DOGHOUSE INVRTD - 48"x42"
- 1) DOGHOUSE INVRTD - 34"x30"
- 4) MH Step ML-10-TDS-NCR - 10"

0 lb
 2513 lb
 8892 lb
 0 lb
 0 lb
 0 lb
 0 lb
 0 lb
 0 lb
 0 lb

 Structure Total: 11405 lb

- Structure Notes:**
1. PER ASTM C-913 SPECS
 2. CONCRETE: 4,000 PSI AT 28 DAYS
 3. REINFORCEMENT: #4 BAR @ 6" C.C. E.W. (GRADE 60) - 2" MIN. REBAR CLEARANCE (TYP)
 4. CASTING: JBS 3300-V SUPPLIED BY OTHERS
 5. LIFTERS: 4 EA. WRA016 CONAC WIRE ROPE ANCHORS FOR PLANT & FIELD HANDLING



Coating (Int): Coating (Ext):	Seam Up: Flat Seam Dn: Flat	Wall Thickness: 8"	Height (Ext): 6"	Weight (Net): 2513 lb Volume (Net): 0.64cu.yd
----------------------------------	--------------------------------	--------------------	------------------	--------------------------------------------------