

Job Name: 24-2716 905 E Trinity
Job Location: Nashville, TN
Contractor: Hayes Pipe Supply

PC: A. Chambers
 TECH: K. Cardwell
 Plant: Beaver Dam, KY



Structure ID: **A3 (Stm)**

Spec: Storm
 Type: BX 6inW, 6inF
 Size: 60" x 96"

Rim: 532.91'
 Invert: 527.86'
 Rim to Invert: 5.05'

Sump: 4.5"
 Floor (Top): 527.485'
 Floor Height: 6"

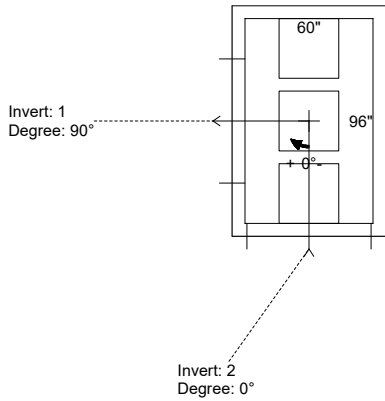
Floor (Bot): 526.985'
 Overall Height: 5.875'
 Slack: 0.6"

Structure Notes:

1. PER ASTM C-913 SPECS
2. CONCRETE: 4,000 PSI AT 28 DAYS
3. REINFORCEMENT:
 - FLAT LID: #5 BAR @ 6" C.C. E.W. (GRADE 60)
 - BASE: #4 BAR @ 12" C.C. E.W. (GRADE 60)
4. CASTING: 3 EA. JBS 3300-V SUPPLIED BY OTHERS

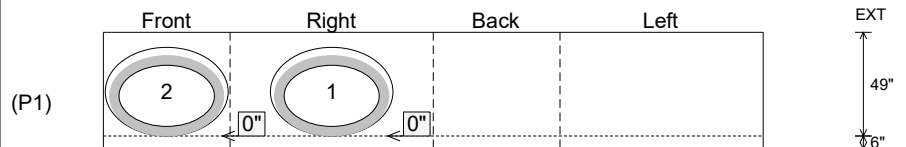
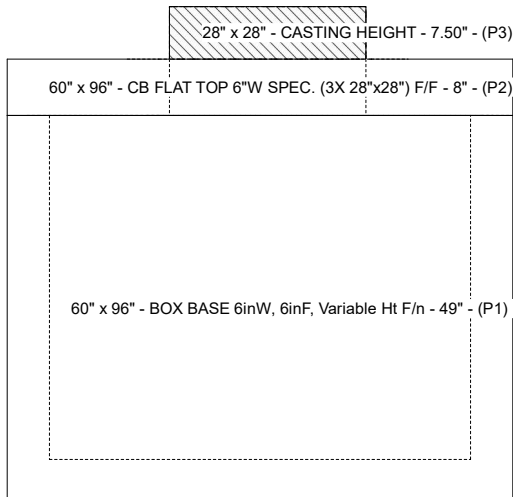
STRUCTURE SUMMARY:

P3) 28" x 28" - CASTING HEIGHT - 7.50" 0 lb
 P2) 60" x 96" - CB FLAT TOP 6"W SPEC. (3X 28"x28") F/F - 8" 3766 lb
 P1) 60" x 96" - BOX BASE 6inW, 6inF, Variable Ht F/n - 49" 10278 lb
 1) 28" x 28" - Conseal CS-102 1.00" 0 lb
 2) Hole - 58 x 42 0 lb
 Structure Total: 14044 lb



Position	Elev	Angle	Pipe	Pipe OD	Hole	Connector	Up ()	Ref
Rim	532.91'							
Reducer								
Invert 1	527.86'	90°	45" x 29" ELL RCP	54" x 38"	58" x 42"	Hole 58 x 42	0"	P1
Invert 2	527.86'	0°	45" x 29" ELL RCP	54" x 38"	58" x 42"	Hole 58 x 42	0"	P1
Invert 3								
Invert 4								
Invert 5								
Invert 6								
Invert 7								
Invert 8								

Cast (Int. Dim.) - Interior Dimensions



Submittal Drawing
 10/13/2025 3:52:42 PM

SUBMITTAL
 APPROVED BY: