

Job Name: 24-2716 905 E Trinity
 Job Location: Nashville, TN
 Contractor: Hayes Pipe Supply

Plant: Beaver Dam, KY
 10/14/2025 9:35:57 AM

Tech: K. Cardwell
 PC: A. Chambers



Structure ID: A1 (Stm)

P2 MH072LD10-30SQ

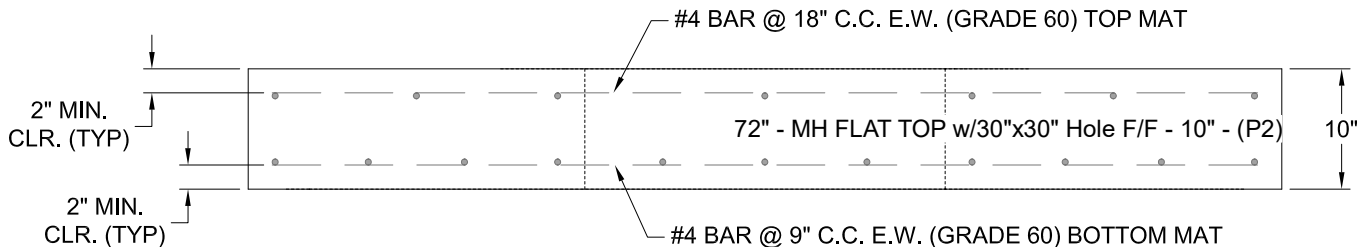
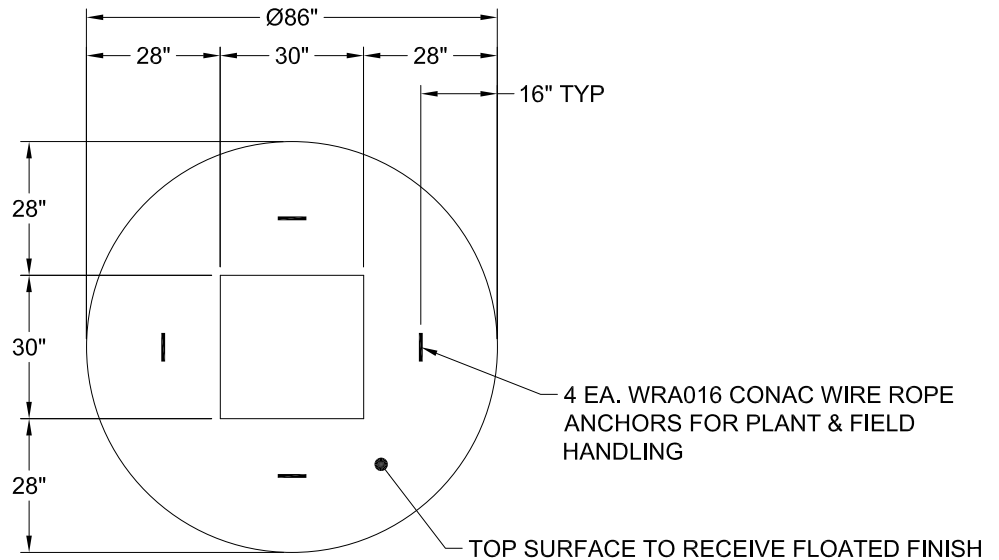
MH FLAT TOP w/30"x30" Hole F/F

- P3) 30" x 30" - CASTING HEIGHT - 6"
- P2) 72" - MH FLAT TOP w/30"x30" Hole F/F - 10"
- P1) 72" - MH BASE Custom Ht F/n - 47"
- 1) 72" - Conseal CS-102 1.00"
- 1) 30" x 30" - Conseal CS-102 1.00"
- 2) Hole - 58 x 42
- 4) MH Step ML-10-TDS-NCR - 10"

0 lb
 4119 lb
 8211 lb
 0 lb
 0 lb
 0 lb

 0 lb
 Structure Total: 12330 lb

- Structure Notes:**
1. PER ASTM C-478 SPECS
 2. CONCRETE: 4,000 PSI AT 28 DAYS
 3. REINFORCEMENT - 2" MIN. REBAR CLEARANCE (TYP):
 - TOP MAT: #4 BAR @ 18" C.C. E.W. (GRADE 60)
 - BOTTOM MAT: #4 BAR @ 9" C.C. E.W. (GRADE 60)
 4. STEPS AT 90 DEGREES
 5. CASTING: JBS 4310 SUPPLIED BY OTHERS
 6. LIFTERS: 4 EA. WRA016 CONAC WIRE ROPE ANCHORS FOR PLANT & FIELD HANDLING



Coating (Int): Coating (Ext):	Seam Up: Flat Seam Dn: Flat	Wall Thickness: 7"	Height (Ext): 10"	Weight (Net): 4119 lb Volume (Net): 1.05cu.yd
----------------------------------	--------------------------------	--------------------	-------------------	--