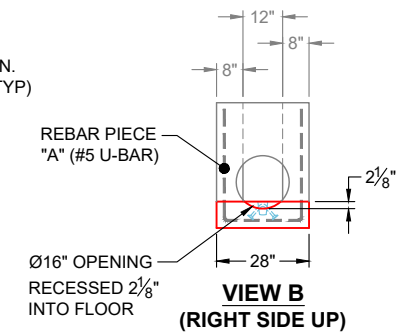
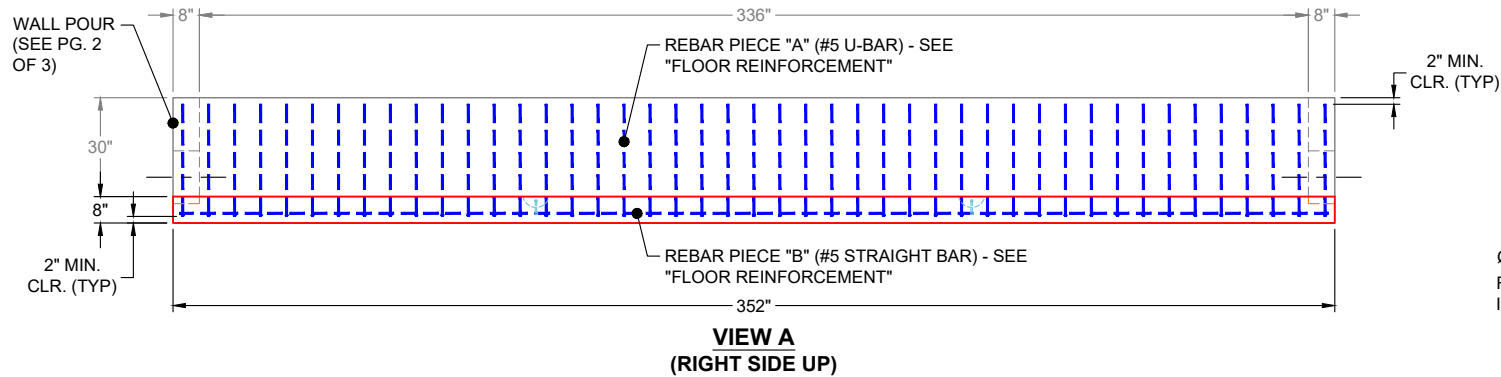
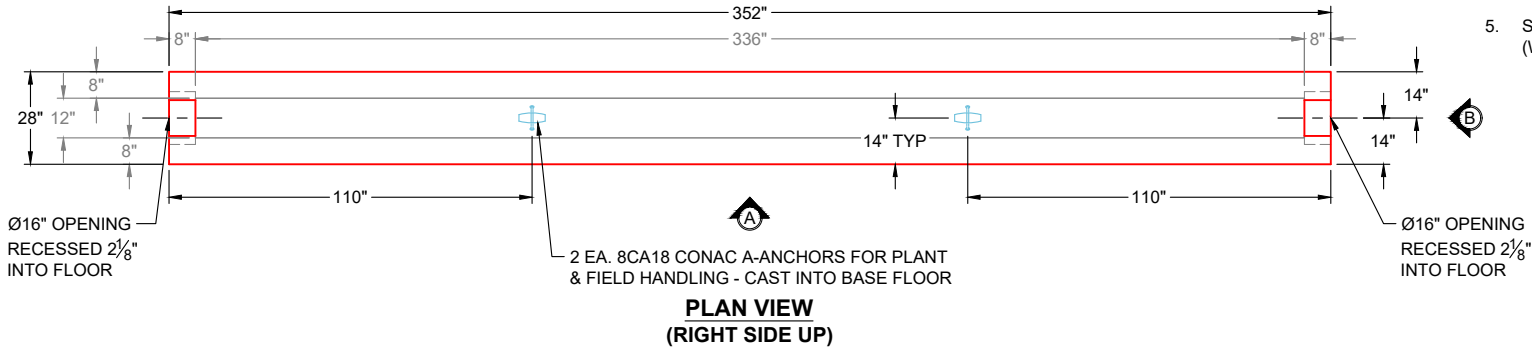

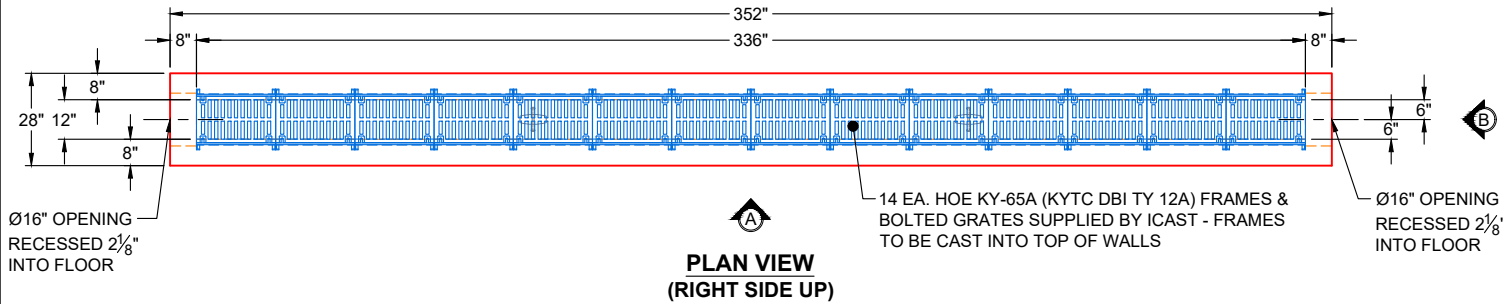


**GENERAL NOTES:**

1. MANUFACTURED TO ASTM C-913 (LATEST REVISION)
2. CONCRETE: 5,000 PSI AT 28 DAYS
3. REINFORCEMENT: #5 BAR @ 8" C.C. E.W. (GRADE 60) - 2" MIN. REBAR CLEARANCE (TYP)  
- SEE "FLOOR REINFORCEMENT" ON THIS PAGE & REBAR DETAILS ON PG. 3 FOR ADDITIONAL INFORMATION
4. TOTAL WEIGHT: 21,010 LBS  
- FIRST POUR (FLOOR): 6,616 LBS  
- SECOND POUR (WALLS): 14,394 LBS
5. SEE PG. 2 OF 3 FOR SECOND POUR (WALL POUR)

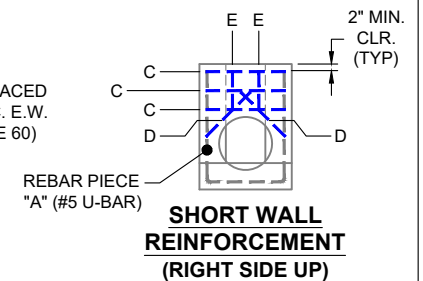
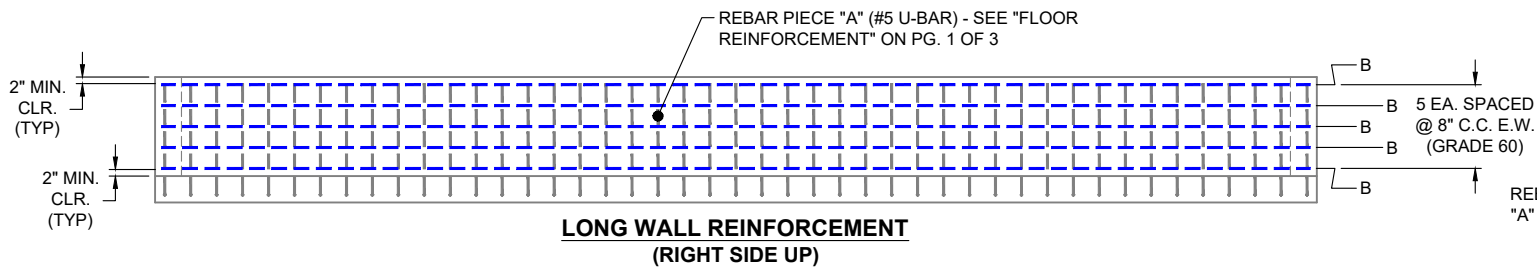
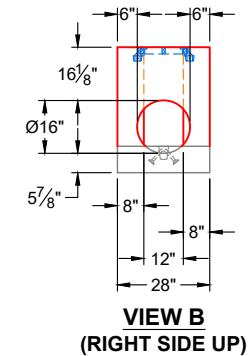
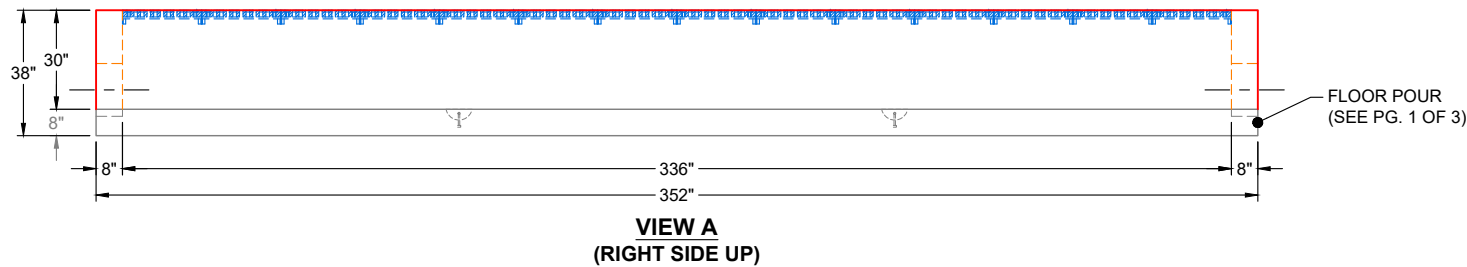



<b>PRODUCTION WORK ORDER</b>		PRODUCT I.D.: CV	DESCRIPTION: 352" X 28" X 8" THICK BASE FLOOR (FIRST POUR)	
	<b>QUALITY CONTROL CHECKLIST</b> <input type="checkbox"/> ALL DIMENSIONS CORRECT. <input type="checkbox"/> LIFTERS INSTALLED. <input type="checkbox"/> CORRECT THICKNESS. <input type="checkbox"/> REINFORCING CORRECT. <input type="checkbox"/> #5 U-BAR STUBS CORRECT. <input type="checkbox"/> BASE MAT CORRECT. <input type="checkbox"/> PRODUCT SQUARE.	PRODUCT VIEW: RIGHT SIDE UP	CUSTOMER: PHILLIPS BROS. CONSTRUCTION, LLC	
		PLANT: BEAVER DAM, KY	PROJECT: CHILD DEVELOPMENT CENTER	
		WEIGHT: 6,616 LBS (21,010 LBS TOTAL)	STRUCTURE: TRENCH DRAIN	
		TOP SECTION JOINT: N / A	ORDER NO: 24-2512	
		BASE SECTION JOINT: N / A	PE: J.H. ROSS	DRAWING: K. CARDWELL
QC CHECK INITIALS:	DATE: 01/22/26	SCALE: NTS	PG. 1 OF 3	

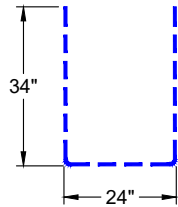


**GENERAL NOTES:**

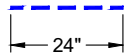
1. MANUFACTURED TO ASTM C-913 (LATEST REVISION)
2. CONCRETE: 5,000 PSI AT 28 DAYS
3. REINFORCEMENT: #5 BAR @ 8" C.C. E.W. (GRADE 60) - 2" MIN. REBAR CLEARANCE (TYP)  
- SEE "LONG WALL REINFORCEMENT" & "SHORT WALL REINFORCEMENT" ON THIS PAGE & REBAR DETAILS ON PG. 3 FOR ADDITIONAL INFORMATION
4. 14 EA. HOE KY-65A (KYTC DBI TY 12A) FRAMES & GRATE SUPPLIED BY ICAST - FRAMES TO BE CAST INTO TOP OF WALLS
5. TOTAL WEIGHT: 21,010 LBS  
- FIRST POUR (FLOOR): 6,616 LBS  
- SECOND POUR (WALLS): 14,394 LBS
6. SEE PG. 1 OF 3 FOR FIRST POUR (FLOOR POUR)



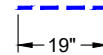
<b>PRODUCTION WORK ORDER</b>		PRODUCT I.D.: CV	DESCRIPTION: 336" X 12" X 30" BASE WALLS (SECOND POUR)	
	<b>QUALITY CONTROL CHECKLIST</b> <input type="checkbox"/> ALL DIMENSIONS CORRECT. <input type="checkbox"/> LIFTERS INSTALLED. <input type="checkbox"/> CORRECT THICKNESS. <input type="checkbox"/> REINFORCING CORRECT. <input type="checkbox"/> SURFACE QUALITY ACCEPTABLE. <input type="checkbox"/> EDGES CHAMFERED. <input type="checkbox"/> ALL PATCHWORK ACCEPTABLE.	PRODUCT VIEW: RIGHT SIDE UP	CUSTOMER: PHILLIPS BROS. CONSTRUCTION, LLC	
		PLANT: BEAVER DAM, KY	PROJECT: CHILD DEVELOPMENT CENTER	
		WEIGHT: 14,394 LBS (21,010 LBS TOTAL)	STRUCTURE: TRENCH DRAIN	
		TOP SECTION JOINT: N / A	ORDER NO: 24-2512	
		BASE SECTION JOINT: FLAT	PE: J.H. ROSS	DRAWING: K. CARDWELL
QC CHECK INITIALS:	DATE: 01/22/26	SCALE: NTS	PG. 2 OF 3	



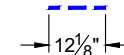
**REBAR PIECE "A"**  
#5 U-BAR  
QTY: 45



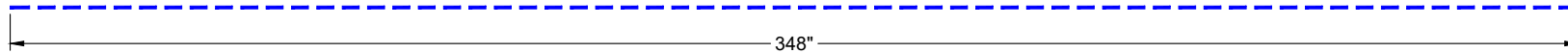
**REBAR PIECE "C"**  
#5 STRAIGHT BAR  
QTY: 6




**REBAR PIECE "D"**  
#5 STRAIGHT BAR  
QTY: 4



**REBAR PIECE "E"**  
#5 STRAIGHT BAR  
QTY: 4



**REBAR PIECE "B"**  
#5 STRAIGHT BAR  
QTY: 14

<b>PRODUCTION WORK ORDER</b>		PRODUCT I.D.: CV	DESCRIPTION: 336" X 12" X 30" BASE - REBAR DETAILS		
	<b>QUALITY CONTROL CHECKLIST</b> <input type="checkbox"/> ALL DIMENSIONS CORRECT. <input type="checkbox"/> LIFTERS INSTALLED. <input type="checkbox"/> CORRECT THICKNESS. <input type="checkbox"/> REINFORCING CORRECT. <input type="checkbox"/> SURFACE QUALITY ACCEPTABLE. <input type="checkbox"/> EDGES CHAMFERED. <input type="checkbox"/> ALL PATCHWORK ACCEPTABLE.	PRODUCT VIEW: RIGHT SIDE UP	CUSTOMER: PHILLIPS BROS. CONSTRUCTION, LLC		
		PLANT: BEAVER DAM, KY	PROJECT: CHILD DEVELOPMENT CENTER		
		WEIGHT: 21,010 LBS TOTAL	STRUCTURE: TRENCH DRAIN		
		TOP SECTION JOINT: N / A	ORDER NO: 24-2512		
		BASE SECTION JOINT: FLAT	PE: J.H. ROSS	DRAWING: K. CARDWELL	
		QC CHECK INITIALS:	DATE: 01/22/26	SCALE: NTS	PG. 3 OF 3

**Job Number:**

24-2512

**Job Name:**

Child Development Center

**Structure:**

Trench Drain

**Note:**

HOE KY-65A Frames Supplied By  
iCast To Be Cast Into Top Of Walls