

Job Name: 24-2287 Freedom Senior Apartments  
 Job Location: Lexington, KY  
 Contractor: Lagco Inc.

Plant: Beaver Dam, KY  
 10/14/2025 11:57:42 AM

Tech: Evan Niles  
 PC: Celina Goff



**Structure ID: SCI-106**

**P1 MH048BA42**

**MH BASE**

|   |                |
|---|----------------|
| P4) 24" x 36" - CASTING HEIGHT - 6"         | 0 lb           |
| P3) 24" x 36" - GRADE RING - 3"             | 306 lb         |
| P2) 48" - MH FLAT TOP w/24"x36" Hole - 12"  | 1300 lb        |
| P1) 48" - MH BASE - 42"                     | 3994 lb        |
| 1) CASTING - HOE 525 SET FLAT GRATE (F/G/H) | 442 lb         |
| 1) 48" - SGL 1"x14.5' Butyl (2x)            | 0 lb           |
| 2) Hole - 20                                | 0 lb           |
| 4) MH Step ML-10-TDS-NCR - 10"              | 0 lb           |
| <b>Structure Total:</b>                     | <b>6042 lb</b> |

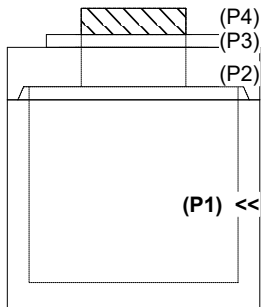
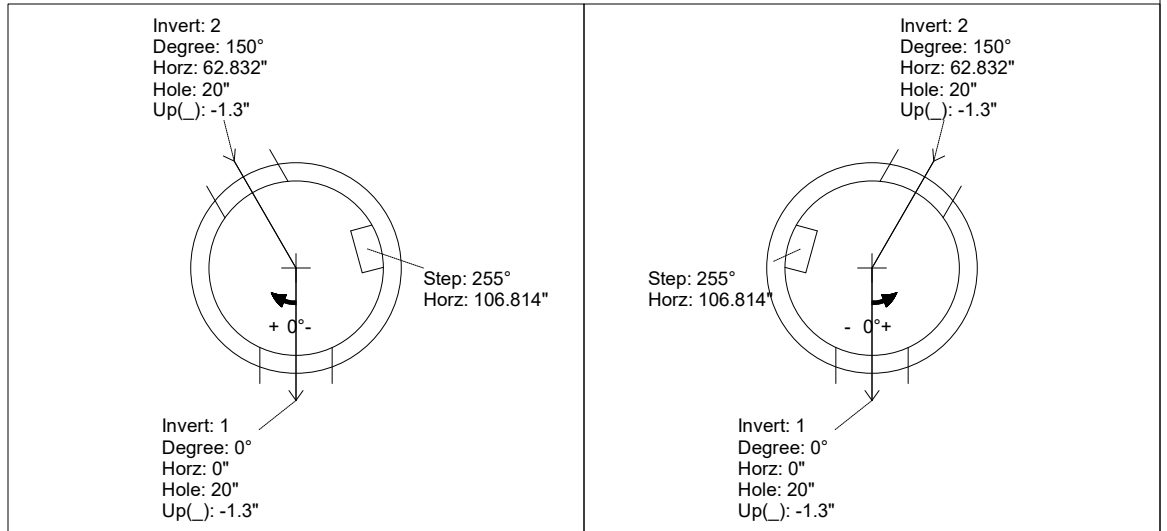
**Structure Notes:**  
 1. PER ASTM C478 SPECIFICATIONS.  
 2. CONCRETE = 4,000 PSI AT 28 DAYS.  
 3. REINFORCING PER ASTM A615 (GRADE 60).  
 - TOP SLAB (As .62) #5 BARS AT 6" C.C.E.W..  
 - RISER/WALLS (As .12)  
 - FLOOR (As .31) #5 BARS AT 12" C.C.E.W.  
 4. CASTING: JRH 525 F/G/H BY ICAST

Rim: 1000.27' Rim to Invert: 5.29' Slack: 0.48" Sump: 0" Step Position: 255

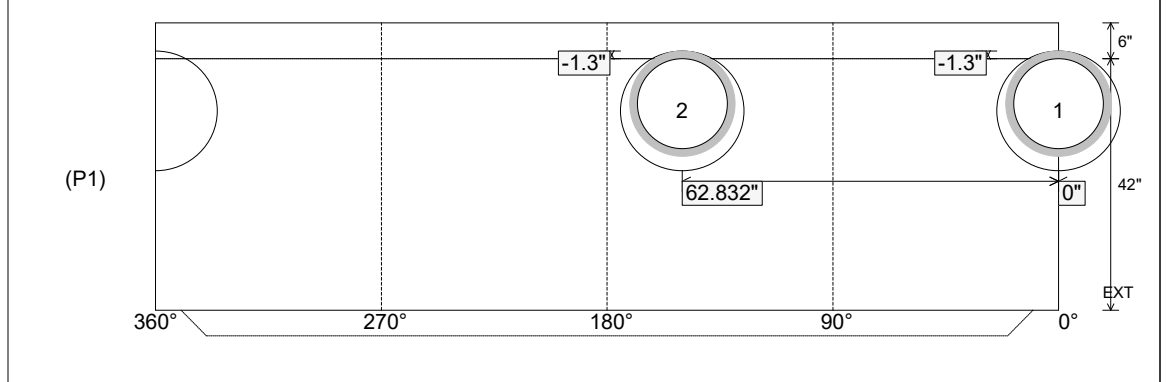
| Position | Elev    | Angle | Ext. (cw) | Pipe     | Pipe OD | Connector | Hole | Horz Size | Up ( ) | Offset |
|----------|---------|-------|-----------|----------|---------|-----------|------|-----------|--------|--------|
| Invert 1 | 994.98' | 0°    | 0"        | 15" HDPE | 17.6"   | Hole 20   | 20"  | 20.629"   | -1.3"  | 0"     |
| Invert 2 | 994.98' | 150°  | 75.922"   | 15" HDPE | 17.6"   | Hole 20   | 20"  | 20.629"   | -1.3"  | 0"     |
| Invert 3 |         |       |           |          |         |           |      |           |        |        |
| Invert 4 |         |       |           |          |         |           |      |           |        |        |
| Invert 5 |         |       |           |          |         |           |      |           |        |        |
| Invert 6 |         |       |           |          |         |           |      |           |        |        |
| Invert 7 |         |       |           |          |         |           |      |           |        |        |
| Invert 8 |         |       |           |          |         |           |      |           |        |        |

RIGHT-SIDE UP VIEW (int. dimensions)

UPSIDE-DOWN VIEW (int. dimensions)



INSIDE WALL DIMENSIONS



|                                  |                                 |  |  |  |
|----------------------------------|---------------------------------|--|--|--|
| Coating (Int):<br>Coating (Ext): | Seam Up: Tongue<br>Seam Dn: n/a | Wall Thickness: 5"<br>Floor Height: 6" | Height (Int): 42"<br>Height (Ext): 48" | Weight (Net): 3994 lb<br>Volume (Net): 1.02cu.yd |
|----------------------------------|---------------------------------|--|--|--|