

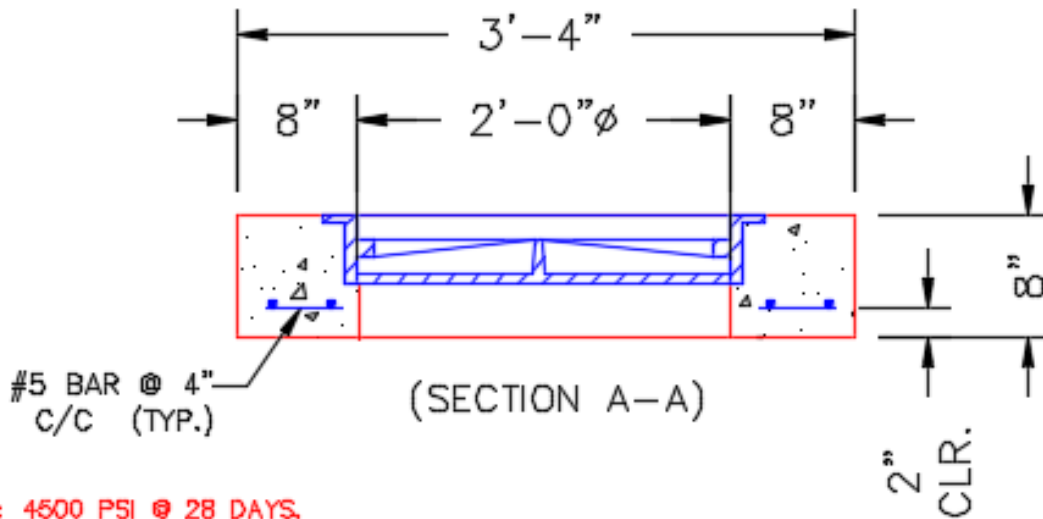
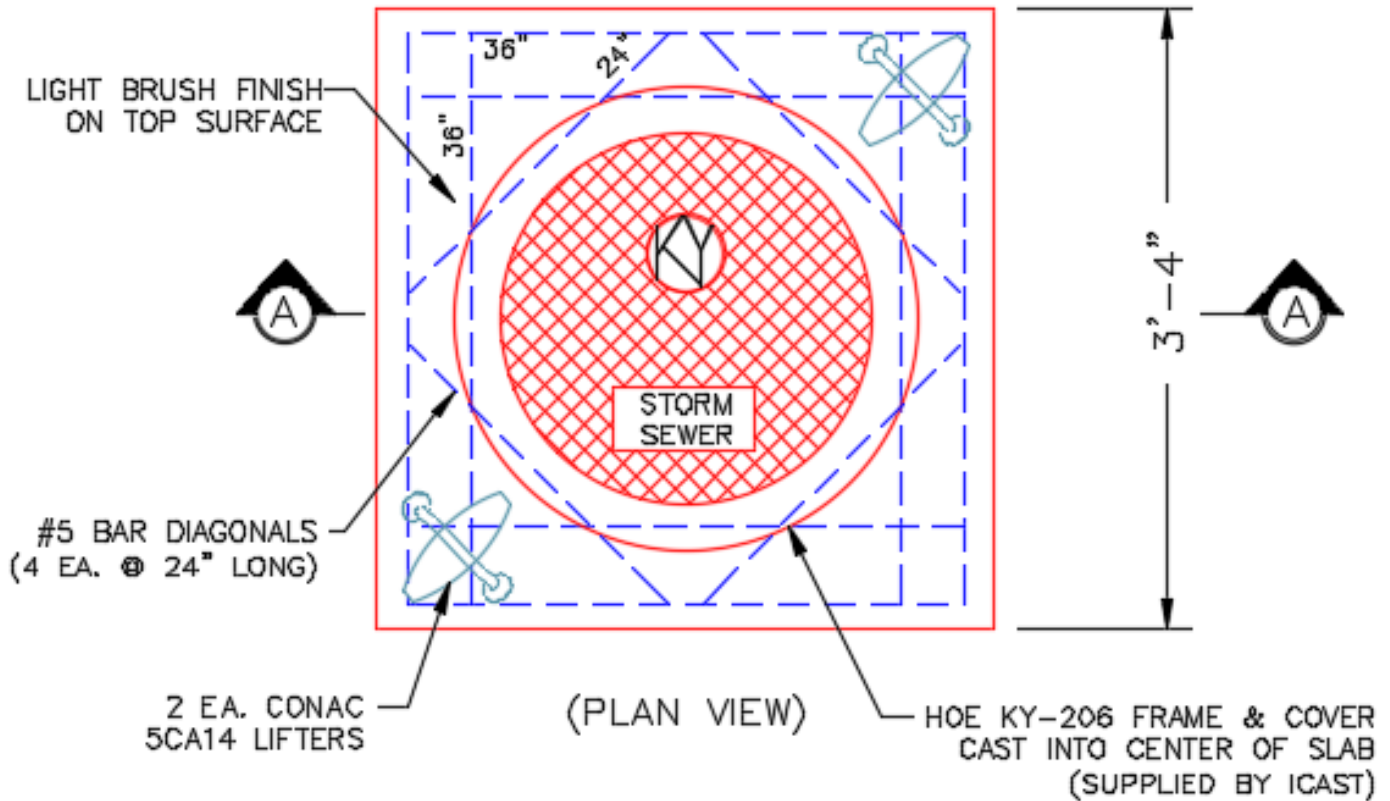


Structure ID: JB-98 173+14 LT

P2 BXLD2424FL-24

BX FLAT LID 8inW SPEC. (KY JB-B1) F/F

KYTC STATE PROJECT



NOTES:

- CONCRETE: 4500 PSI @ 28 DAYS.
- MANUFACTURED TO KYTC & ASTM C-913 SPECIFICATIONS.
- REINFORCING: #4 BAR AS SHOWN-GRADE 60.
- KYTC STATE CERTIFICATIONS REQUIRED.

#4 BAR CUT LIST
 8 EA. @ 36" LG.
 4 EA. @ 24" LG.

Coating (Int):
 Coating (Ext):

Seam Up: Flat
 Seam Dn: Flat

Wall Thickness: 8"

Height (Ext): 8"

Weight (Net): 770 lb
 Volume (Net): 0.2cu.yd