

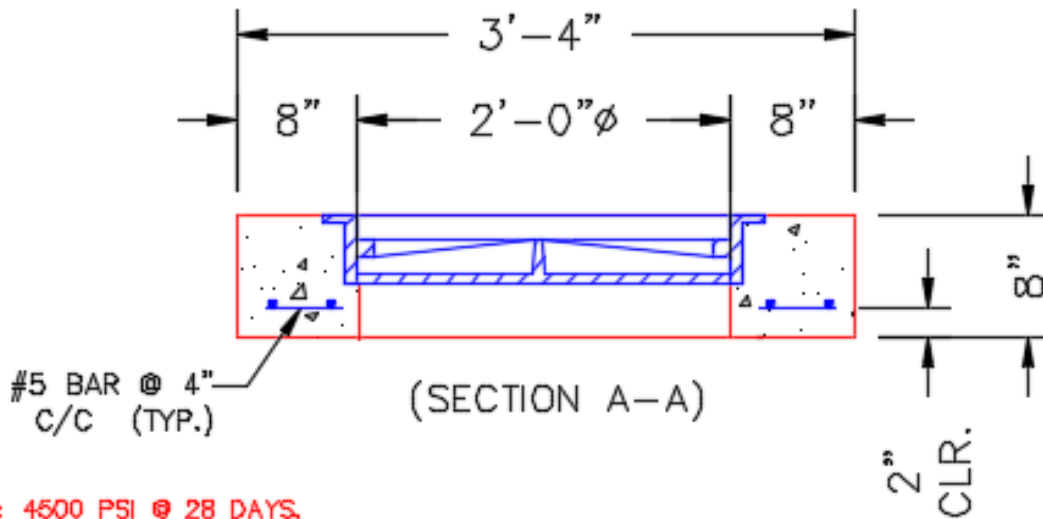
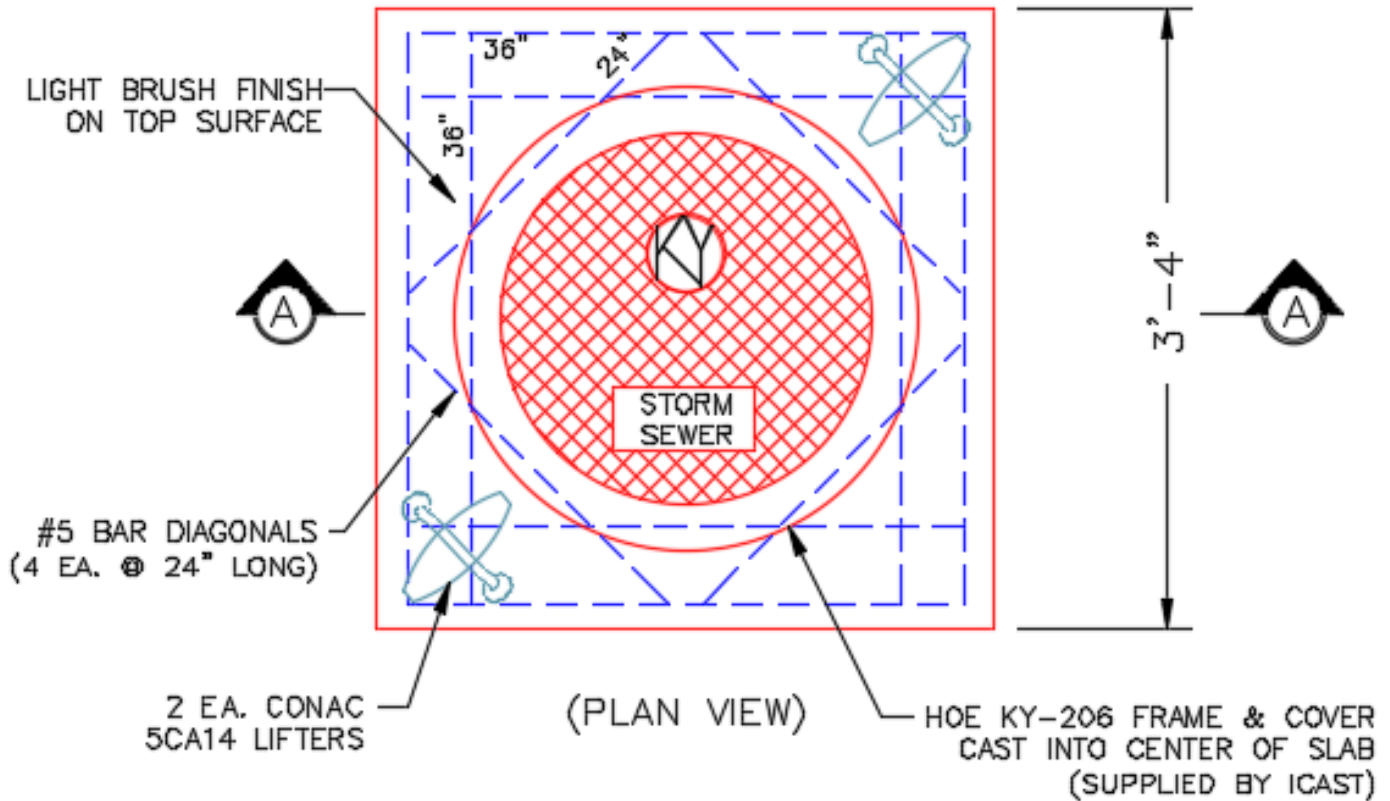


**Structure ID: JB-95 172+31 LT**

**P2 BXLD2424FL-24**

**BX FLAT LID 8inW SPEC. (KY JB-B1) F/F**

**\*KYTC STATE PROJECT\***



**NOTES:**

- CONCRETE: 4500 PSI @ 28 DAYS.
- MANUFACTURED TO KYTC & ASTM C-913 SPECIFICATIONS.
- REINFORCING: #4 BAR AS SHOWN-GRADE 60.
- KYTC STATE CERTIFICATIONS REQUIRED.

**#4 BAR CUT LIST**  
 8 EA. @ 36" LG.  
 4 EA. @ 24" LG.

Coating (Int):  
 Coating (Ext):

Seam Up: Flat  
 Seam Dn: Flat

Wall Thickness: 8"

Height (Ext): 8"

Weight (Net): 770 lb  
 Volume (Net): 0.2cu.yd