

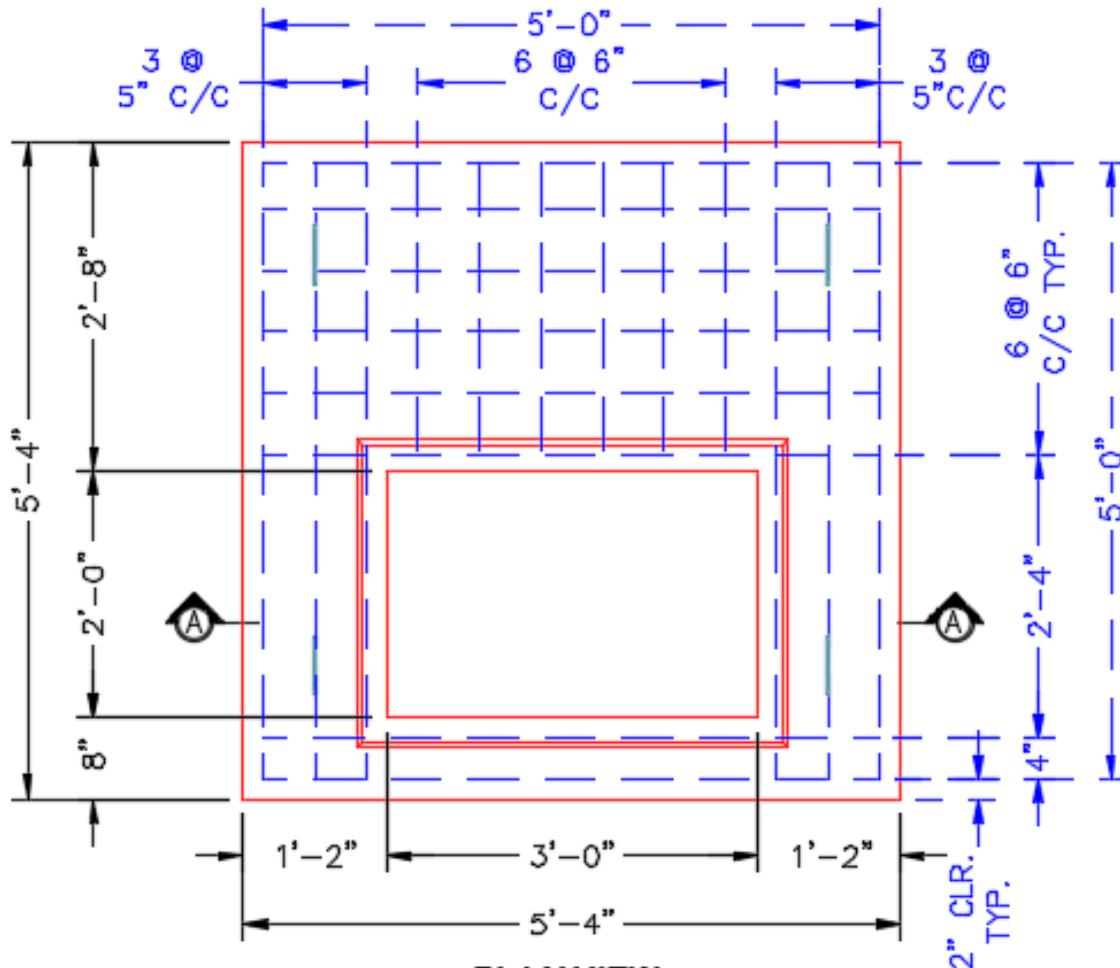


**Structure ID: CBI-73 158+30 LT**

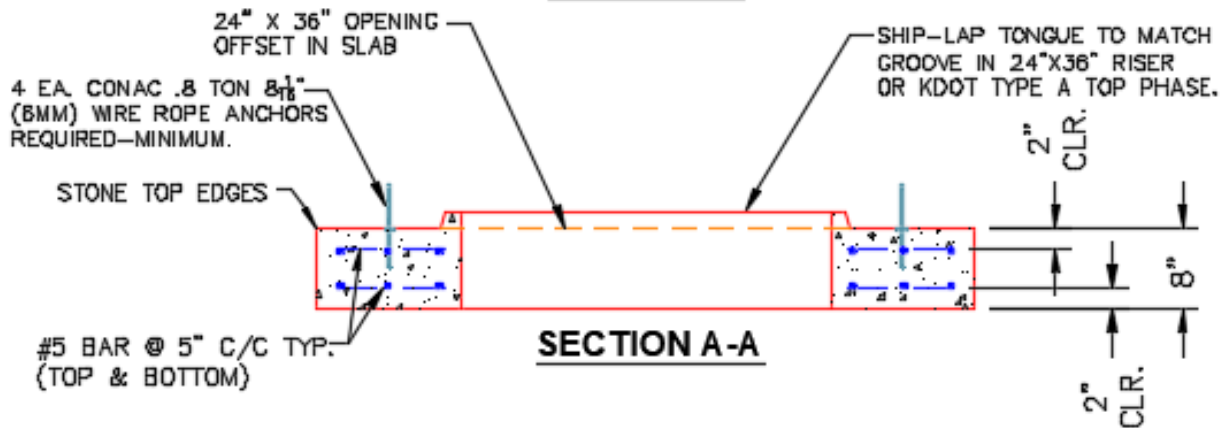
**P2 BX048048-08TS024036**

**CB FT REDUCER 24"X36" HOLE T/F**

**\*KYTC STATE PROJECT\***



**PLAN VIEW**



**SECTION A-A**

**NOTES:**

- CONCRETE: 4500 PSI @ 28 DAYS.
- MANUFACTURED TO KYTC & ASTM C-913 SPECIFICATIONS.
- REINFORCING: #5 BAR AS SHOWN-GRADE 60. (T&B LAYER)
- KYTC STATE CERTIFICATIONS REQUIRED.
- 4 EA. CONAC WIRE LIFTING LOOPS REQUIRED (MIN.)

**#5 BAR CUT LIST**  
 28 EA. @ 60" LG.  
 12 EA. @ 28" LG.

Coating (Int):  
 Coating (Ext):

Seam Up: Tongue  
 Seam Dn: Flat

Wall Thickness: 8"

Height (Ext): 8"

Weight (Net): 2170 lb  
 Volume (Net): 0.55cu.yd