

**Structure ID: CBI-69 151+50 LT**

**P1 BX2436-08BVF**

**BOX BASE 8inW, 8inF, Variable Ht T/n**

P3) 24" x 120" - CB INLET KY A 10' TOP LEFT F/G - 10" P2) 24" x 120" - CB INLET KY A 10' BOTTOM LEFT T/G - 18" P1) 24" x 36" - BOX BASE 8inW, 8inF, Variable Ht T/n - 28" 1) 24" x 36" - SGL 1"x14.5' Butyl 1) Hole - 18 2) Hole - 6	3400 lb 5270 lb 4078 lb 0 lb 0 lb 0 lb ----- Structure Total: 12747 lb
---	---

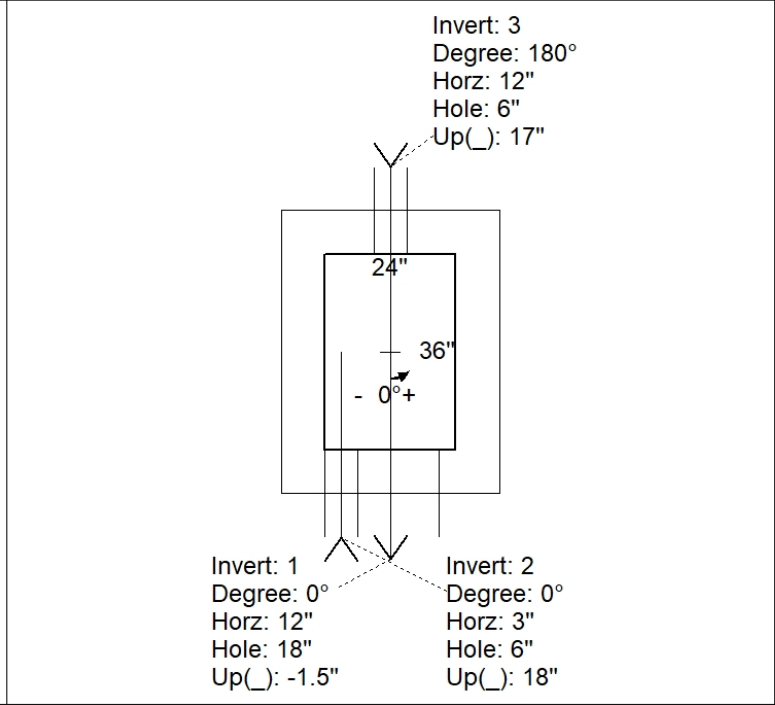
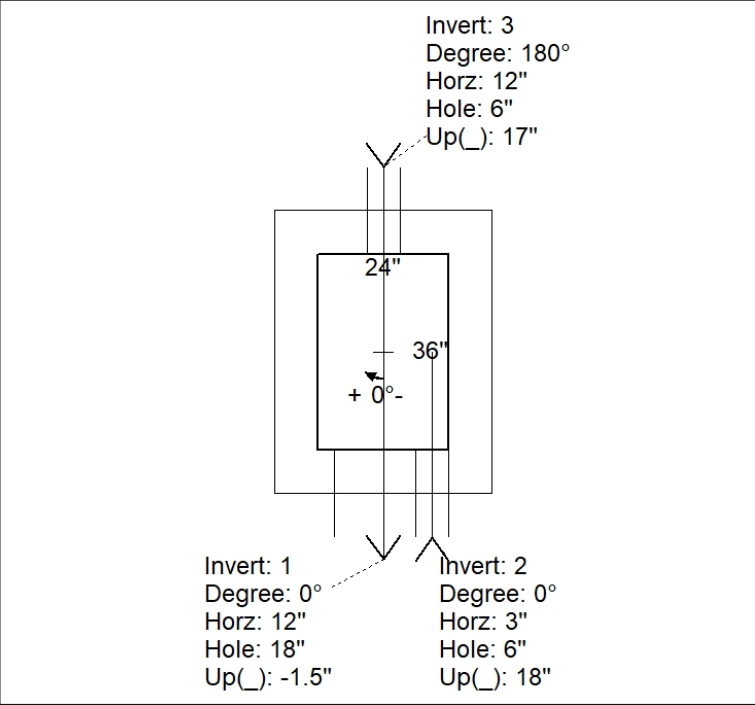
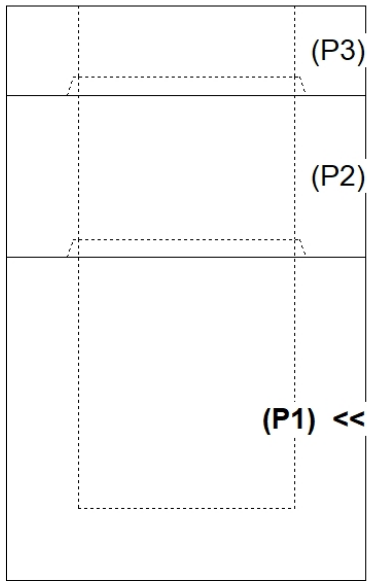
Structure Notes:  
 -KYTC STATE PROJECT 241302.  
 -MANUFACTURED TO KYTC & ASTM C-913 SPECIFICATIONS.  
 -#5 BAR @ 12" C/C E.W. (TYP.)  
 -CS-102-1" BUTYL MASTIC (SUPPLIED BY ICAST).  
 -"RIM" ELEVATION SHOWN IS TOP OF CURB/TOP PHASE.

Rim: 539'      Rim to Invert: 4.76'      Slack: 1.12"      Sump: 0"      Step Position:

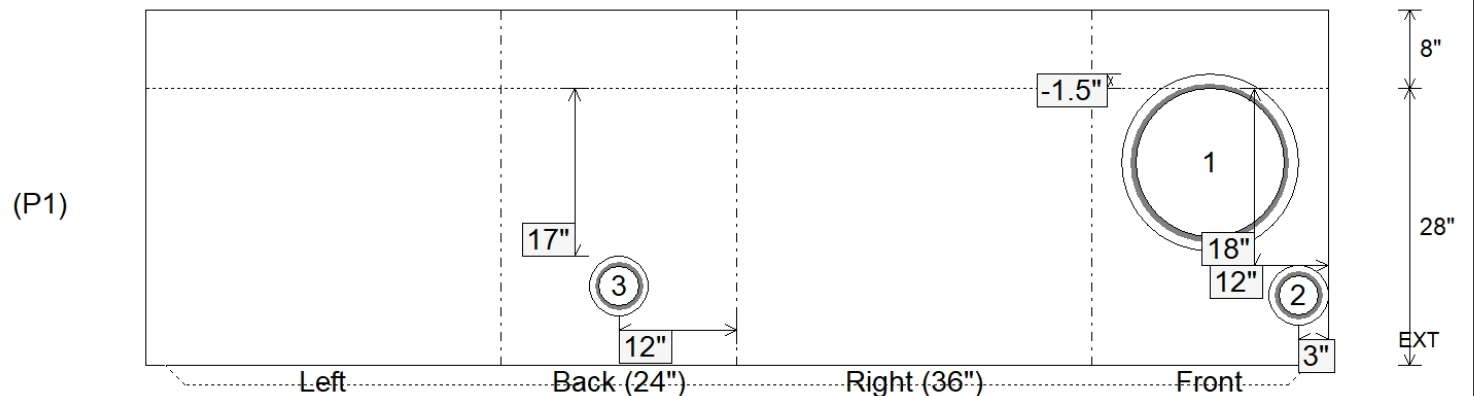
Position	Elev	Angle	Ext. (cw)	Pipe	Pipe OD	Connector	Hole	Horz Size	Up ( )	Offset
Invert 1	534.24'	0°	20"	15" CMP	16"	Hole 18	18"	18"	-1.5"	0"
Invert 2	535.82'	0°	11"	4" HDPE	4.8"	Hole 6	6"	6"	18"	-9"
Invert 3	535.74'	180°	20"	4" HDPE	4.8"	Hole 6	6"	6"	17"	0"
Invert 4										
Invert 5										
Invert 6										
Invert 7										
Invert 8										

RIGHT-SIDE UP VIEW (int. dimensions)

UPSIDE-DOWN VIEW (int. dimensions)



INSIDE WALL DIMENSIONS



Coating (Int): Coating (Ext):	Seam Up: Tongue Seam Dn: n/a	Wall Thickness: 8" Floor Height: 8"	Height (Int): 28" Height (Ext): 36"	Weight (Net): 4078 lb Volume (Net): 1.04cu.yd
----------------------------------	---------------------------------	--	--	--