

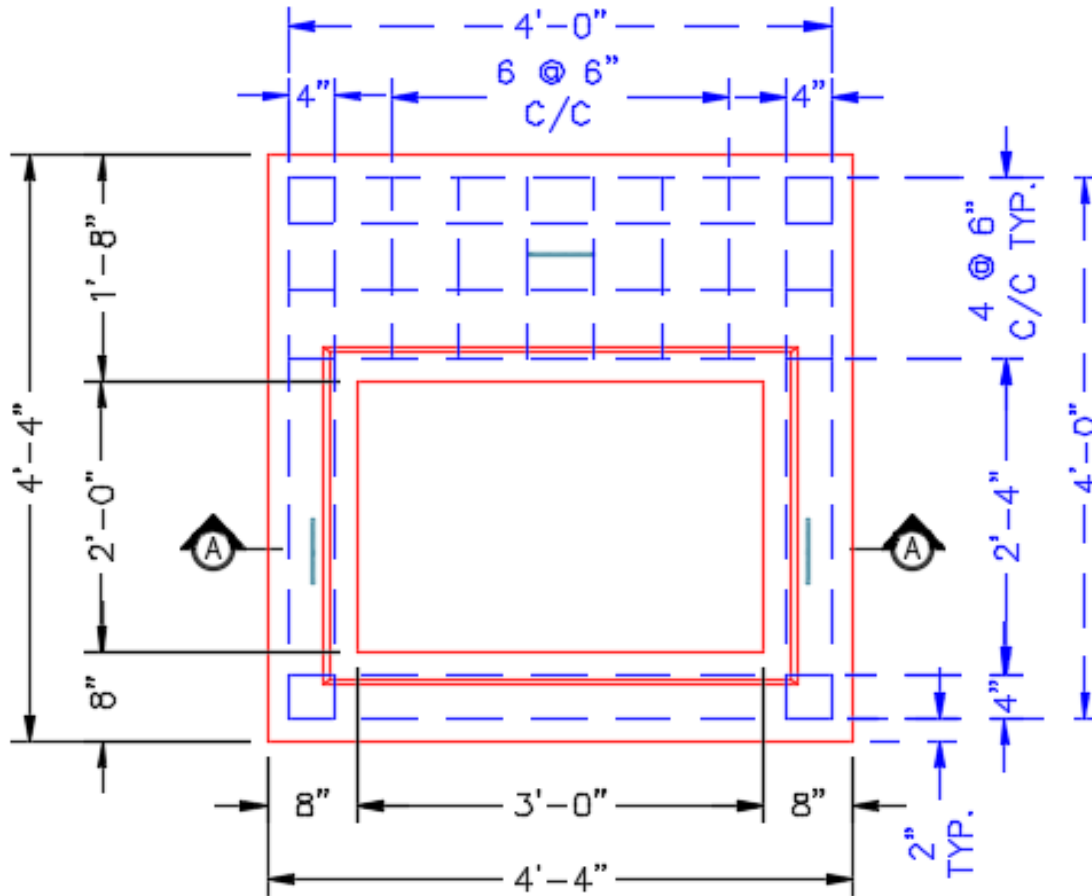


Structure ID: CBI-117 186+03 LT

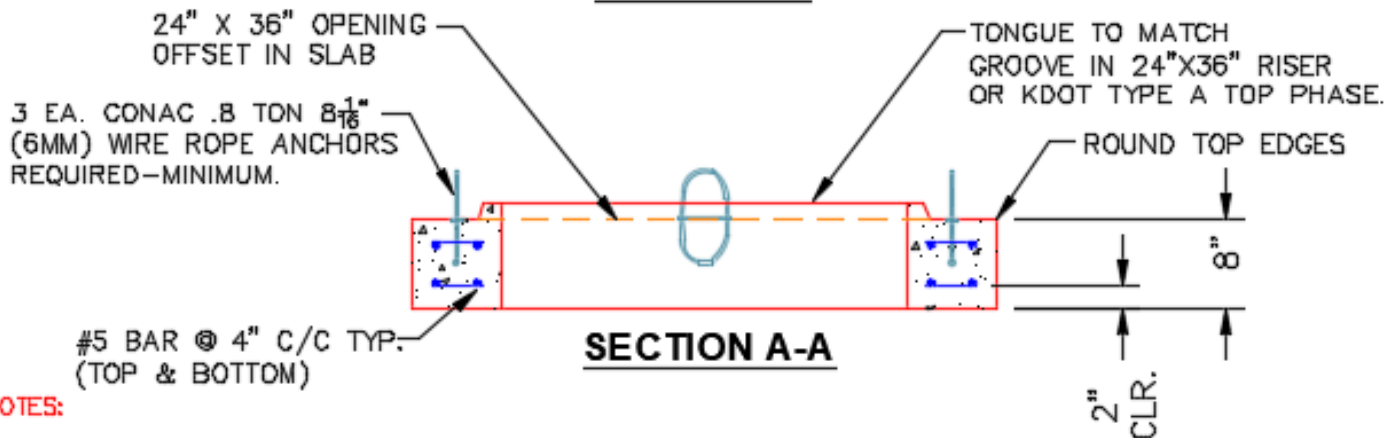
P2 BX036036-08TS024036

CB TRANSITION SLAB 24"X36" HOLE T/F

KYTC STATE PROJECT



PLAN VIEW



SECTION A-A

NOTES:

- CONCRETE: 4500 PSI @ 28 DAYS.
- REINFORCING: #5 BAR @ 4" & 6" C/C-GRADE 60. (TOP & BOTTOM LAYERS).
- KDOT CERTIFICATIONS REQUIRED.
- 3 EA. CONAC WIRE LOOP LIFTERS REQUIRED.

#5 BAR CUT LIST

- 20 EA. @ 48" LG.
- 12 EA. @ 16" LG.

Coating (Int): Coating (Ext):	Seam Up: Tongue Seam Dn: Flat	Wall Thickness: 8"	Height (Ext): 8"	Weight (Net): 1235 lb Volume (Net): 0.32cu.yd
----------------------------------	----------------------------------	--------------------	------------------	--------------------------------------------------