

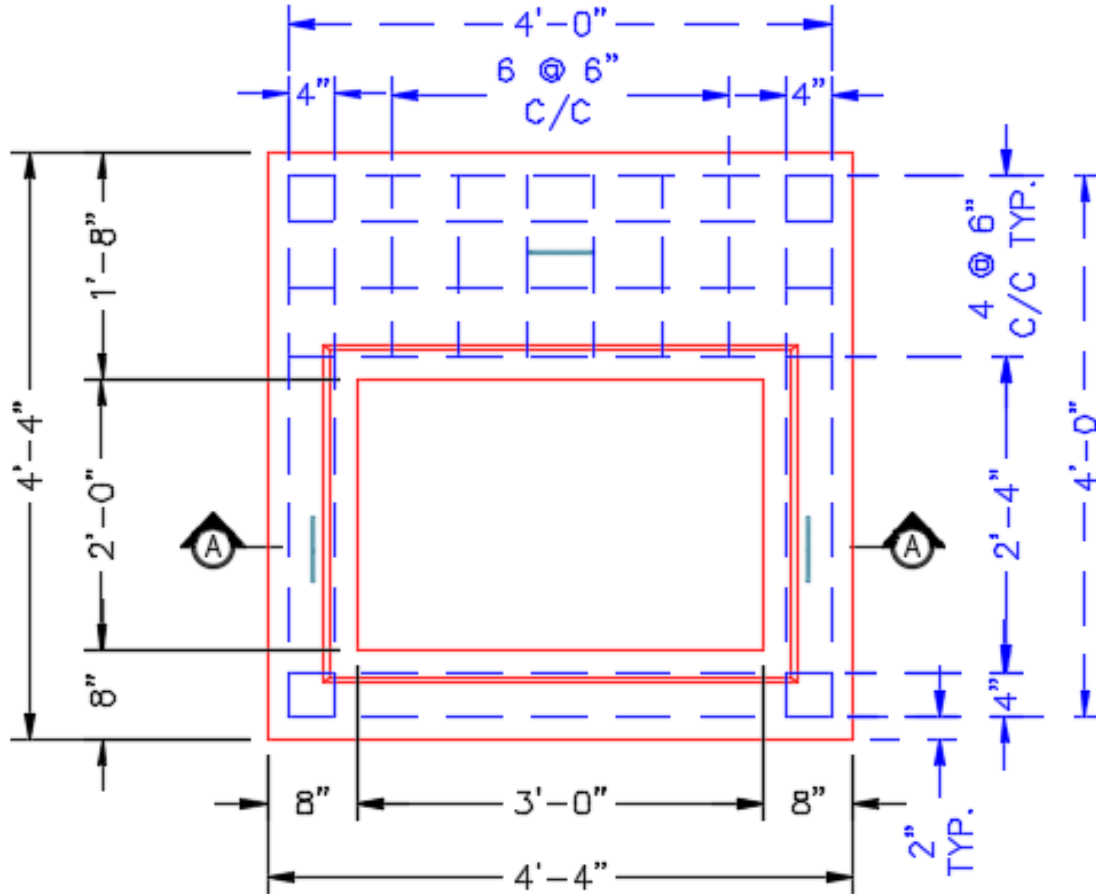


Structure ID: CBI-107 183+70 LT

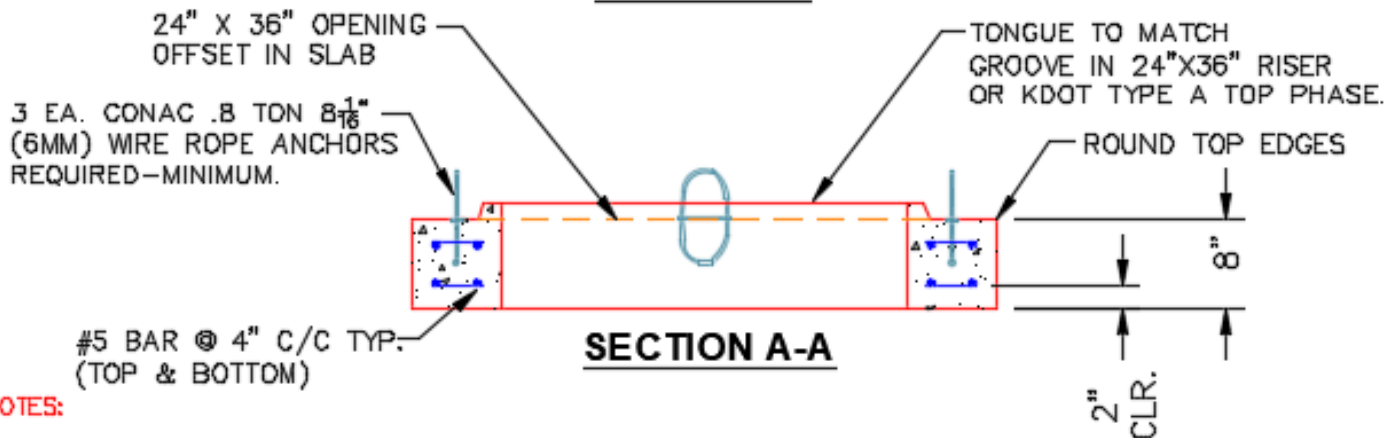
P2 BX036036-08TS024036

CB TRANSITION SLAB 24"X36" HOLE T/F

KYTC STATE PROJECT



PLAN VIEW



SECTION A-A

NOTES:

- CONCRETE: 4500 PSI @ 28 DAYS.
- REINFORCING: #5 BAR @ 4" & 6" C/C-GRADE 60. (TOP & BOTTOM LAYERS).
- KDOT CERTIFICATIONS REQUIRED.
- 3 EA. CONAC WIRE LOOP LIFTERS REQUIRED.

#5 BAR CUT LIST

- 20 EA. @ 48" LG.
- 12 EA. @ 16" LG.

Coating (Int):
 Coating (Ext):

Seam Up: Tongue
 Seam Dn: Flat

Wall Thickness: 8"

Height (Ext): 8"

Weight (Net): 1235 lb
 Volume (Net): 0.32cu.yd