

**Structure ID: 55+00 LT CBI-A, 4-6, JETT DR.**

**P1 BX2436-08BVF BOX BASE 8inW, 8inF, Variable Ht**

P3) 24" x 120" - CBITA10-TS - CB INLET KY A 10' TOP SAG - 0.833' P2) 24" x 120" - CBITA10-BS - CB INLET KY A 10' BOTTOM SAG - 1.5' P1) 24" x 36" - BX2436-08BVF - BOX BASE 8inW, 8inF, Variable Ht - 2.167' 1) 24" x 36" - PSCONCS102-1 - Conseal CS-102 1.00" - 0' 1) Hole - 0' 2) Hole - 0'	3398 lb 5270 lb 3805 lb 0 lb 0 lb 0 lb <hr style="width: 50px; margin-left: auto; margin-right: 0;"/> Structure Total: 12473 lb
--	---

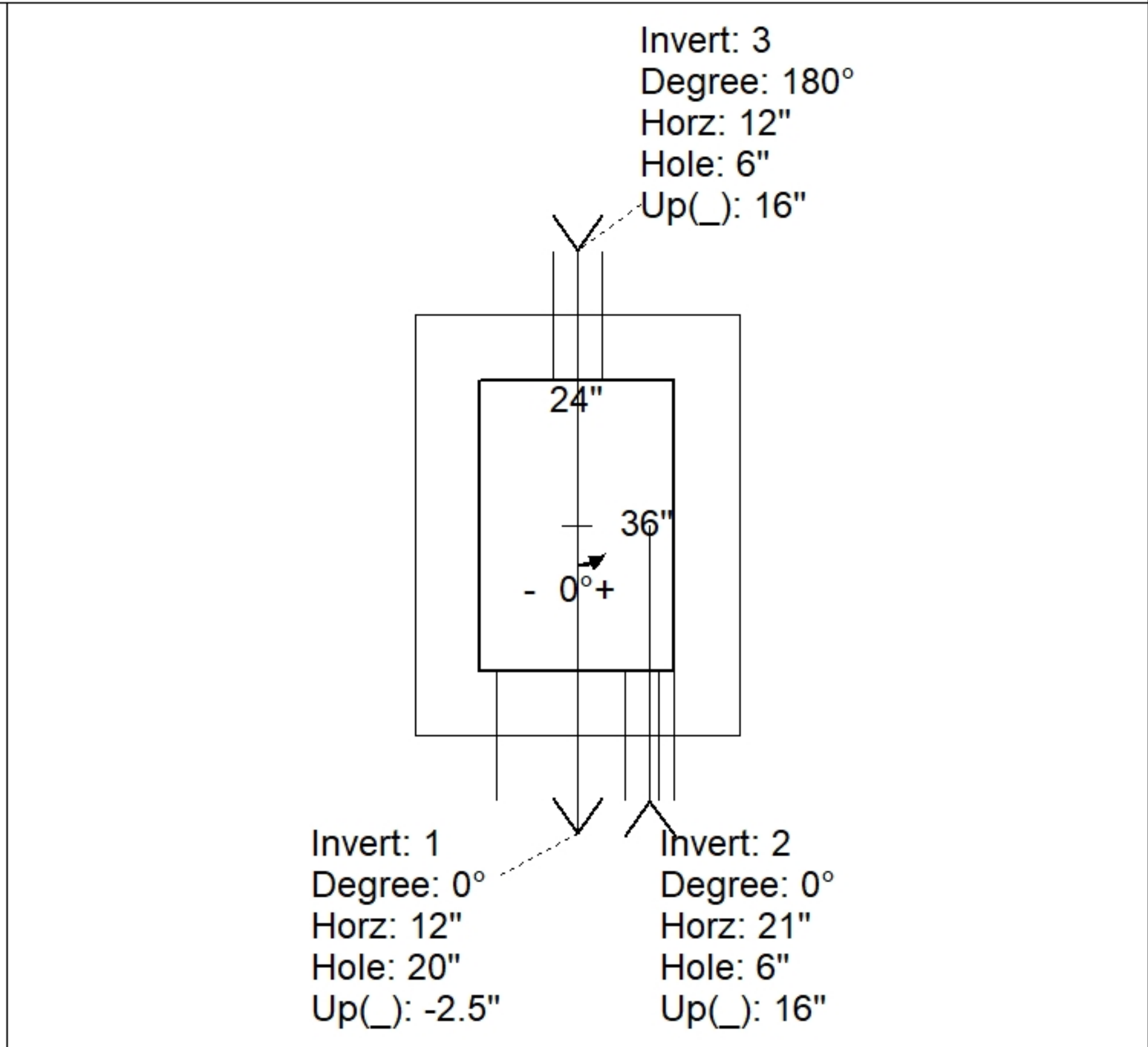
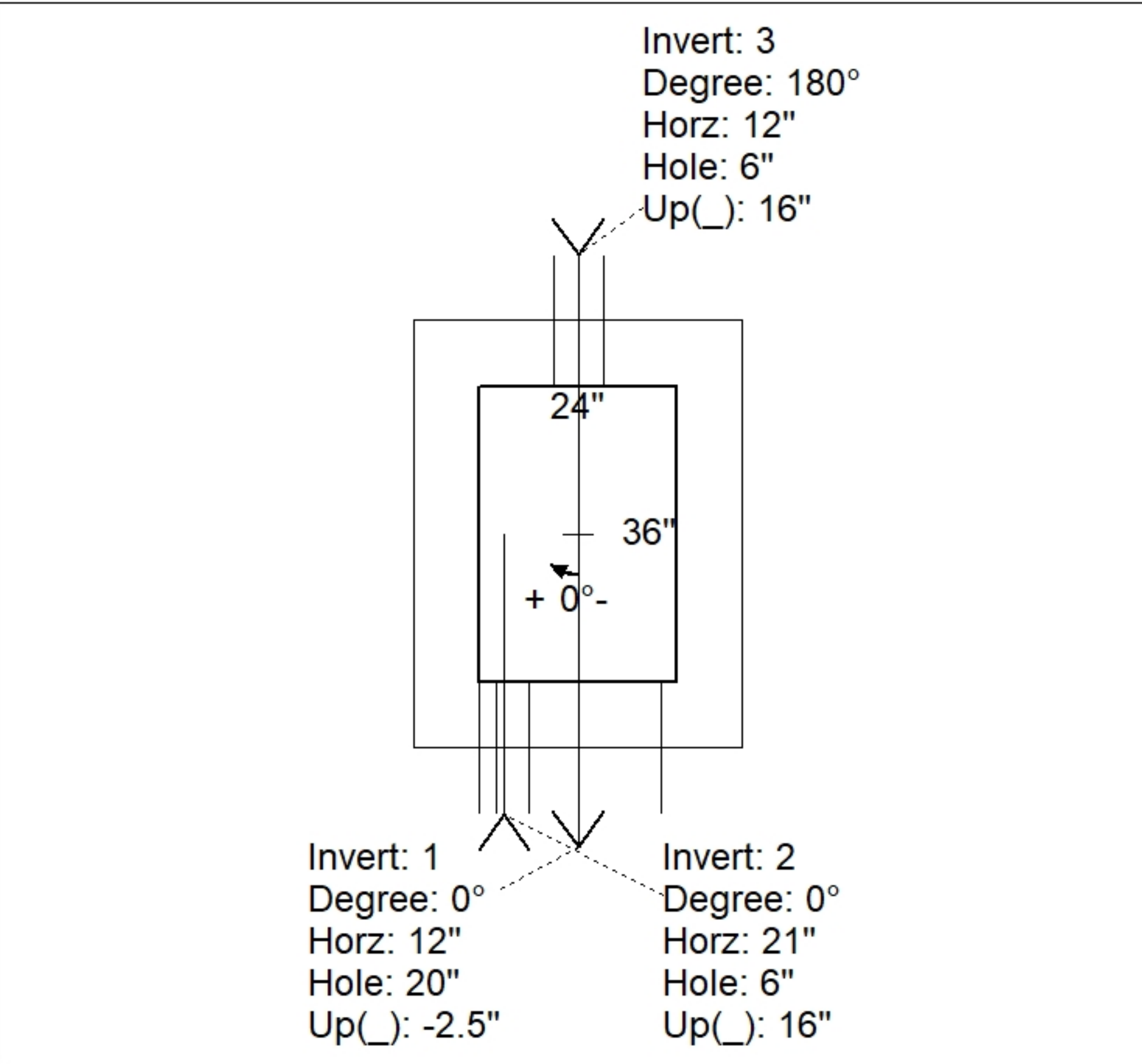
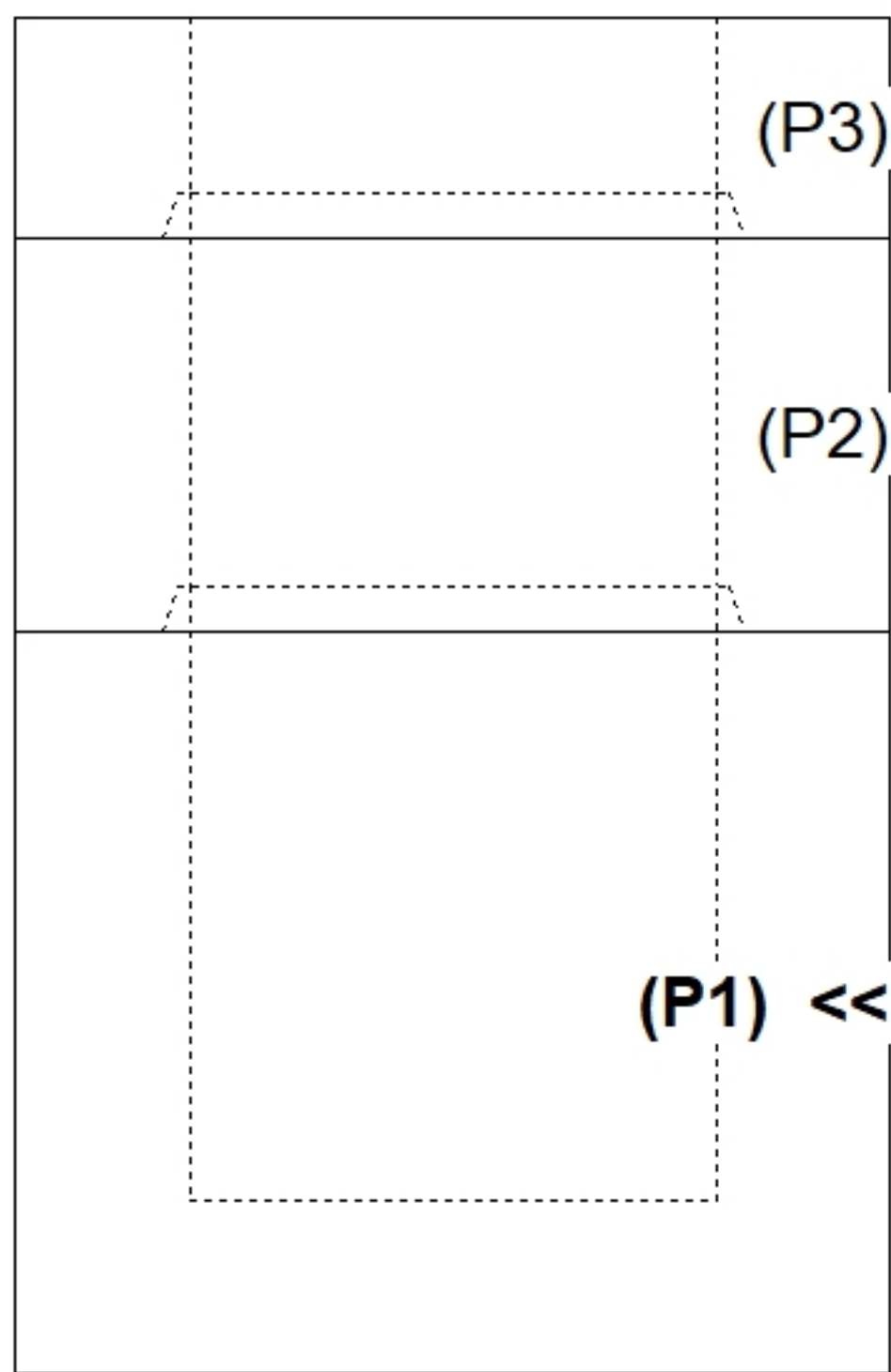
**Structure Notes:**  
 -KYTC STATE PROJECT 241306  
 -MANUFACTURED PER KYTC SPECIFICATIONS.  
 -REINFORCING: #5 BAR @ 12" C/C E.W.  
 -KYTC CERTIFICATIONS REQUIRED.

Rim: 737'      Rim to Invert: 4.75'      Slack: 0.25'      Sump: 0'      Step Position:

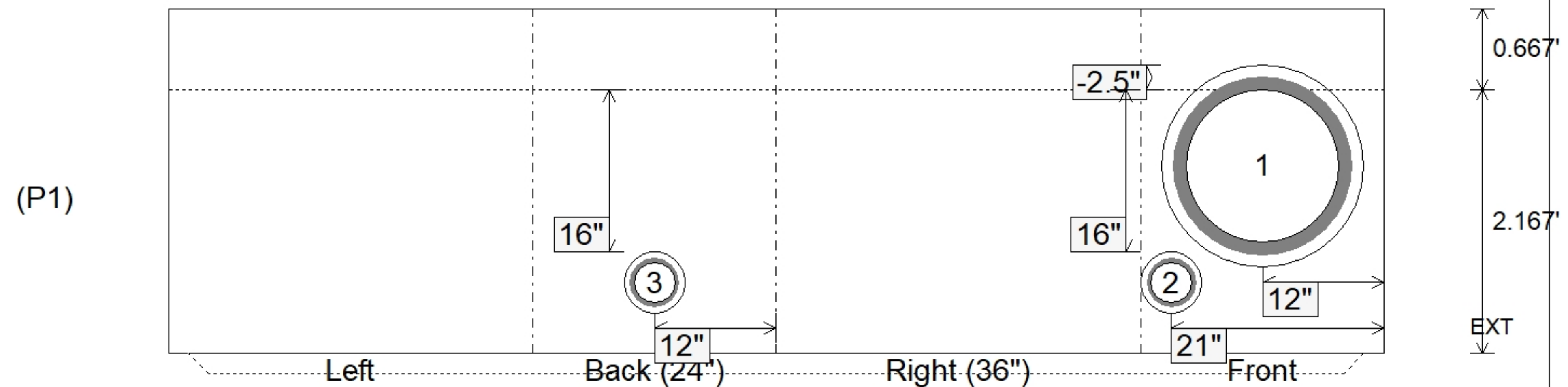
Position	Elev	Angle	Ext. (cw)	Pipe	Pipe OD	Connector	Hole	Horz Size	Up ( )	Offset
Invert 1	732.25'	0°	20"	15" HDPE	17.6"	Hole 20	20"	20"	-2.5"	0"
Invert 2	733.67'	0°	29"	4" HDPE	4.8"	Hole 6	6"	6"	16"	9"
Invert 3	733.67'	180°	20"	4" HDPE	4.8"	Hole 6	6"	6"	16"	0"
Invert 4										
Invert 5										
Invert 6										
Invert 7										
Invert 8										

**RIGHT-SIDE UP VIEW (int. dimensions)**

**UPSIDE-DOWN VIEW (int. dimensions)**



**INSIDE WALL DIMENSIONS**



Coating (Int): Coating (Ext):	Seam Up: Tongue Seam Dn: n/a	Wall Thickness: 8" Floor Height: 0.667'	Height (Int): 2.167' Height (Ext): 2.833'	Weight (Net): 3805 lb Volume (Net): 0.97cu.yd
----------------------------------	---------------------------------	--	--	--