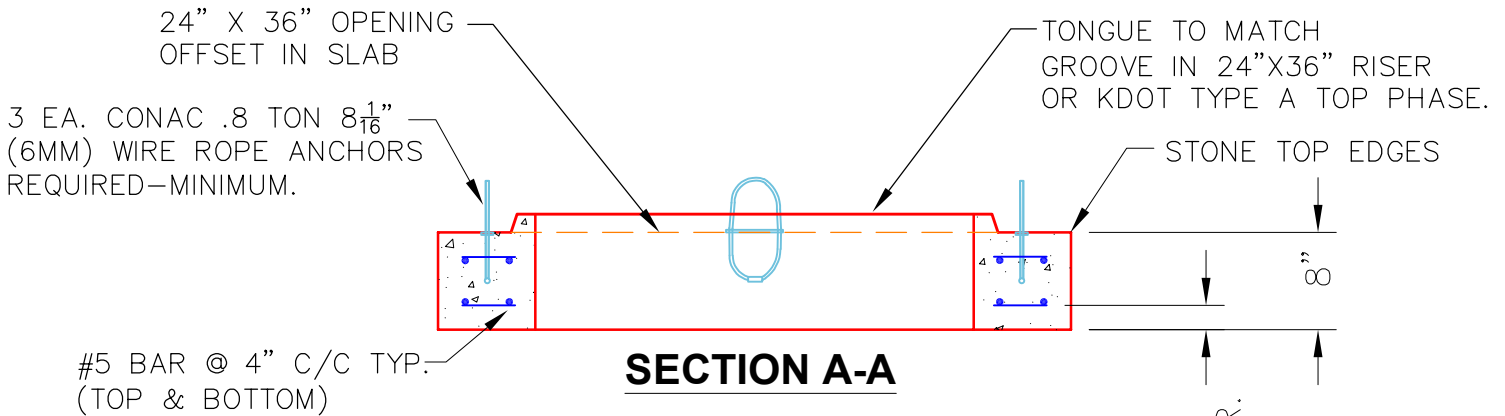


PLAN VIEW



SECTION A-A

NOTES:

- CONCRETE: 4500 PSI @ 28 DAYS.
- REINFORCING: #5 BAR @ 4" & 6" C/C—GRADE 60.
(TOP & BOTTOM LAYERS).
- KDOT CERTIFICATIONS REQUIRED.
- 3 EA. CONAC WIRE LOOP LIFTERS REQUIRED.

#5 BAR CUT LIST
20 EA. @ 48" LG.
12 EA. @ 16" LG.

PRODUCTION WORK ORDER

PRODUCT I.D.:
BX036036-08TS024036

DESCRIPTION:
CURB INLET TRANSITION SLAB 36" X 36" X 8"



QUALITY CONTROL CHECKLIST

- ALL DIMENSIONS CORRECT.
- LIFTERS INSTALLED.
- OPENING OFFSET.
- REINFORCING CORRECT.
- SHIP-LAP TONGUE INSTALLED.
- EDGES CHAMFERED.
- ANY PATCHWORK ACCEPTABLE.

PRODUCT VIEW: RIGHT SIDE UP

PLANT: BEAVER DAM, KY.

WEIGHT: 1,290 LBS.

TOP JOINT: SHIP-LAP

BOTTOM JOINT: FLAT

QC CHECK INITIALS:

CUSTOMER: TRITON CONSTRUCTION, INC.

PROJECT: BREATHITT CO.. 241306

STRUCTURE ID.: 522+50 RT CBI-A, 21-2 (SEC. P2)

SALES ORDER NO.: 24-1632B

P.C.: C. GOFF

DRAWING: N. RICHARDS

DATE: 02/10/26

SCALE: NTS

PG. 1 of 1