

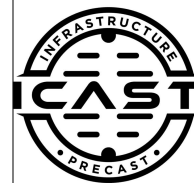
Job Name: 24-1498B - Harpeth Valley Slide Gate Structure
 Job Location: Nashville, TN
 Contractor: Garney Companies, Inc.

Plant: Beaver Dam, KY

Tech: K. Cardwell

12/29/2025 7:42:32 AM

PC: J. Jarvis



Structure ID: Gate Str

P2 BX7272_12R30

BOX RISER 12inW, Variable Ht F/G

P3) 72" x 72" - CASTING HEIGHT - 0"
 P2) 72" x 72" - BOX RISER 12inW, Variable Ht F/G - 50"
 P1) 72" x 72" - BOX BASE 12inW, 12inF, Variable Ht T/n - 70"
 1) SECONDARY POUR
 1) 72" x 72" - Conseal CS-102 1.00" (Double)
 2) Kor-N-Seal2 - S206-42

0 lb
 16917 lb
 30173 lb
 0 lb
 0 lb
 13 lb

Structure Total: 47103 lb

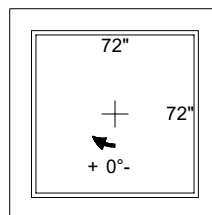
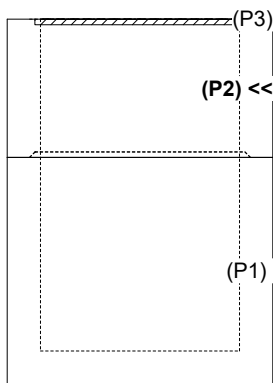
Structure Notes:

1. PER ASTM C-913 SPECS
2. CONCRETE: 4,000 PSI AT 28 DAYS
3. REINFORCEMENT: PER ATTACHED DESIGN BY WINFORD A. PETRONE, P.E.
4. FLOOR SLOPE TO OUTLET BY OTHERS
5. ALUM GRATING & ANGLE GRATE SEAT SUPPLIED BY OTHERS
6. SLIDE GATE BY OTHERS
7. 2" WIDE X 2" DEEP RECESS REQUIRED AROUND INNER TOP SIDE OF RISER WALLS

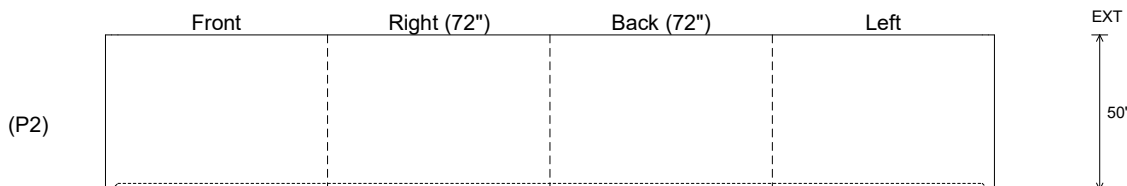
Rim: 409' Rim to Invert: 8.92' Slack: 0" Sump: 12.96" Step Position:

Position	Elev	Angle	Ext. (cw)	Pipe	Pipe OD	Connector	Hole	Horz Size	Up ()	Offset
Invert 1										
Invert 2										
Invert 3										
Invert 4										
Invert 5										
Invert 6										
Invert 7										
Invert 8										

RIGHT-SIDE UP VIEW (int. dimensions)



INSIDE WALL DIMENSIONS



Coating (Int):
 Coating (Ext):

Seam Up: Flat
 Seam Dn: Groove

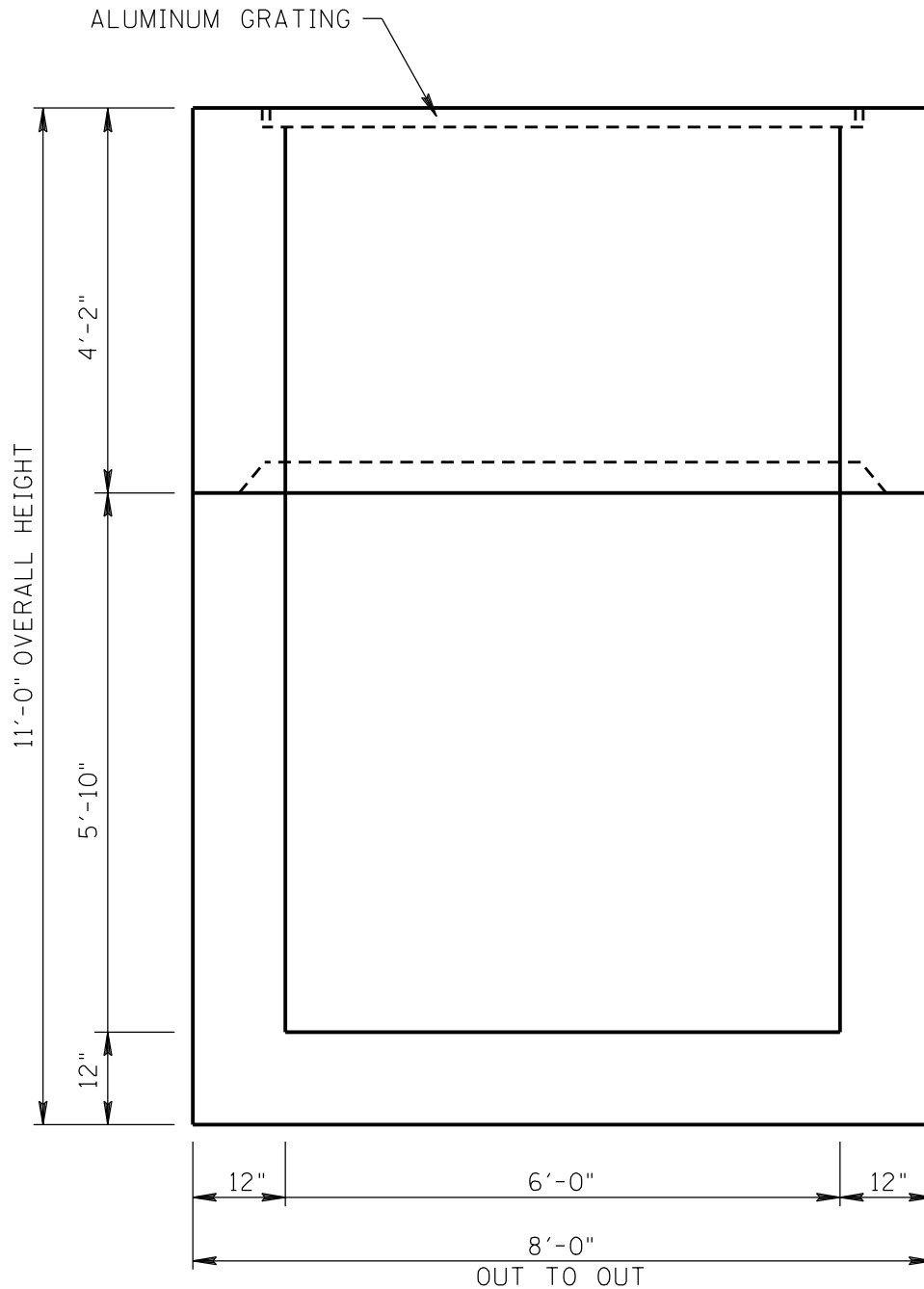
Wall Thickness: 12"
 Floor Height: 0"

Height (Int): 50"
 Height (Ext): 50"

Weight (Net): 16917 lb
 Volume (Net): 4.32cu.yd

NOTE: SEE "PRECAST VAULTS: DESIGN SUBMITTALS, CONCRETE COMPONENTS" SHEET FOR SUMMARY OF BUILDING AND DESIGN CODES, MATERIALS REQUIREMENTS, AND DESIGN LOADS.

NOTE: SEE ICASST WORKING DRAWINGS FOR ADDITIONAL INFORMATION.



TYPICAL ELEVATION VIEW

NOTE: SEE ICASST WORKING DRAWINGS FOR OPENING SIZES AND LOCATIONS

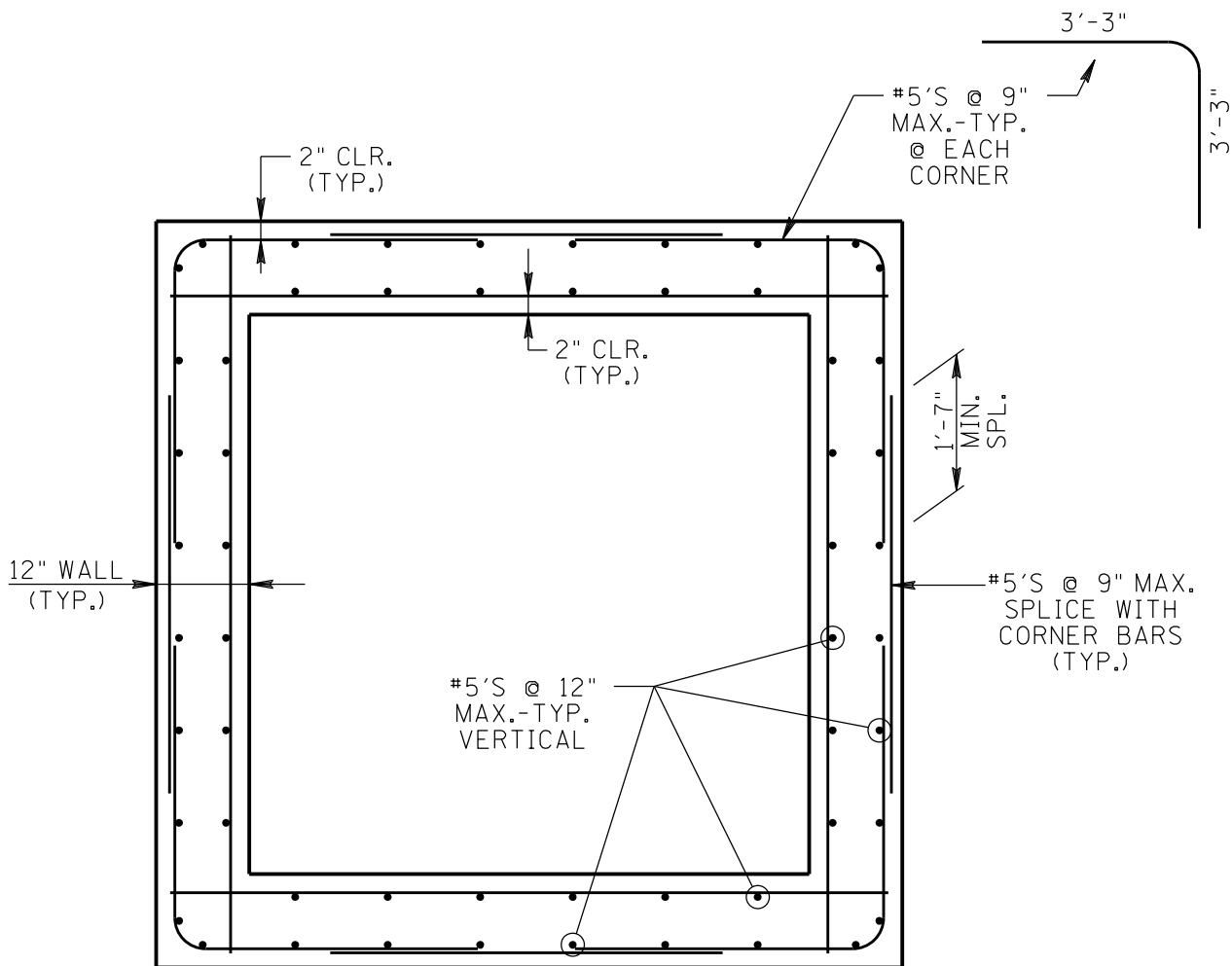
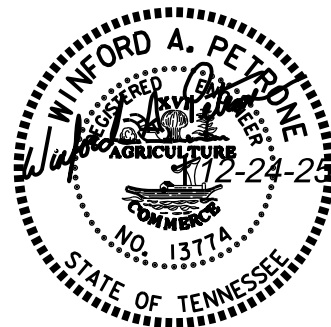
SK-1/4

6'-0" X 6'-0" PRECAST LIFT GATE STRUCTURE: GENERAL ELEVATION

HVUD WTP EXPANSION

NOTE: SEE "PRECAST VAULTS: DESIGN SUBMITTALS, CONCRETE COMPONENTS" SHEET FOR SUMMARY OF BUILDING AND DESIGN CODES, MATERIALS REQUIREMENTS, AND DESIGN LOADS.

NOTE: SEE ICAST WORKING DRAWINGS FOR ADDITIONAL INFORMATION.



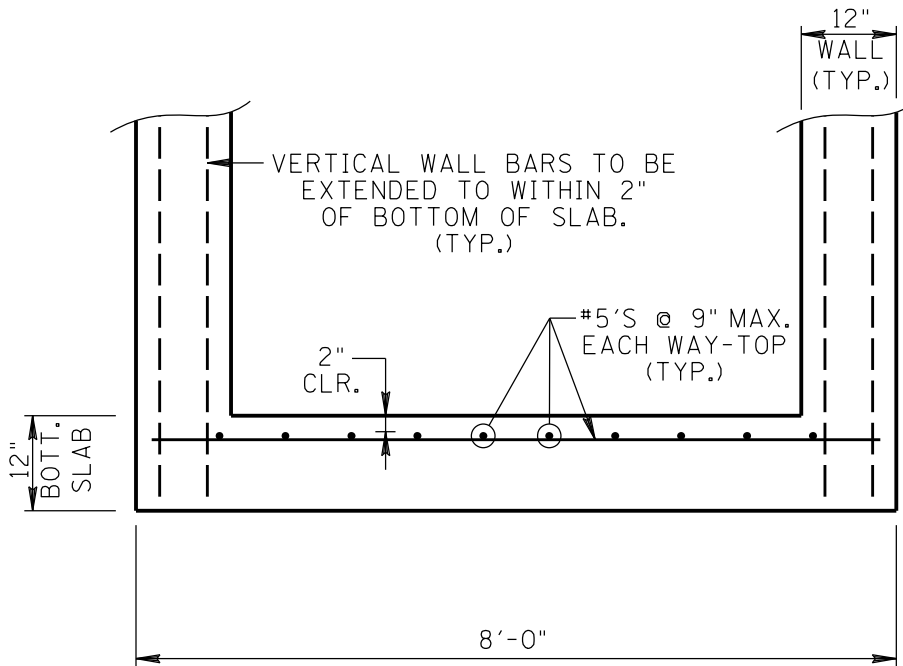
TYPICAL SECTION THRU WALL
SHOWING REINFORCEMENT

SK-2/4

6'-0"X6'-0" PRECAST LIFT GATE STRUCTURE: WALL SECTION
HVUD WTP EXPANSION

NOTE: SEE "PRECAST VAULTS: DESIGN SUBMITTALS, CONCRETE COMPONENTS" SHEET FOR SUMMARY OF BUILDING AND DESIGN CODES, MATERIALS REQUIREMENTS, AND DESIGN LOADS.

NOTE: SEE ICAST WORKING DRAWINGS FOR ADDITIONAL INFORMATION.



BOTTOM SLAB SECTION

SHOWING REINFORCEMENT

NOTE: HORIZONTAL WALL REINFORCEMENT NOT SHOWN FOR CLARITY.

SK-3/4

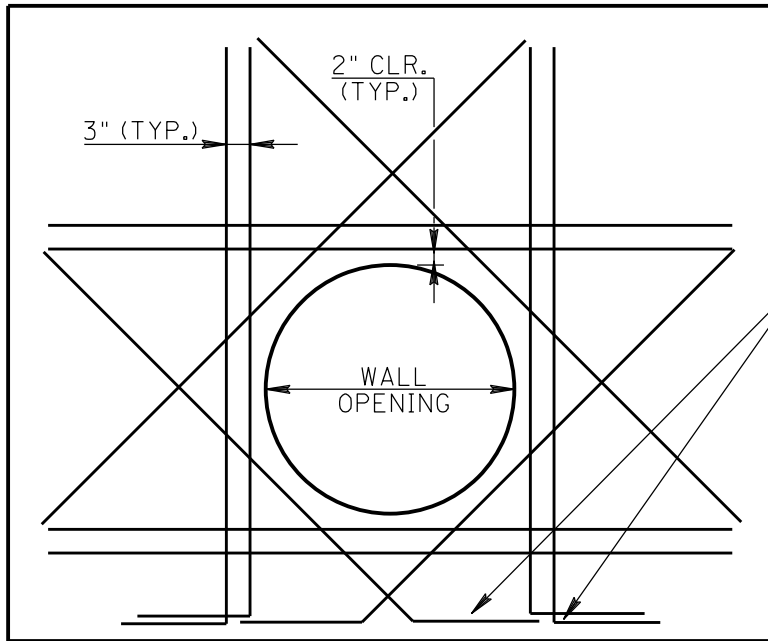
6'-0"X6'-0" PRECAST LIFT GATE STRUCTURE: BOTTOM SLAB
HVUD WTP EXPANSION

NOTE: SEE "PRECAST CONCRETE JUNCTION BOXES AND PRECAST BOX CULVERTS" SHEET FOR SUMMARY OF BUILDING AND DESIGN CODES, MATERIALS REQUIREMENTS, AND DESIGN LOADS.

NOTE: ICAST WORKING DRAWINGS FOR ADDITIONAL INFORMATION.



TOP OF
PRECAST



IF SPECIFIED LENGTHS
OF OPENING BARS
INTERSECT OUTSIDE
OF CONCRETE, BEND
THE ADD'L. OPENING
BARS TO FIT. (TYP.)

BOTT. OF
PRECAST

ADDITIONAL REINFORCEMENT @ WALL OPENINGS

ADDITIONAL REINFORCEMENT REQUIRED:

1. ALONG EACH SIDE OF OPENING:
2- #5'S HORIZONTAL TOP AND BOTTOM
AND 2-#5'S VERTICAL EACH SIDE
 2. DIAGONALLY:
1-#5 @ EACH FACE DIAGONALLY
(4 PER OPENING)
- LENGTH OF EACH ADDITIONAL BAR=HOLE DIA.
PLUS 5'-0", CENTER ADDITIONAL BARS
ON CENTER OF OPENINGS.

PROVIDE ADDITIONAL OPENING BARS NEAR INSIDE
AND OUTSIDE FACES AT EACH OPENING.

SK-4/4

6'-0"X6'-0" PRECAST LIFT GATE STRUCTURE: REINF. @ OPENINGS
HVUD WTP EXPANSION