

Job Name: 24-1357C KYTC Letting Call 107 (ID 241303)  
 Job Location: Morganfield, KY  
 Contractor: Cleary Construction, Inc.

Plant: Beaver Dam, KY  
 1/15/2026 10:48:53 AM

Tech: K. Cardwell  
 PC: C. Goff



**Structure ID: JB 1 (KYTC JB Ty A)**

**P2 BX024024-08LD08**

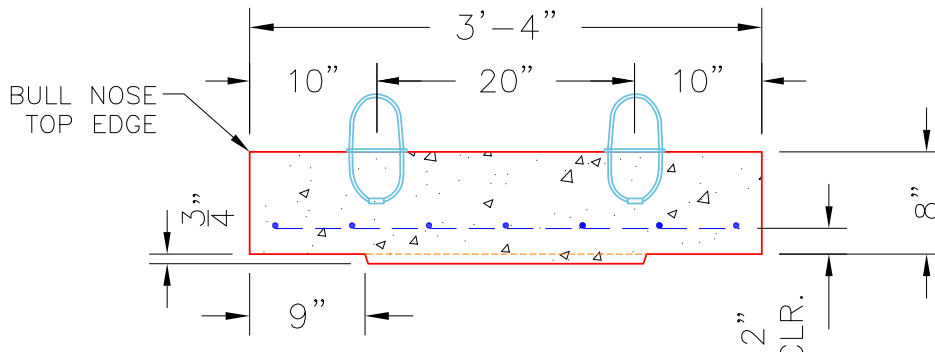
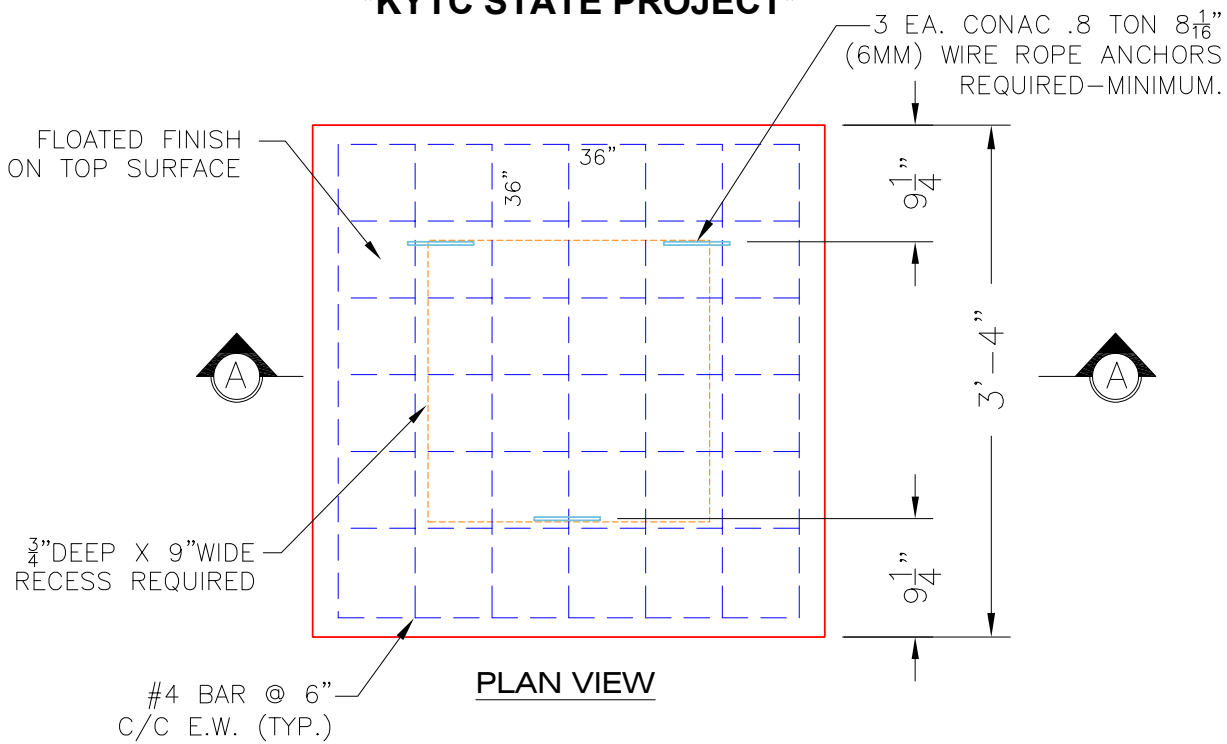
**CB FLAT TOP 8"W SOLID**

- P2) 24" x 24" - CB FLAT TOP 8"W SOLID - 8"
- P1) 24" x 24" - BOX BASE 8inW, 8inF, Variable Ht - 26"
- 1) 24" x 24" - SGL 1"x14.5' Butyl
- 1) Hole - 26
- 1) Hole - 22

1074 lb  
 2786 lb  
 0 lb  
 0 lb  
 0 lb  
 -----  
 Structure Total: 3860 lb

**Structure Notes:**  
 \*\*\*KYTC STATE PROJECT\*\*  
 1. KYTC JUNCTION BOX TYPE A / PER ASTM C-913 SPEC'S  
 2. CONCRETE: 5,000 PSI AT 28 DAYS  
 3. SOLID TOP SLAB - NO CASTING  
 4. REINFORCEMENT:  
 - SOLID TOP: #5 BAR @ 6" C.C. E.W. (GRADE 60)  
 - BASE: #5 BAR @ 12" C.C. E.W. (GRADE 60)

**\*KYTC STATE PROJECT\***



**NOTES:**

- CONCRETE: 4500 PSI @ 28 DAYS.
- MANUFACTURE TO KYTC SPECIFICATIONS.
- REINFORCING: #4 BAR @ 6" C/C E.W.-GRADE 60. (BOTTOM LAYER ONLY)
- 3 EA. CONAC WIRE LOOP LIFTERS REQUIRED.
- KYTC CERTIFICATIONS REQUIRED.

[#4 BAR CUT LIST](#)  
 14 EA. @ 36"

|                                  |                                |                    |                  |  |
|----------------------------------|--------------------------------|--------------------|------------------|--|
| Coating (Int):<br>Coating (Ext): | Seam Up: Flat<br>Seam Dn: Flat | Wall Thickness: 8" | Height (Ext): 8" | Weight (Net): 1074 lb<br>Volume (Net): 0.27cu.yd |
|----------------------------------|--------------------------------|--------------------|------------------|--|