

Job Name: 24-1260 - Combined Sewer Separation Project Ph 3
Job Location: Morganfield, KY 42437
Contractor: Deig Bros Lumber & Construction Co, Inc.

PC: J. Jarvis
 TECH: K. Cardwell
 Plant: Beaver Dam, KY

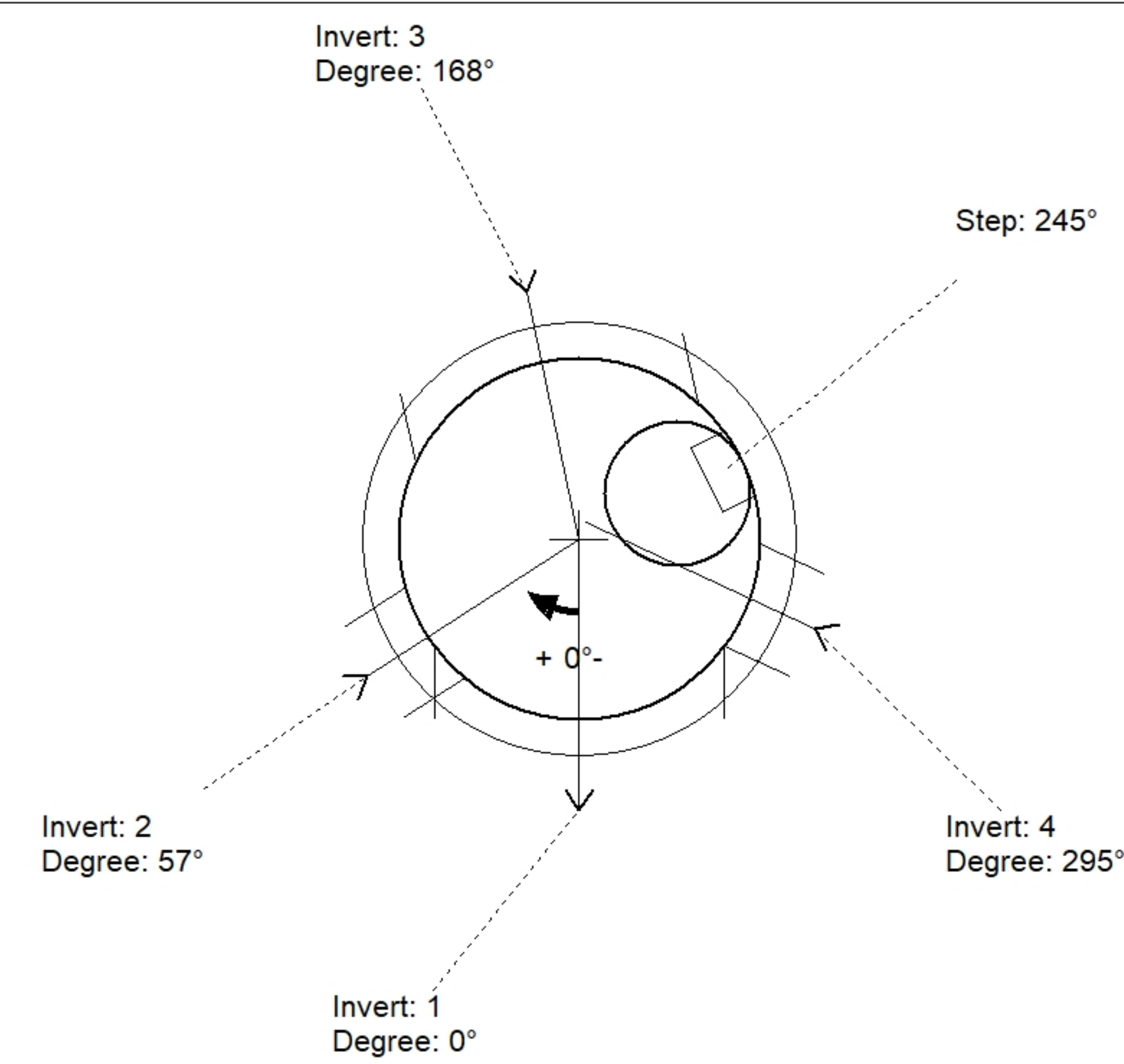


Structure ID: **STMH 9+62**
 Spec: KYTC Rim: 424.41' Sump: 0" Floor (Bot): 412.793'
 Type: MH B Invert: 413.96' Floor (Top): 413.46' Overall Height: 11.417'
 Size: 60" Rim to Invert: 10.45' Floor Height: 8" Slack: 2.4"

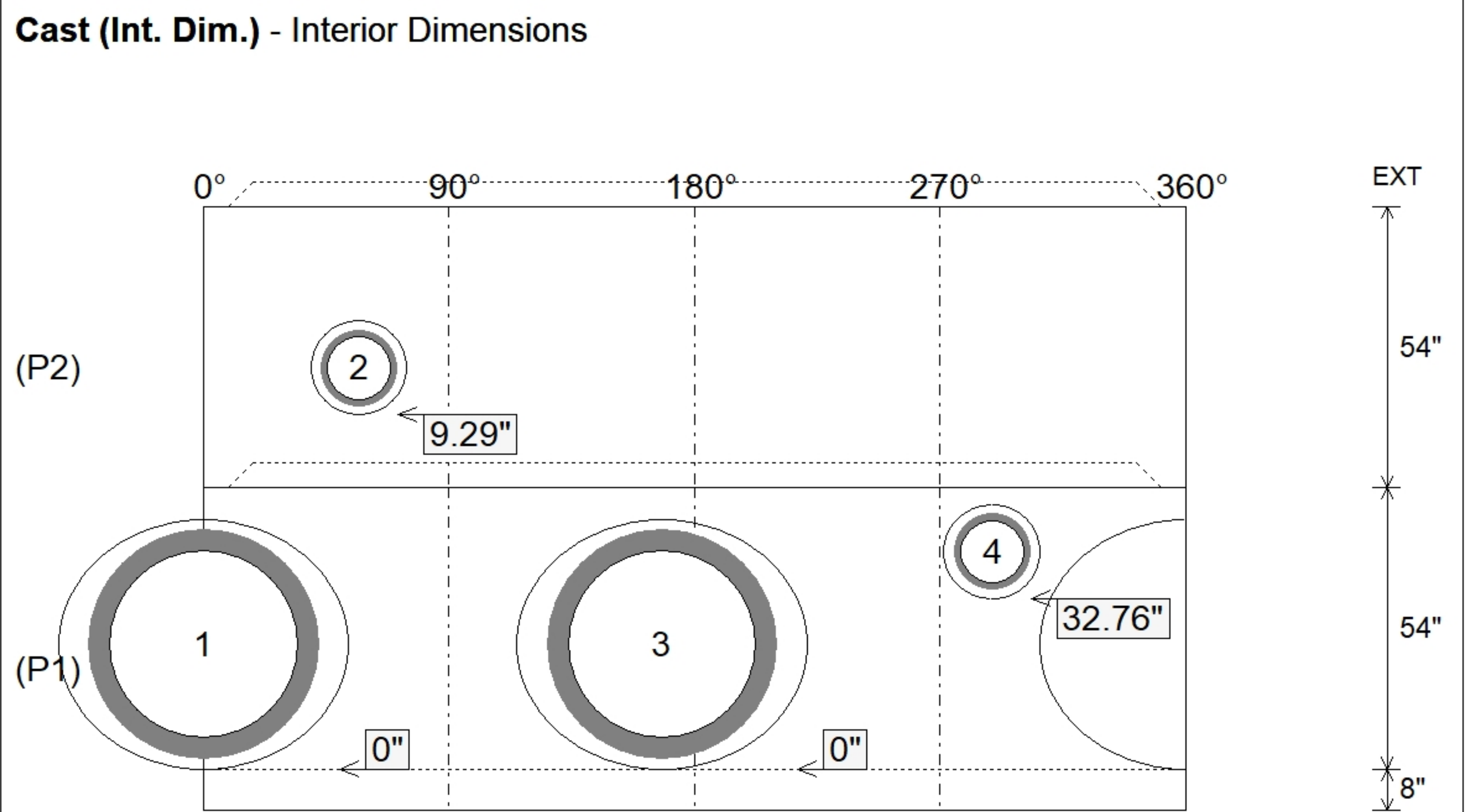
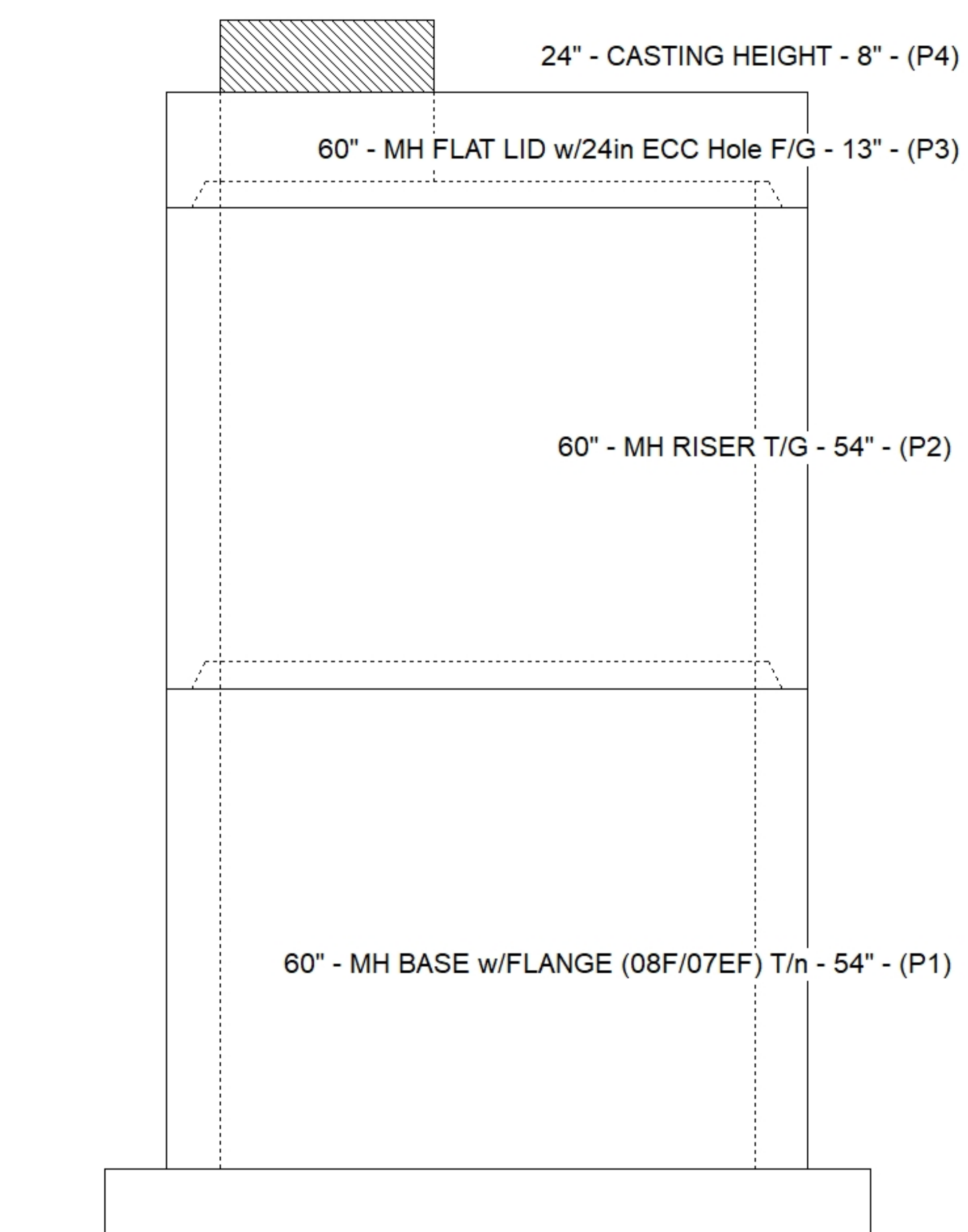
- Structure Notes:**
 STATION: 9+62 STORM LN A
 1. PER KYTC MH B / ASTM C-913 SPECS
 2. CONCRETE: 5,000 PSI AT 28 DAYS
 3. REINFORCEMENT:
 - FLAT LID: #5 BAR @ 6" C.C. E.W. (GRADE 60)
 - BASE & RISER: PER ASTM A615
 4. STORM INVERT BY OTHERS
 5. STEPS AT 245 DEGREES
 6. KY-510 FRAME & COVER SUPPLIED BY ICAST
 7. INVERT 4 OFFSET 3" FROM CENTER

STRUCTURE SUMMARY:

P4) 24" - CASTING HEIGHT - 8"	0 lb
P3) 60" - MH FLAT LID w/24in ECC Hole F/G - 13"	2800 lb
P2) 60" - MH RISER T/G - 54"	5507 lb
P1) 60" - MH BASE w/FLANGE (08F/07EF) T/n - 54"	7353 lb
1) 60" - EXT. FLG (60ø MH) 7"WD/8"THK	0 lb
1) CASTING - HOE KY-510 F/C (KY TY.2)	510 lb
2) 60" - Conseal CS-102 1.00"	0 lb
2) Hole - 48	0 lb
2) Hole - 18	0 lb
9) MH Step ML-10-TDS-NCR - 10"	0 lb
Structure Total:	16170 lb



Position	Elev	Angle	Pipe	Pipe OD	Hole	Connector	Up (")	Ref
Rim	424.41'							
Reducer								
Invert 1	413.96'	0°	36" RCP B WALL	44"	48"	Hole 48	0"	P1
Invert 2	419.38'	57°	12" HDPE	14.5"	18"	Hole 18	9.29"	P2
Invert 3	413.96'	168°	36" RCP B WALL	44"	48"	Hole 48	0"	P1
Invert 4	416.44'	295°	12" HDPE	14.5"	18"	Hole 18	32.76"	P1
Invert 5								
Invert 6								
Invert 7								
Invert 8								



Submittal Drawing
 10/13/2025 12:53:07 PM

SUBMITTAL
 APPROVED BY: