

Job Name: 24-1260 - Combined Sewer Separation Project Phase 3
 Job Location: Morganfield, KY 42437
 Contractor: Deig Bros Lumber & Construction Co, Inc.

Plant: Beaver Dam, KY
 10/7/2025 9:18:10 AM

Tech: K. Cardwell
 PC: A. Chambers



Structure ID: STMH 9+03

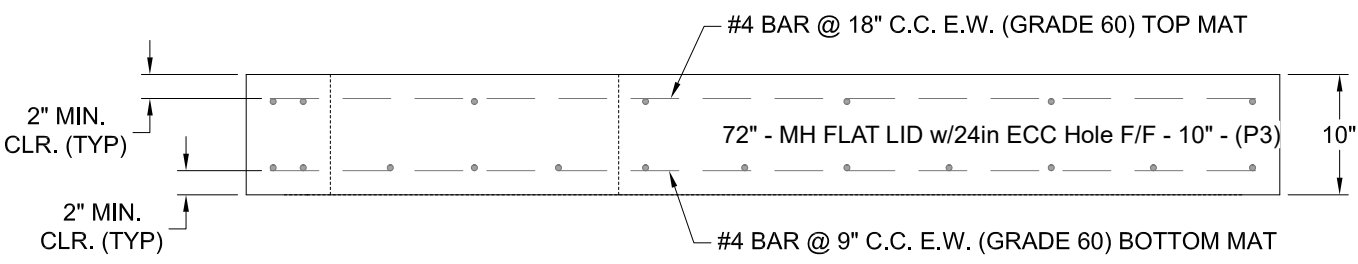
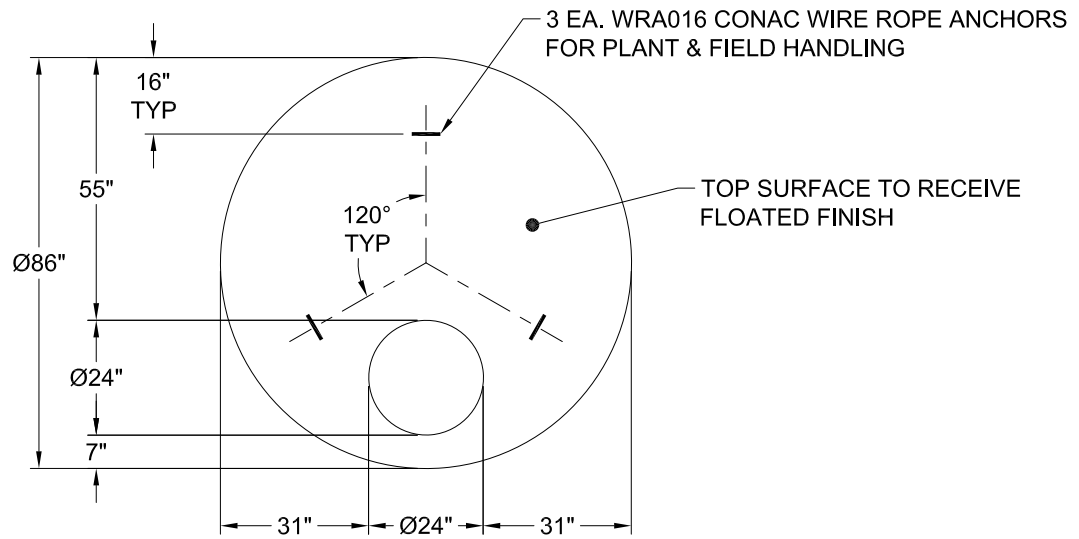
P3 MH072LD10-24ECC

MH FLAT LID w/24in ECC Hole F/F

- P4) 24" - CASTING HEIGHT - 8"
- P3) 72" - MH FLAT LID w/24in ECC Hole F/F - 10"
- P2) 72" - MH RISER Custom Ht F/G - 47"
- P1) 72" - MH BASE w/FLANGE (08F/14EF) T/n - 59"
- 1) 72" - EXT. FLG (72ø MH)14"WD/8"THK
- 1) CASTING - HOE KY-510 F/C (KY TY.2)
- 2) 72" - Conseal CS-102 1.00"
- 2) Hole - 48
- 1) Hole - 18
- 9) MH Step ML-10-TDS-NCR - 10"

	0 lb
	4495 lb
	6701 lb
	10209 lb
	2953 lb
	510 lb
	0 lb
	0 lb
	0 lb
	0 lb
Structure Total:	24868 lb

- Structure Notes:
 STATION: 9+03 STORM LN A
1. PER KYTC MH B / ASTM C-478 SPECS
 2. CONCRETE: 5,000 PSI AT 28 DAYS
 3. REINFORCEMENT - 2" MIN. REBAR CLEARANCE (TYP):
 - TOP MAT: #4 BAR @ 18" C.C. E.W. (GRADE 60)
 - BOTTOM MAT: #4 BAR @ 9" C.C. E.W. (GRADE 60)
 4. STORM INVERT BY OTHERS
 5. STEPS AT 275 DEGREES
 6. KY-510 FRAME & COVER SUPPLIED BY ICAST
 7. LIFTERS: 3 EA. WRA016 CONAC WIRE ROPE ANCHORS FOR PLANT & FIELD HANDLING



Coating (Int): Coating (Ext):	Seam Up: Flat Seam Dn: Flat	Wall Thickness: 7"	Height (Ext): 10"	Weight (Net): 4495 lb Volume (Net): 1.15cu.yd
----------------------------------	--------------------------------	--------------------	-------------------	--