

Job Name: 24-1260 - Combined Sewer Separation Project Phase 3
 Job Location: Morganfield, KY 42437
 Contractor: Deig Bros Lumber & Construction Co, Inc.

Plant: Beaver Dam, KY
 10/7/2025 9:05:08 AM

Tech: K. Cardwell
 PC: A. Chambers



Structure ID: STMH 9+03

P2 MH072RSVF

MH RISER Custom Ht F/G

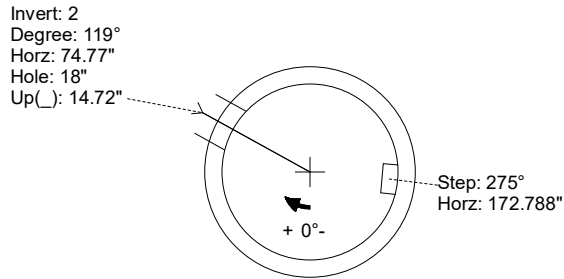
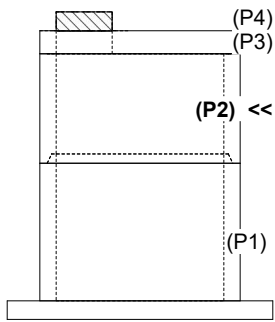
P4) 24" - CASTING HEIGHT - 8"	0 lb
P3) 72" - MH FLAT LID w/24in ECC Hole F/F - 10"	4495 lb
P2) 72" - MH RISER Custom Ht F/G - 47"	6701 lb
P1) 72" - MH BASE w/FLANGE (08F/14EF) T/n - 59"	10209 lb
1) 72" - EXT. FLG (72ø MH)14"WD/8"THK	2953 lb
1) CASTING - HOE KY-510 F/C (KY TY.2)	510 lb
2) 72" - Conseal CS-102 1.00"	0 lb
2) Hole - 48	0 lb
1) Hole - 18	0 lb
9) MH Step ML-10-TDS-NCR - 10"	0 lb
Structure Total:	24868 lb

Structure Notes:
 STATION: 9+03 STORM LN A
 1. PER KYTC MH B / ASTM C-478 SPECS
 2. CONCRETE: 5,000 PSI AT 28 DAYS
 3. REINFORCEMENT: PER ASTM A615
 4. STORM INVERT BY OTHERS
 5. STEPS AT 275 DEGREES
 6. KY-510 FRAME & COVER SUPPLIED BY ICAST

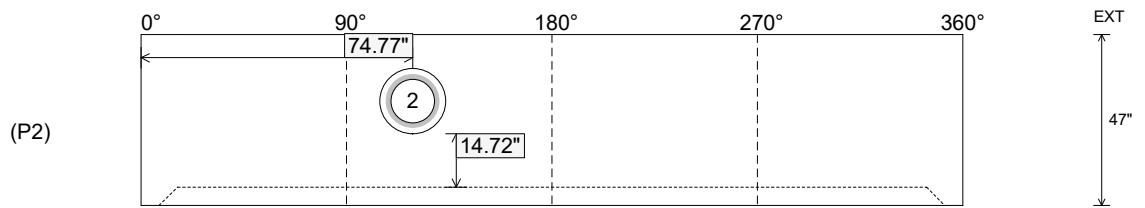
Rim: 423.56' Rim to Invert: 10.13' Slack: 3.56" Sump: 0" Step Position: 275

Position	Elev	Angle	Ext. (cw)	Pipe	Pipe OD	Connector	Hole	Horz Size	Up (⌋)	Offset
Invert 1										
Invert 2	419.74'	119°	89.308"	12" HDPE	14.5"	Hole 18	18"	18.193"	14.72"	0"
Invert 3										
Invert 4										
Invert 5										
Invert 6										
Invert 7										
Invert 8										

RIGHT-SIDE UP VIEW (int. dimensions)



INSIDE WALL DIMENSIONS



Coating (Int):
 Coating (Ext):

Seam Up: Flat
 Seam Dn: Groove

Wall Thickness: 7"
 Floor Height: 0"

Height (Int): 47"
 Height (Ext): 47"

Weight (Net): 6701 lb
 Volume (Net): 1.71cu.yd