

Job Name: 24-1260 - Combined Sewer Separation Project Ph 3
 Job Location: Morganfield, KY 42437
 Contractor: Deig Bros Lumber & Construction Co, Inc.

Plant: Beaver Dam, KY
 11/5/2025 2:08:33 PM

Tech: K. Cardwell
 PC: J. Jarvis



Structure ID: STMH 15+04

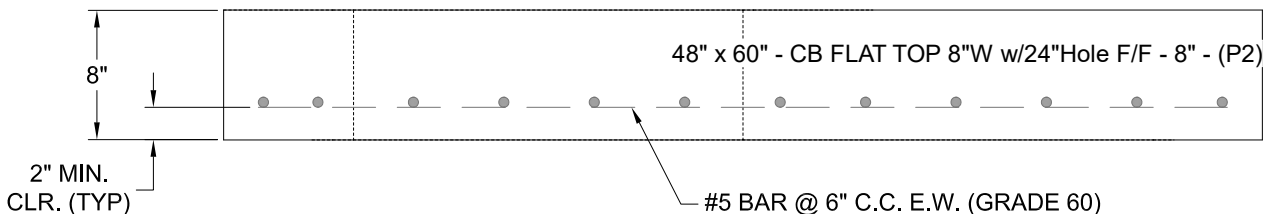
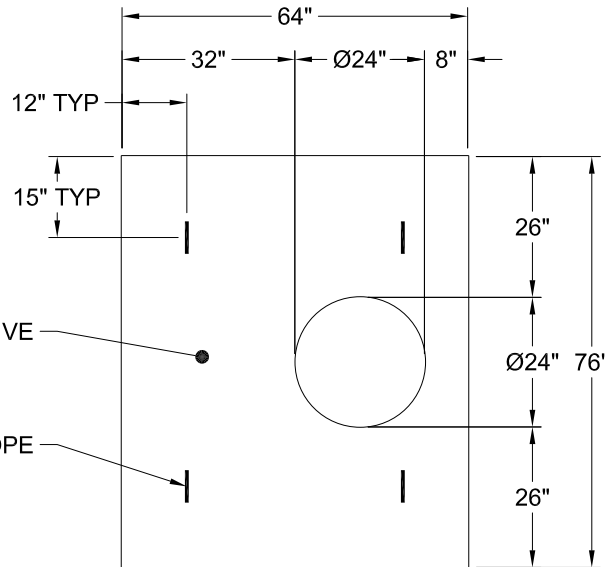
P2 BX04860-08LD08SP

CB FLAT TOP 8"W w/24"Hole F/F

- P3) 24" - CASTING HEIGHT - 7"
- P2) 48" x 60" - CB FLAT TOP 8"W w/24"Hole F/F - 8"
- P1) 48" x 60" - BX BASE w/FLANGE 08W/12F/08EF F/n - 65"
- 1) CASTING - HOE MCB-375-B F/Bar Grt
- 1) SECONDARY POUR
- 1) 48" x 60" - Conseal CS-102 1.00"
- 1) Hole - 48
- 1) Hole - 58 x 42
- 6) MH Step ML-10-TDS-NCR - 10"

0 lb
 2960 lb
 16037 lb
 250 lb
 0 lb
 0 lb
 0 lb
 0 lb
 0 lb
 0 lb
 Structure Total: 19247 lb

- Structure Notes:
 STATION: 15+04
1. PER KYTC MH C / ASTM C-913 SPECS
 2. CONCRETE: 5,000 PSI AT 28 DAYS
 3. REINFORCEMENT: #5 BAR @ 12" C.C. E.W. (GRADE 60) - 2" MIN. REBAR CLEARANCE (TYP)
 4. STEPS AT 270 DEGREES
 5. HOE MCB-375B FRAME & BAR GRATE SUPPLIED BY ICAST
 6. LIFTERS: 4 EA. WRA016 CONAC WIRE ROPE ANCHORS FOR PLANT & FIELD HANDLING



Coating (Int): Coating (Ext):	Seam Up: Flat Seam Dn: Flat	Wall Thickness: 8"	Height (Ext): 8"	Weight (Net): 2960 lb Volume (Net): 0.76cu.yd
----------------------------------	--------------------------------	--------------------	------------------	--