

Job Name: 24-1260 - Combined Sewer Separation Project Phase 3
 Job Location: Morganfield, KY 42437
 Contractor: Deig Bros Lumber & Construction Co, Inc.

Plant: Beaver Dam, KY
 10/7/2025 9:04:01 AM

Tech: K. Cardwell
 PC: A. Chambers



Structure ID: STMH 11+12

P1 MH060BAEVF

MH BASE w/FLANGE (08F/07EF) T/n

P4) 24" - CASTING HEIGHT - 8"	0 lb
P3) 60" - MH FLAT LID w/24in ECC Hole F/G - 13"	2800 lb
P2) 60" - MH RISER T/G - 36"	3758 lb
P1) 60" - MH BASE w/FLANGE (08F/07EF) T/n - 54"	6187 lb
1) 60" - EXT. FLG (60ø MH)7"WD/8"THK	1167 lb
1) CASTING - HOE KY-510 F/C (KY TY.2)	510 lb
2) 60" - Conseal CS-102 1.00"	0 lb
2) Hole - 48	0 lb
1) Hole - 18	0 lb
7) MH Step ML-10-TDS-NCR - 10"	0 lb
Structure Total:	14422 lb

Structure Notes:
 STATION: 11+12 STORM LN A
 1. PER KYTC MH B / ASTM C-478 SPECS
 2. CONCRETE: 5,000 PSI AT 28 DAYS
 3. REINFORCEMENT: PER ASTM A615
 4. STORM INVERT BY OTHERS
 5. STEPS AT 90 DEGREES
 6. KY-510 FRAME & COVER SUPPLIED BY ICAST

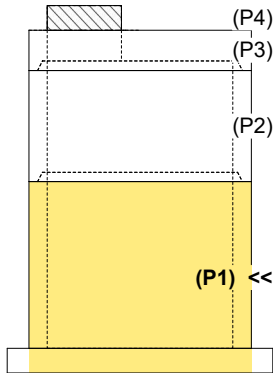
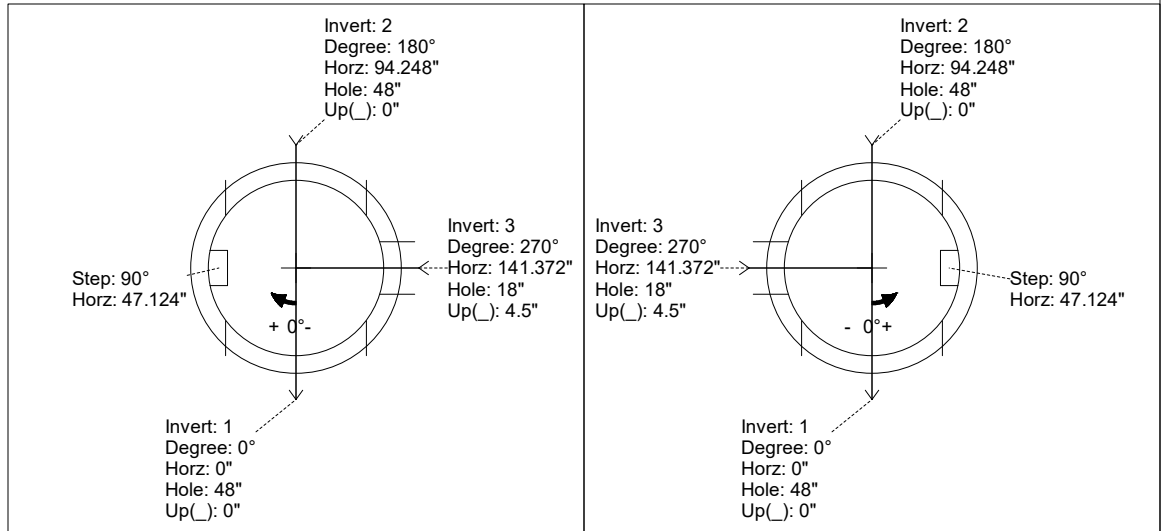
FIRST POUR (BASE): 6,187 LBS
SECOND POUR (EXT. FLANGE): 1,167 LBS

Rim: 424.3' Rim to Invert: 9.07' Slack: 3.84" Sump: 0" Step Position: 90°

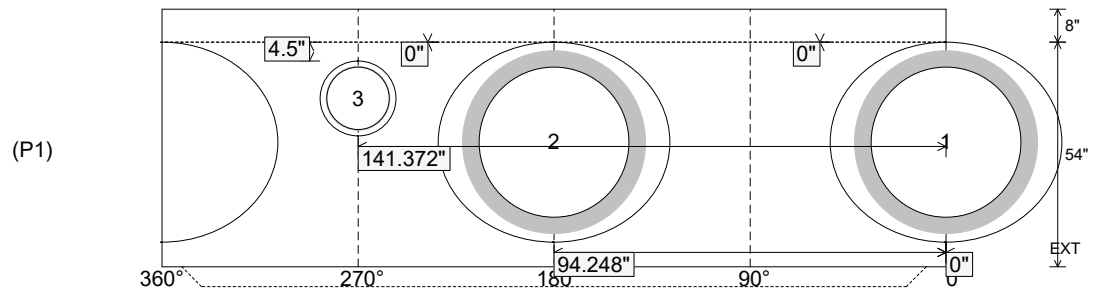
Position	Elev	Angle	Ext. (cw)	Pipe	Pipe OD	Connector	Hole	Horz Size	Up ()	Offset
Invert 1	415.23'	0°	0"	36" RCP B WALL	44"	Hole 48	48"	55.638"	0"	0"
Invert 2	415.23'	180°	113.097"	36" RCP B WALL	44"	Hole 48	48"	55.638"	0"	0"
Invert 3	415.23'	270°	169.646"	15" PVC SDR35	15.3"	Hole 18	18"	18.282"	4.5"	0"
Invert 4										
Invert 5										
Invert 6										
Invert 7										
Invert 8										

RIGHT-SIDE UP VIEW (int. dimensions)

UPSIDE-DOWN VIEW (int. dimensions)



INSIDE WALL DIMENSIONS



Coating (Int):
 Coating (Ext):

Seam Up: Tongue
 Seam Dn: n/a

Wall Thickness: 6"
 Floor Height: 8"

Height (Int): 54"
 Height (Ext): 62"

Weight (Net): 7354 lb
 Volume (Net): 1.88cu.yd

Job Name: 24-1260 - Combined Sewer Separation Project Phase 3
 Job Location: Morganfield, KY 42437
 Contractor: Deig Bros Lumber & Construction Co, Inc.

Plant: Beaver Dam, KY

Tech: K. Cardwell

10/7/2025 9:04:01 AM

PC: A. Chambers



Structure ID: STMH 11+12

P1 MH060EXBAP

7" EXTENDED FLANGE POUR

- P4) 24" - CASTING HEIGHT - 8"
- P3) 60" - MH FLAT LID w/24in ECC Hole F/G - 13"
- P2) 60" - MH RISER T/G - 36"
- P1) 60" - MH BASE w/FLANGE (08F/07EF) T/n - 54"
- 1) 60" - EXT. FLG (60ø MH)7"WD/8"THK
- 1) CASTING - HOE KY-510 F/C (KY TY.2)
- 2) 60" - Conseal CS-102 1.00"
- 2) Hole - 48
- 1) Hole - 18
- 7) MH Step ML-10-TDS-NCR - 10"

0 lb
 2800 lb
 3758 lb
 6187 lb
 1167 lb
 510 lb
 0 lb
 0 lb
 0 lb
 0 lb
 Structure Total: 14422 lb

- Structure Notes:**
 STATION: 11+12 STORM LN A
1. PER KYTC MH B / ASTM C-478 SPECS
 2. CONCRETE: 5,000 PSI AT 28 DAYS
 3. REINFORCEMENT: DRILL & DOWEL #5 BAR @ 8" C.C. E.W. (GRADE 60) FOR FLANGE POUR TIE-IN - MIN. 4" PENETRATION INTO BASE FLOOR & 2" MIN. REBAR CLEARANCE (TYP)
 4. STORM INVERT BY OTHERS
 5. STEPS AT 90 DEGREES
 6. KY-510 FRAME & COVER SUPPLIED BY ICAST
 7. LIFTERS: 3 EA. WRA016 CONAC WIRE ROPE ANCHORS FOR PLANT & FIELD HANDLING

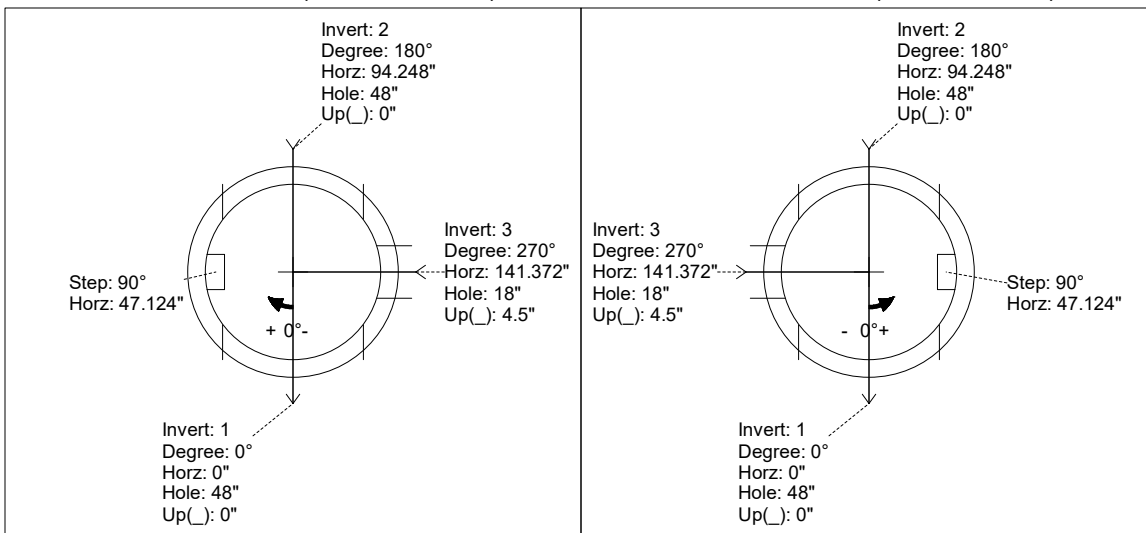
FIRST POUR (BASE): 6,187 LBS
SECOND POUR (EXT. FLANGE): 1,167 LBS

Rim: 424.3' Rim to Invert: 9.07' Slack: 3.84" Sump: 0" Step Position: 90°

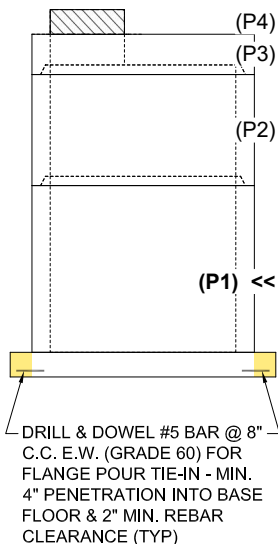
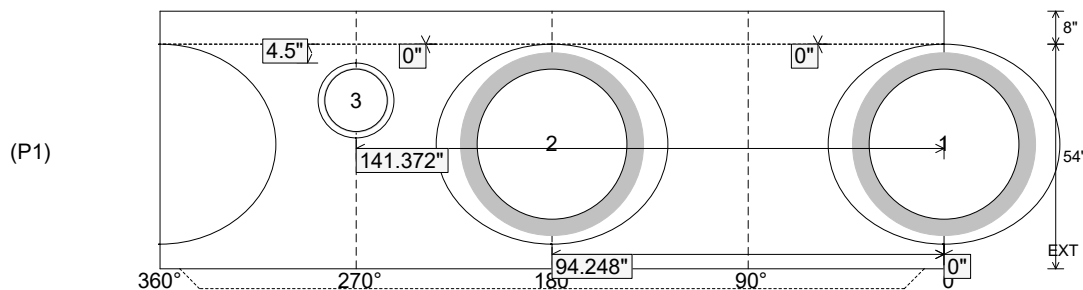
Position	Elev	Angle	Ext. (cw)	Pipe	Pipe OD	Connector	Hole	Horz Size	Up (↓)	Offset
Invert 1	415.23'	0°	0"	36" RCP B WALL	44"	Hole 48	48"	55.638"	0"	0"
Invert 2	415.23'	180°	113.097"	36" RCP B WALL	44"	Hole 48	48"	55.638"	0"	0"
Invert 3	415.23'	270°	169.646"	15" PVC SDR35	15.3"	Hole 18	18"	18.282"	4.5"	0"
Invert 4										
Invert 5										
Invert 6										
Invert 7										
Invert 8										

RIGHT-SIDE UP VIEW (int. dimensions)

UPSIDE-DOWN VIEW (int. dimensions)



INSIDE WALL DIMENSIONS



Coating (Int): Coating (Ext):	Seam Up: Tongue Seam Dn: n/a	Wall Thickness: 6" Floor Height: 8"	Height (Int): 54" Height (Ext): 62"	Weight (Net): 7354 lb Volume (Net): 1.88cu.yd
----------------------------------	---------------------------------	--	--	--