

Job Name: 24-1260 - Combined Sewer Separation Project Ph 3  
 Job Location: Morganfield, KY 42437  
 Contractor: Deig Bros Lumber & Construction Co, Inc.

Plant: Beaver Dam, KY

Tech: K. Cardwell

12/18/2025 9:47:51 AM

PC: J. Jarvis



**Structure ID: STMH 1+72**

**P2 MH048LD12ECC**

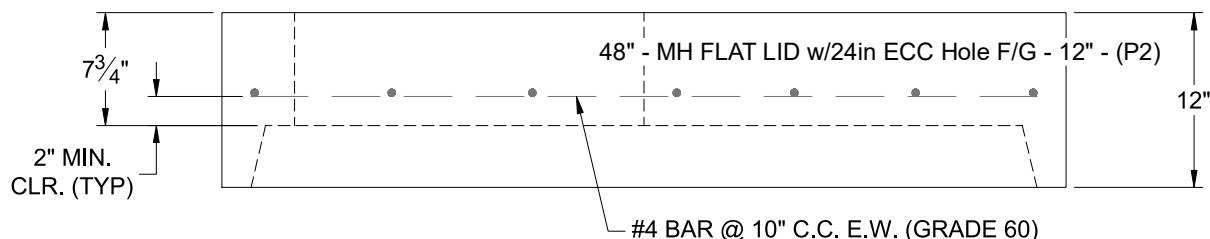
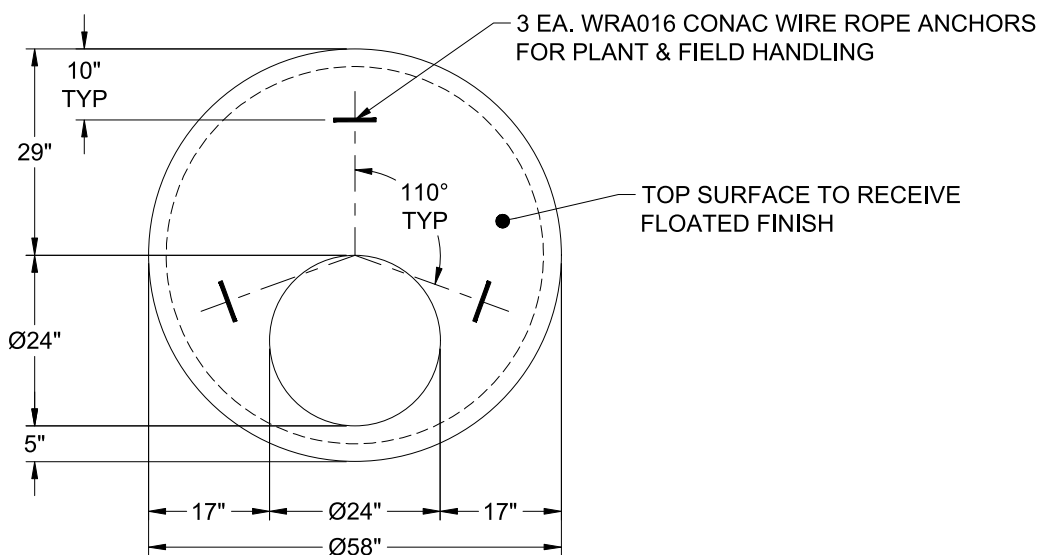
**MH FLAT LID w/24in ECC Hole F/G**

- P3) 24" - CASTING HEIGHT - 8"
- P2) 48" - MH FLAT LID w/24in ECC Hole F/G - 12"
- P1) 48" - MH BASE w/FLANGE (08F/08EF) T/n - 24"
- 1) CASTING - HOE KY-510 F/C (KY TY.2)
- 1) 48" - Conseal CS-102 1.00"
- 2) Hole - 18
- 2) MH Step ML-10-TDS-NCR - 10"

- 0 lb
- 1561 lb
- 4346 lb
- 510 lb
- 0 lb
- 0 lb
- 0 lb
- 0 lb

Structure Total: 6417 lb

- Structure Notes:**  
 STATION: 1+72 STORM LN F
1. PER KYTC MH B / ASTM C-478 SPECS
  2. CONCRETE: 5,000 PSI AT 28 DAYS
  3. REINFORCEMENT: #4 BAR @ 10" C.C. E.W. (GRADE 60) - 2" MIN. REBAR CLEARANCE (TYP)
  4. STORM INVERT BY OTHERS
  5. STEPS AT 270 DEGREES
  6. KY-510 FRAME & COVER SUPPLIED BY ICAST
  7. LIFTERS: 3 EA. WRA016 CONAC WIRE ROPE ANCHORS FOR PLANT & FIELD HANDLING



Coating (Int):  
 Coating (Ext):

Seam Up: Flat  
 Seam Dn: Groove

Wall Thickness: 5"

Height (Ext): 12"

Weight (Net): 1561 lb  
 Volume (Net): 0.4cu.yd