

Job Name: 23-3015C Chapel Hill WWTP
 Job Location: Chapel Hill, TN
 Contractor: Smith Contractors, Inc.

Plant: Beaver Dam

12/16/2025 8:17:30 AM

Tech: J. Coppage

PC: E. Bradley



Structure ID: 60IN SANITARY MANHOLE

P1 MH060DHFCDARED

MH DH RISER Custom Ht, w/ConBlock-CDA Red

- P3) 24" - CASTING HEIGHT - 7"
- P2) 60" - MH FLAT TOP w/24" Hole ECC w/ConBlock-CDA Red - 13"
- P1) 60" - MH DH RISER Custom Ht, w/ConBlock-CDA Red - 69"
- 1) JOINT WRAP - 0.065"x6"x50' CONSEAL CS212
- 1) JOINT WRAP PRIMER - CONSEAL CS-75 (1 gal.)
- 1) 60" - Conseal CS-102 1.00" (Double)
- 2) DOGHOUSE - 16"x16"
- 6) MH Step ML-10-TDS-NCR - 10"

- Structure Notes:
1. JBS-1140M W/ VENTED COVER BY ICAST.
 2. PER ASTM C478 SPECIFICATIONS.
 3. CONCRETE = 4,000 PSI AT 28 DAYS.
 4. REINFORCING PER ASTM A615 (GRADE 60).
 - TOP SLAB (As .62) #5 BARS AT 6" C.C.E.W.
 - RISER/WALLS (As .18)
 5. STEPS AT 270 DEGREES

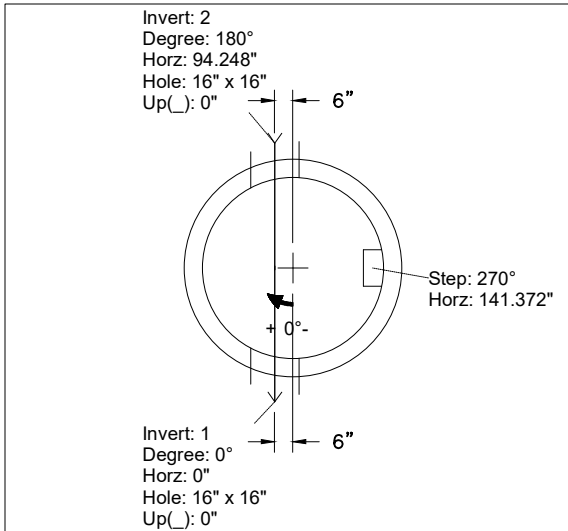
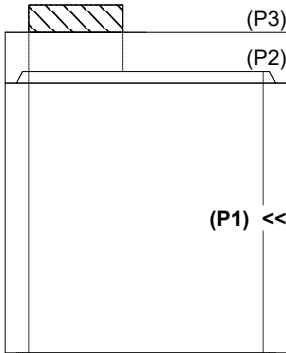
Structure Total: 9766 lb

Rim: 7.25' Rim to Invert: 7.25' Slack: 0" Sump: 2" Step Position: 270°

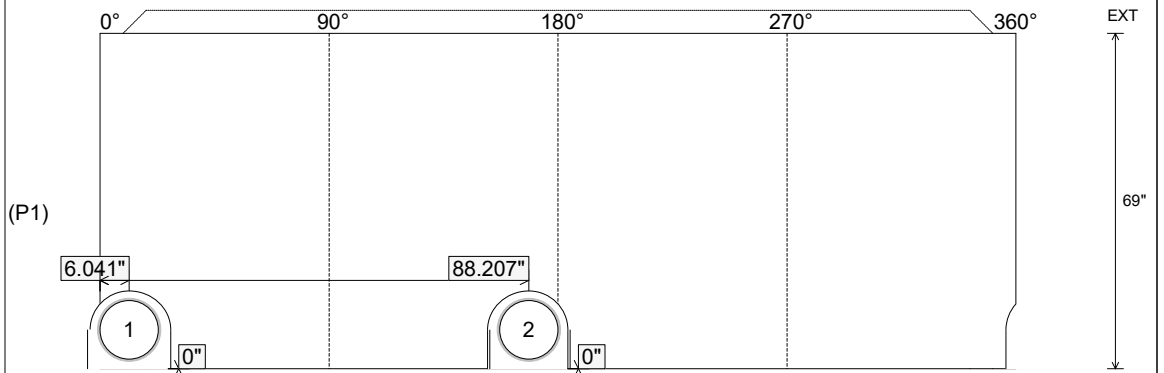
Position	Elev	Angle	Ext. (cw)	Pipe	Pipe OD	Connector	Hole	Horz Size	Up (↓)	Offset
Invert 1	0'	0°	6.028"	12" DI	13"	DOGHOUSE 16"x16"	16" x 16"	16.567"	0"	6"
Invert 2	0'	180°	107.069"	12" DI	13"	DOGHOUSE 16"x16"	16" x 16"	16.567"	0"	-6"
Invert 3										
Invert 4										
Invert 5										
Invert 6										
Invert 7										
Invert 8										

RIGHT-SIDE UP VIEW (int. dimensions)

UPSIDE-DOWN VIEW (int. dimensions)



INSIDE WALL DIMENSIONS



Coating (Int):
 Coating (Ext):

Seam Up: Tongue
 Seam Dn: Flat

Wall Thickness: 6"
 Floor Height: 0"

Height (Int): 69"
 Height (Ext): 69"

Weight (Net): 6966 lb
 Volume (Net): 1.78cu.yd

Job Name: 23-3015C Chapel Hill WWTP
 Job Location: Chapel Hill, TN
 Contractor: Smith Contractors, Inc.

Plant: Beaver Dam

Tech: J. Coppage

12/16/2025 8:17:43 AM

PC: E. Bradley



Structure ID: 60IN SANITARY MANHOLE

P2 MH060LD13CDARED

MH FLAT TOP w/24" Hole ECC w/ConBlock-CDA Red

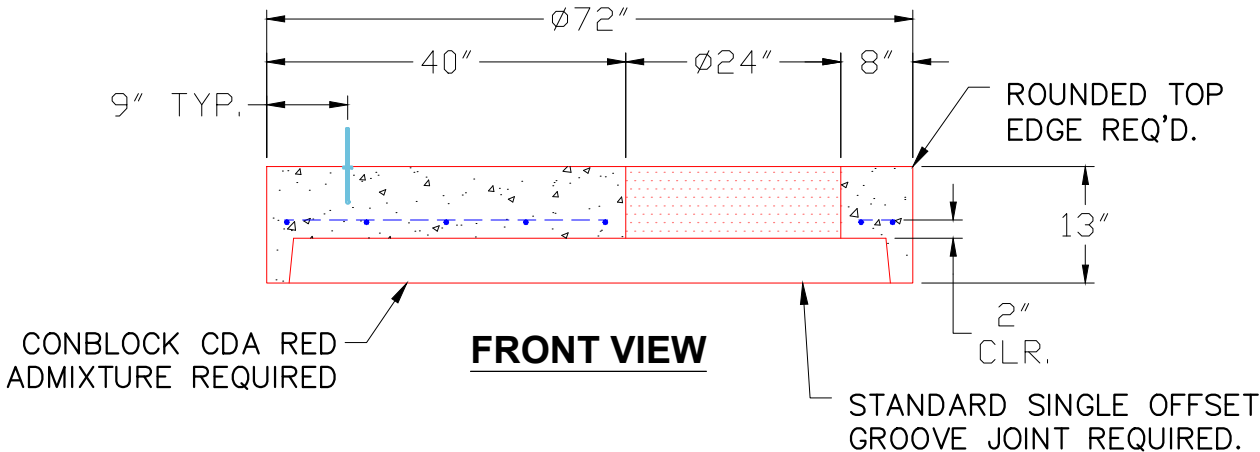
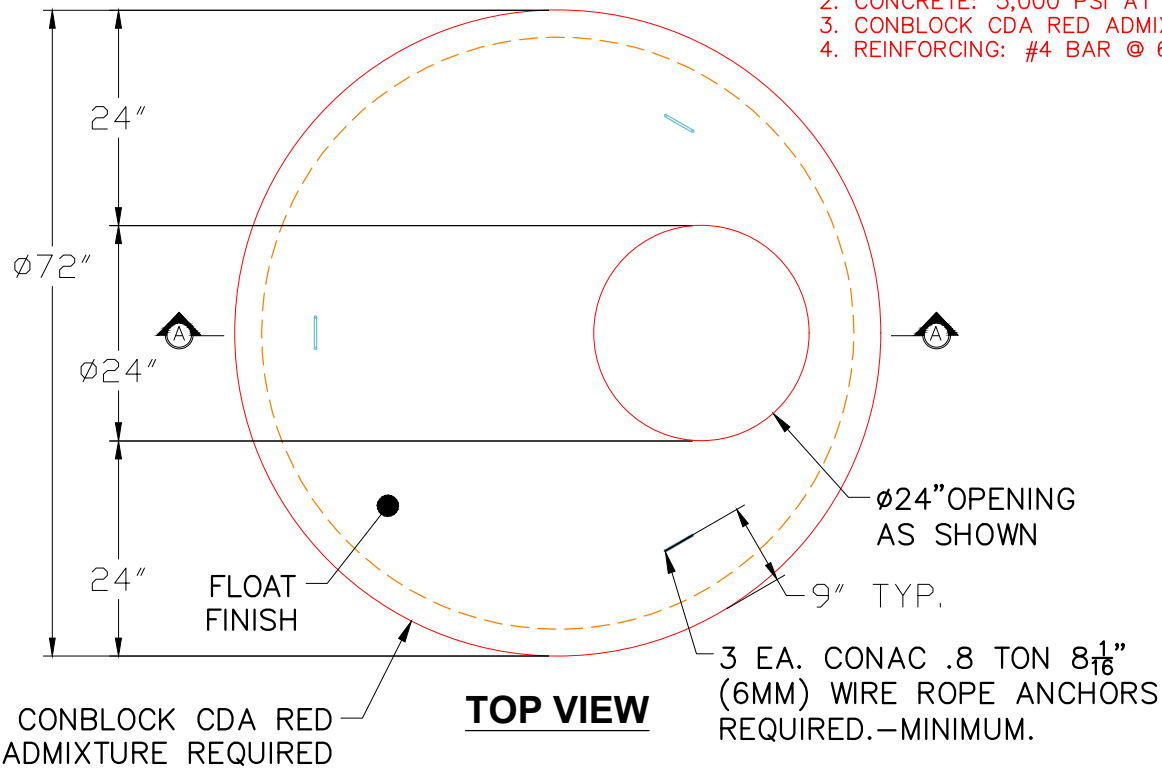
- P3) 24" - CASTING HEIGHT - 7"
- P2) 60" - MH FLAT TOP w/24" Hole ECC w/ConBlock-CDA Red - 13"
- P1) 60" - MH DH RISER Custom Ht, w/ConBlock-CDA Red - 69"
- 1) JOINT WRAP - 0.065"x6"x50' CONSEAL CS212
- 1) JOINT WRAP PRIMER - CONSEAL CS-75 (1 gal.)
- 1) 60" - Conseal CS-102 1.00" (Double)
- 2) DOGHOUSE - 16"x16"
- 6) MH Step ML-10-TDS-NCR - 10"

- Structure Notes:
1. JBS-1140M W/ VENTED COVER BY ICAST.
 2. PER ASTM C478 SPECIFICATIONS.
 3. CONCRETE = 4,000 PSI AT 28 DAYS.
 4. REINFORCING PER ASTM A615 (GRADE 60).
 - TOP SLAB (As .62) #5 BARS AT 6" C.C.E.W.
 - RISER/WALLS (As .18)
 5. STEPS AT 270 DEGREES

Structure Total: 9766 lb

NOTES:

1. MANUFACTURED TO ASTM C-478 (LATEST REVISION).
2. CONCRETE: 5,000 PSI AT 28 DAYS.
3. CONBLOCK CDA RED ADMIXTURE REQUIRED.
4. REINFORCING: #4 BAR @ 6" O.C. E.W. (GRADE 60).



Coating (Int): Coating (Ext):	Seam Up: Flat Seam Dn: Groove	Wall Thickness: 6"	Height (Ext): 13"	Weight (Net): 2800 lb Volume (Net): 0.69cu.yd
----------------------------------	----------------------------------	--------------------	-------------------	--