

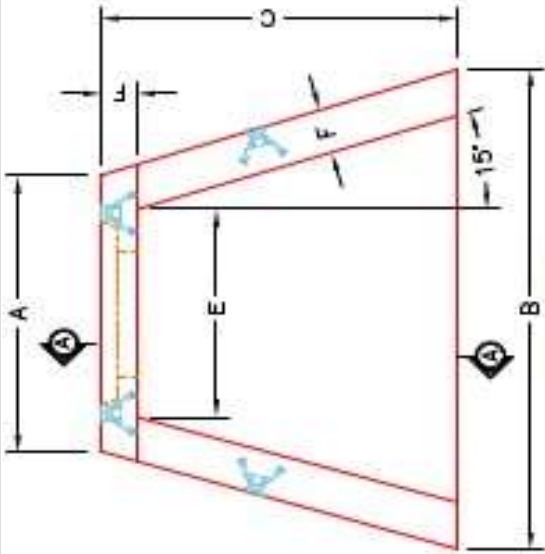


Structure ID: STM-E1

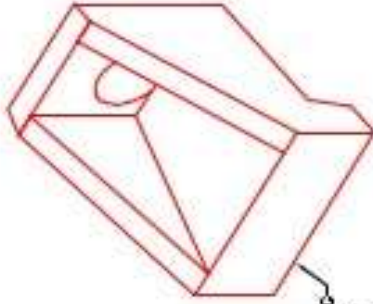
P1 HAW15F

15" - HW AW w/FLAT BOTTOM

DIMENSIONS & QUANTITIES									
TYPE	PIPE Ø	A	B	C	D	E	F	G	WEIGHT
AW	15"	2'-8"	4'-0"	2'-6"	2'-2"	2'-0"	6"	0"	1,380 LBS.

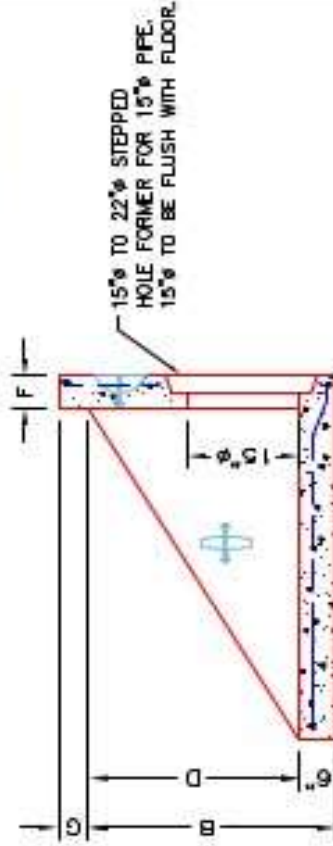


PLAN VIEW

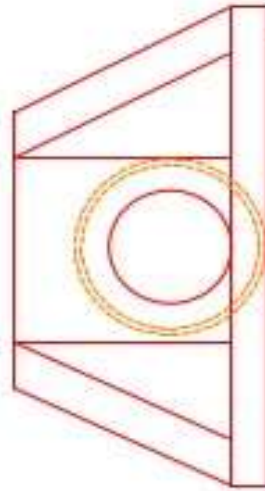


ISOMETRIC VIEW

WITH FOOTING
(SEE DETAIL)



SECTION A-A



FRONT ELEVATION

NOTES:

1. CONCRETE: 4500 PSI AT 28 DAYS MIN. STRENGTH.
2. REINFORCING: #4 BAR @ 12" C/C E.W. - GRADE 60, (WITH 2" CONCRETE COVER MINIMUM)
3. REINFORCING BARS TO BE TACK WELDED OR TIED.

PRODUCTION WORK ORDER

QUALITY CONTROL CHECKLIST

- ALL DIMENSIONS CORRECT.
- LIFTERS INSTALLED.
- STEPPED HF CORRECT SIZE.
- REINFORCING CORRECT.
- CLEARANCE ON REINFORCING CORRECT.
- EDGES CHAMFERED.
- ALL PATCHWORK ACCEPTABLE.



DESCRIPTION: AW WINGED HEADWALL FOR 15" PIPE
CUSTOMER: STOCK
PROJECT: STOCK
STRUCTURE ID: STOCK
SALES ORDER NO: T.B.D.
CHECK: A. WELLS
DRAWING: J. HORSLEY
DATE: 09/25/24
SCALE: NTS
PG. 1 of 1

PRODUCT I.D.: HAW15F	DESCRIPTION: AW WINGED HEADWALL FOR 15" PIPE
PRODUCT VIEW: RIGHT SIDE UP	CUSTOMER: STOCK
PLANT: BEAVER DAM, KY.	PROJECT: STOCK
WEIGHT: 1,630 LBS.	STRUCTURE ID: STOCK
TOP SECTION JOINT: N/A	SALES ORDER NO: T.B.D.
BASE SECTION JOINT: N/A	CHECK: A. WELLS
QC CHECK INITIALS:	DRAWING: J. HORSLEY
	DATE: 09/25/24
	SCALE: NTS
	PG. 1 of 1