

Job Name: 23-2792 - Teal Dr. Development
 Job Location: Gallatin, TN
 Contractor: Stewart Richey

Plant: 100
 3/25/2026 1:42:49 PM

Tech: J. Horsley - F
 PC: C. Goff

Structure ID: STM-D2

P2 MH048LD06SP

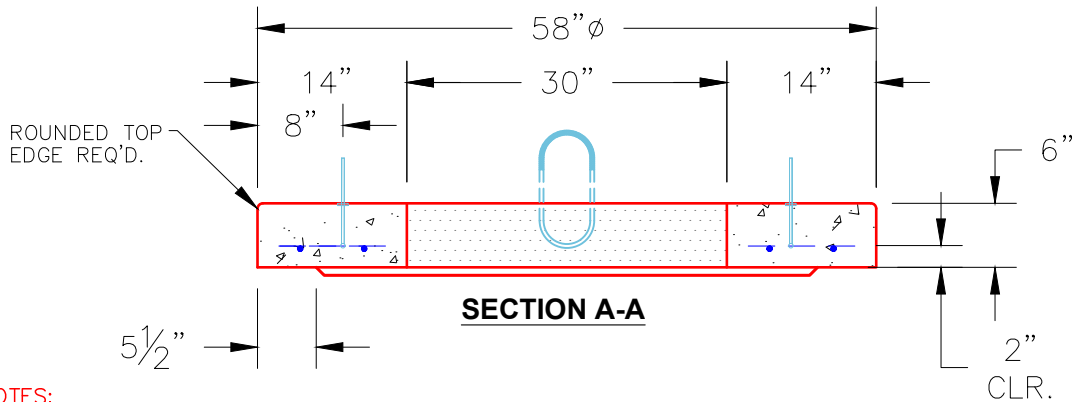
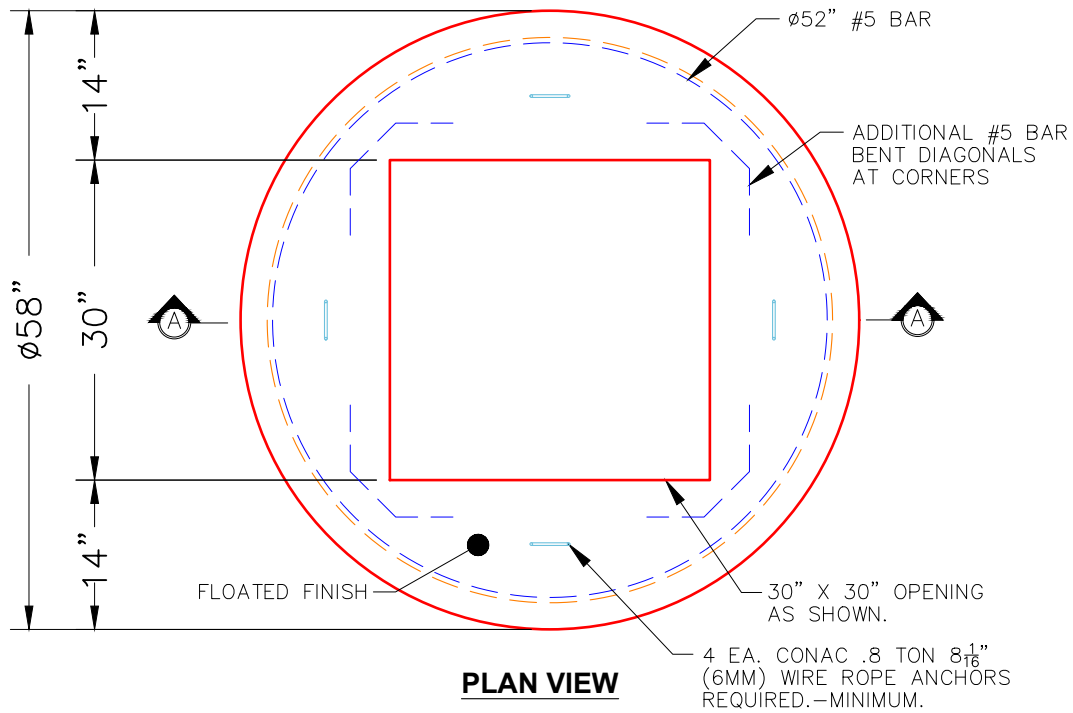
MH FLAT TOP SPEC. HT. (6") w/30"x30" Hole F/F

- P3) 24" x 30" - CASTING HEIGHT - 6"
- P2) 48" - MH FLAT TOP SPEC. HT. (6") w/30"x30" Hole F/F - 6"
- P1) 48" - MH BASE Custom Ht F/n - 35"
- 1) CASTING - JBS 3101 Single Set (F/G/H)
- 1) 48" - Conseal CS-102 1.00"
- 1) 24" x 30" - Conseal CS-102 1.00"
- 2) Hole - 32
- 3) MH Step ML-10-TDS-NCR - 10"

0 lb
 968 lb
 3048 lb
 619 lb
 0 lb
 0 lb
 0 lb
 0 lb
 0 lb
 Structure Total: 4635 lb

Structure Notes:
 1. PER ASTM C478 SPECIFICATIONS.
 2. CONCRETE = 4,000 PSI AT 28 DAYS.
 3. NO INVERT CHANNEL.
 4. CASTING BY ICAST (JBS 3101 SINGLE SET (F/G/H))

REINFORCING PER ASTM A615 (GRADE 60).
 - TOP SLAB (As .62) #5 BARS AT 6" C.C.E.W..
 - RISER/WALLS (As .12)
 - FLOOR (As .31) #5 BARS AT 12" C.C.E.W.



- NOTES:**
1. MANUFACTURED TO ASTM C-478 (LATEST REVISION).
 2. CONCRETE: 4,000 PSI AT 28 DAYS.
 3. REINFORCING: #5 BAR @ 6" O.C. E.W. (GRADE 60).

Coating (Int): Coating (Ext):	Seam Up: Flat Seam Dn: Flat	Wall Thickness: 5"	Height (Ext): 6"	Weight (Net): 968 lb Volume (Net): 0.25cu.yd
----------------------------------	--------------------------------	--------------------	------------------	---