

Job Name: 23-2792 - Teal Dr. Development  
 Job Location: Gallatin, TN  
 Contractor: Stewart Richey

Plant: 100  
 3/25/2026 1:42:48 PM

Tech: J. Horsley - F  
 PC: C. Goff

**Structure ID: STM-C4**

**P2 MH060LD13-30SQ**

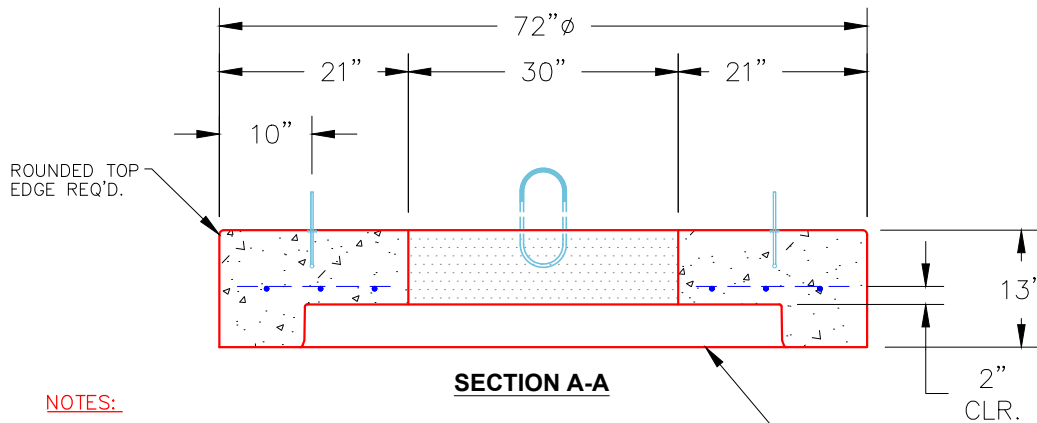
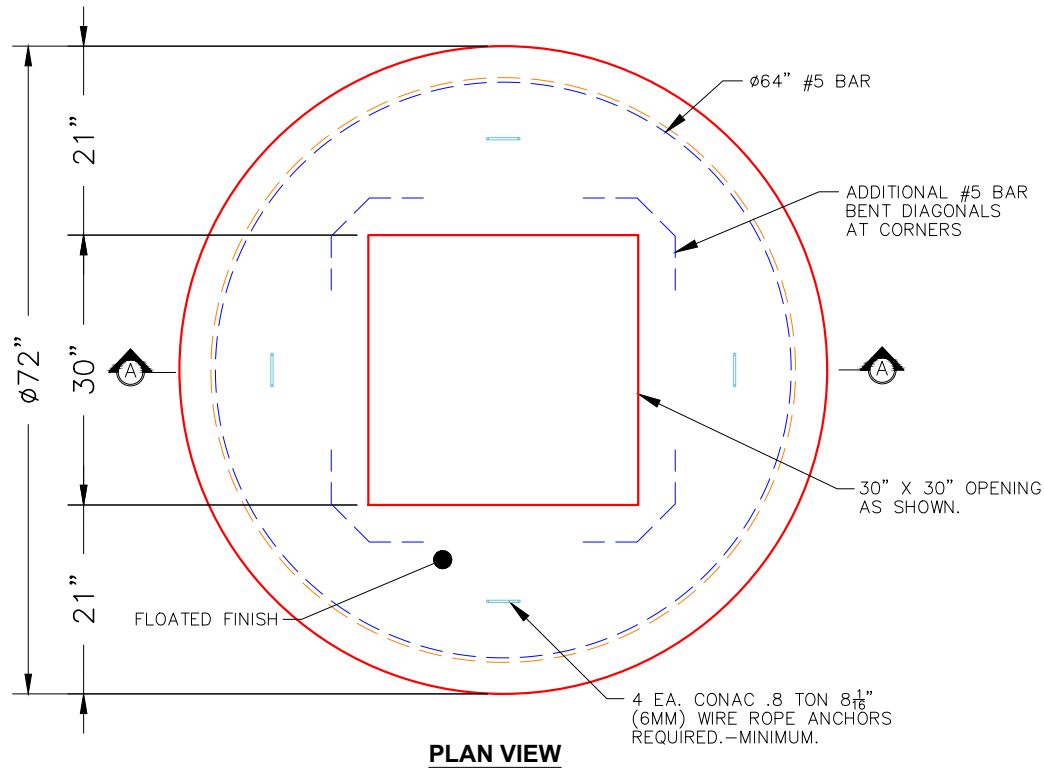
**MH FLAT TOP w/30"x30" Hole F/G**

- P3) 30" x 30" - CASTING HEIGHT - 6"
- P2) 60" - MH FLAT TOP w/30"x30" Hole F/G - 13"
- P1) 60" - MH BASE T/n - 66"
- 1) CASTING - JBS 3101 Single Set (F/G/H)
- 1) 60" - Conseal CS-102 1.00"
- 1) 30" x 30" - Conseal CS-102 1.00"
- 2) Hole - 40
- 1) Hole - 22
- 5) MH Step ML-10-TDS-NCR - 10"

	0 lb
	2400 lb
	8065 lb
	619 lb
	0 lb
	0 lb
	0 lb
	0 lb
	0 lb
	0 lb
Structure Total:	11083 lb

**Structure Notes:**  
 1. PER ASTM C478 SPECIFICATIONS.  
 2. CONCRETE = 4,000 PSI AT 28 DAYS.  
 3. NO INVERT CHANNEL.  
 4. CASTING BY ICAST (JBS 3101 SINGLE SET (F/G/H))

REINFORCING PER ASTM A615 (GRADE 60).  
 - TOP SLAB (As .62) #5 BARS AT 6" C.C.E.W..  
 - RISER/WALLS (As .18)  
 - FLOOR (As .37) #5 BARS AT 10" C.C.E.W.



- NOTES:**
1. MANUFACTURED TO ASTM C-478 (LATEST REVISION).
  2. CONCRETE: 4,000 PSI AT 28 DAYS.
  3. REINFORCING: #5 BAR @ 6" O.C. E.W. (GRADE 60).

STANDARD SINGLE OFFSET GROOVE JOINT REQUIRED

Coating (Int): Coating (Ext):	Seam Up: Flat Seam Dn: Groove	Wall Thickness: 6"	Height (Ext): 13"	Weight (Net): 2400 lb Volume (Net): 0.61cu.yd
----------------------------------	----------------------------------	--------------------	-------------------	--