

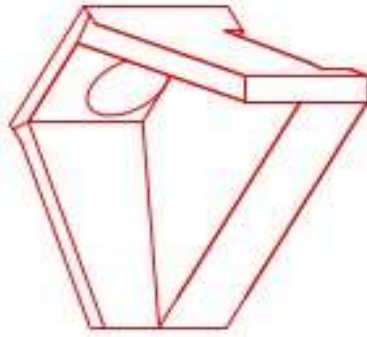


**Structure ID: STM-C1**

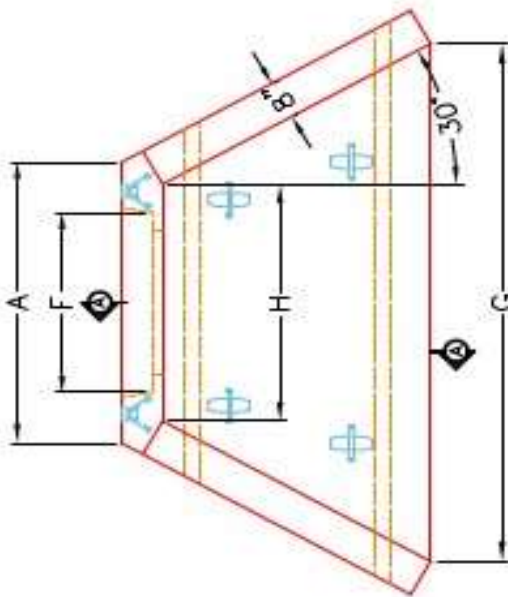
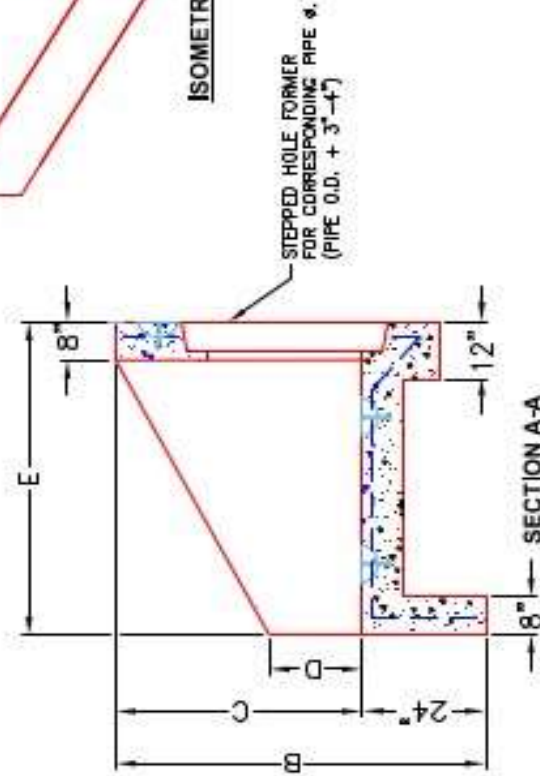
**P1 HWPC30**

**30" - PIPE CULVERT HEADWALL**

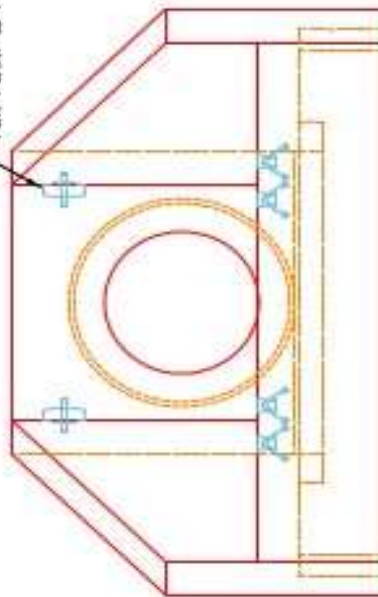
DIMENSIONS								WEIGHT	
PRE #	A	B	C	D	E	F	G	H	
3'	6'-4"	6'-4"	4'-0"	1'-4"	5'-0"	7'-6"	1'-8"	3'-4"	6,820 lbs.
3'	6'-4"	6'-4"	4'-0"	1'-4"	5'-0"	7'-6"	1'-8"	3'-4"	6,820 lbs.
4'	6'-4"	6'-7"	5'-5"	2'-4"	6'-5"	6'-6"	1'-8"	4'-11"	13,233 lbs.
4'	6'-4"	6'-7"	5'-5"	2'-4"	6'-5"	6'-5"	1'-8"	4'-11"	13,233 lbs.
5'	7'-4"	7'-4"	6'-6"	2'-4"	7'-4"	5'-8"	0'-8"	6'-0"	8,422 lbs.
6'	7'-4"	7'-4"	6'-6"	2'-4"	7'-4"	7'-4"	0'-8"	6'-0"	8,422 lbs.



ISOMETRIC VIEW



"A"-ANCHOR\* LIFTING SYSTEM FOR PLANT & FIELD HANDLING.



NOTES:

1. CONCRETE: KYTC APPROVED.
2. REINFORCING: #5 BAR @ 12" C/C E.W.-GRADE 60, (WITH 2" CONCRETE COVER MINIMUM)
3. REINFORCING BARS TO BE TACK WELDED OR TIED.
4. PIPE AND LIFTING ANCHOR POCKETS TO BE GROUTED WITH KYTC APPROVED NON-SHRINK GROUT.
5. DRAWING TO BE USED IN CONJUNCTION WITH KYTC STD. DRAWING RDH-110-02, RDH-210-03 AND THE STANDARD SPECIFICATIONS FOR ROAD AND BRIDGE CONSTRUCTION.
6. 3" CHAMFER ON ALL EXPOSED EDGES.
7. PREFORMED STEPPED HOLE SIZED AS PER O.D. OF PIPE + 3" - 4".

APPROVED FOR DESIGN ONLY



INFRASTRUCTURE PRECAST, INC.  
 401 WEST 7TH ST., SUITE 200, FT. WORTH, TX 76102  
 PHONE (817) 338-2288, FAX (817) 338-2484

KYTC 30" - 60" PPE CULVERT HEADWALL

DRAWING NO.: IKTIC PC-HH DATE: 12-14-20  
 DESIGNED BY: J.H. DAVIS, PE DRAWN BY: K. RICHARDS  
 WEB: WWW.ICASTINC.COM SCALE: 1/8"