

Job Name: 23-2455 - East Side Drainage Improvements
 Job Location: Evansville, IN 47715
 Contractor: Blankenberger Bros. Inc.

Plant: Beaver Dam

11/13/2025 2:35:42 PM

Tech: J. Coppage

PC: A. Chambers



Structure ID: STR-1003

P3 MH096TS17-48ECC

MH Transition Slab 48" Hole

- P6) 24" - CASTING HEIGHT - 7"
- P5) 48" - ECC CONE w/ 24" HOLE - 36"
- P4) 48" - MH RISER - 36"
- P3) 96" - MH Transition Slab 48" Hole - 17"
- P2) 96" - MH RISER - 96"
- P1) 96" - MH SEPARATE BASE-T (114" OD) - 8"
- 1) JOINT WRAP - 0.065"x6"x50' CONSEAL CS212
- 1) JOINT WRAP PRIMER - CONSEAL CS-75 (1 gal.)
- 1) Hole - 58
- 1) Hole - 68
- 14) MH Step ML-10-TDS-NCR - 10"

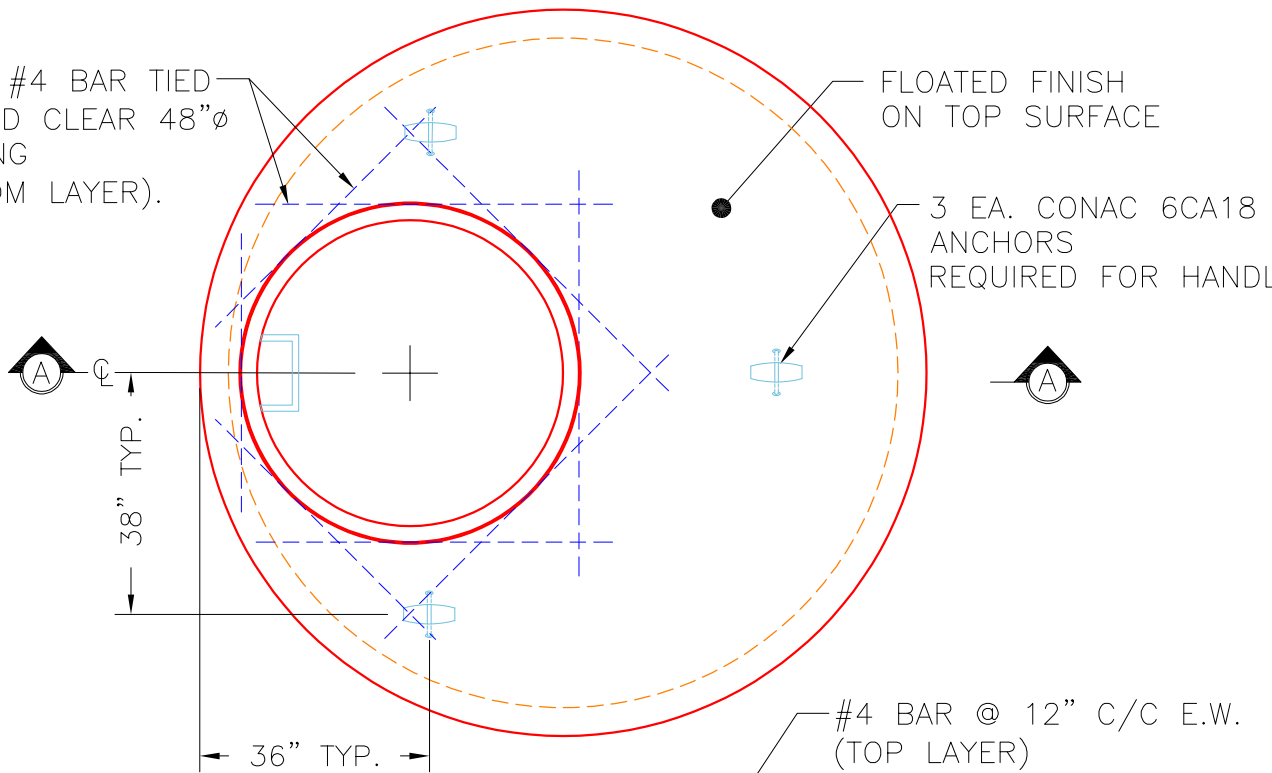
- Structure Notes:**
- MANUFACTURED TO ASTM C-478 SPECIFICATIONS
 - REINFORCING PER ASTM A615 (GRADE 60).
 - TYPE 4 CASTING (BY OTHERS).
 - CS-102 BUTYL MASTIC SEALANT FOR JOINTS (SUPPLIED BY ICAST).
 - INVERT (BY OTHERS).
 - STEP SPACING AT 12" C/C.

Structure Total: 43910 lb

EXTRA #4 BAR TIED AROUND CLEAR 48"Ø OPENING (BOTTOM LAYER).

FLOATED FINISH ON TOP SURFACE

3 EA. CONAC 6CA18 ANCHORS REQUIRED FOR HANDLING.

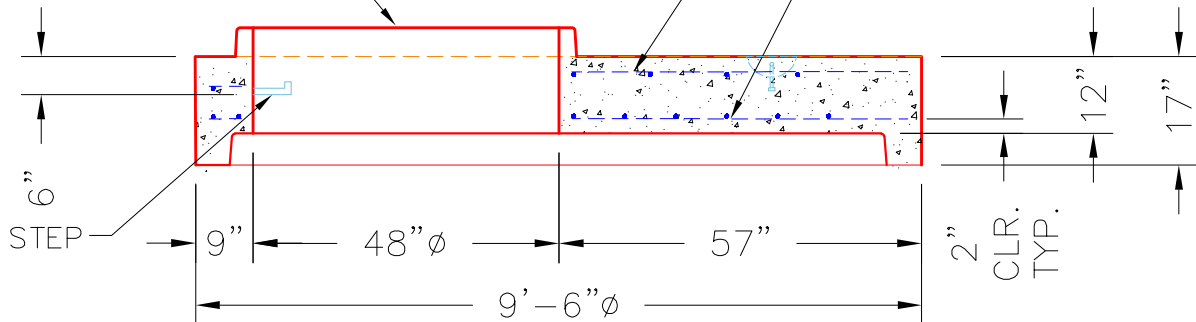


PLAN VIEW

48"Ø TRANSITION OPENING WITH TONGUE FOR 48"Ø RISERS.

#4 BAR @ 12" C/C E.W. (TOP LAYER)

#5 BAR @ 8" C/C E.W. (BOTTOM LAYER)



SECTION A-A

Coating (Int):
 Coating (Ext):

Seam Up: Tongue
 Seam Dn: Groove

Wall Thickness: 9"

Height (Ext): 17"

Weight (Net): 9106 lb
 Volume (Net): 2.33cu.yd