

Job Name: 23-2455 - East Side Drainage Improvements
 Job Location: Evansville, IN 47715
 Contractor: Blankenberger Bros. Inc.

Plant: Beaver Dam

Tech: J. Coppage

11/13/2025 2:38:17 PM

PC: A. Chambers



Structure ID: STR-1003

P2 MH096RS96

MH RISER

- P6) 24" - CASTING HEIGHT - 7"
- P5) 48" - ECC CONE w/ 24" HOLE - 36"
- P4) 48" - MH RISER - 36"
- P3) 96" - MH Transition Slab 48" Hole - 17"
- P2) 96" - MH RISER - 96"
- P1) 96" - MH SEPARATE BASE-T (114" OD) - 8"
- 1) JOINT WRAP - 0.065"x6"x50' CONSEAL CS212
- 1) JOINT WRAP PRIMER - CONSEAL CS-75 (1 gal.)
- 1) Hole - 58
- 1) Hole - 68
- 14) MH Step ML-10-TDS-NCR - 10"

- Structure Notes:**
- MANUFACTURED TO ASTM C-478 SPECIFICATIONS
 - REINFORCING PER ASTM A615 (GRADE 60).
 - TYPE 4 CASTING (BY OTHERS).
 - CS-102 BUTYL MASTIC SEALANT FOR JOINTS (SUPPLIED BY ICAST).
 - INVERT (BY OTHERS).
 - STEP SPACING AT 12" C/C.

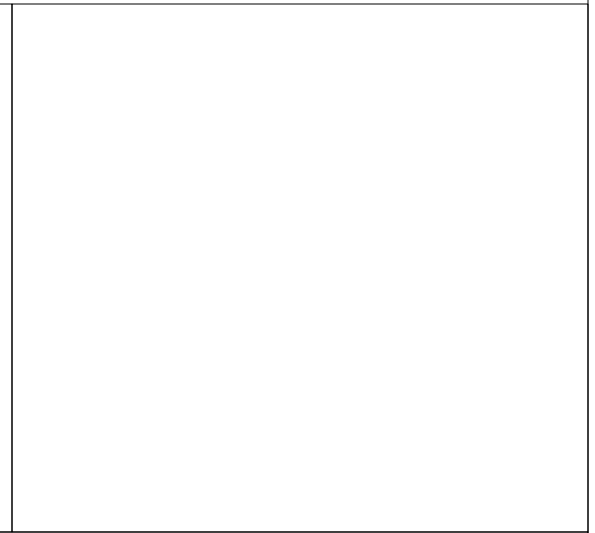
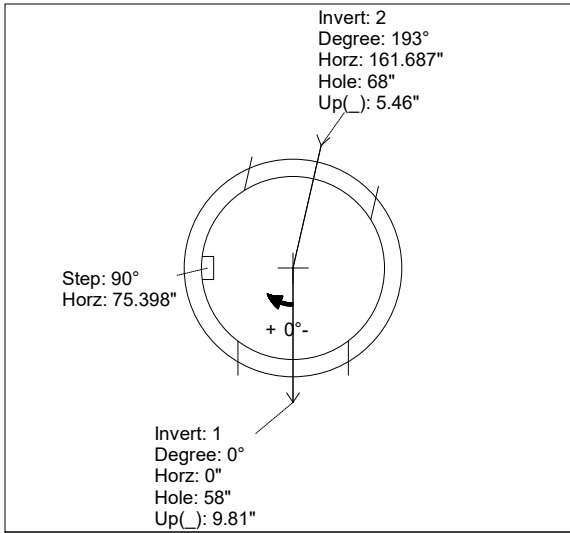
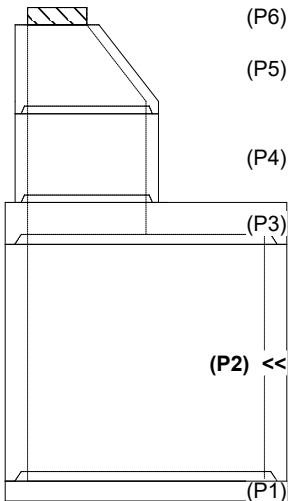
Structure Total: 43910 lb

Rim: 387.61' Rim to Invert: 14.74' Slack: 0.84" Sump: 15.96" Step Position: 90°

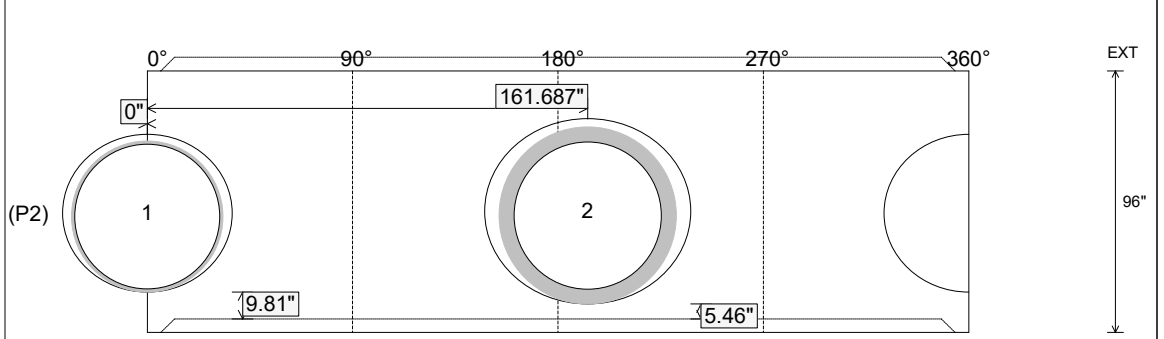
Position	Elev	Angle	Ext. (cw)	Pipe	Pipe OD	Connector	Hole	Horz Size	Up ()	Offset
Invert 1	372.87'	0°	0"	54" HDPE (DUROMAXX)	55.5"	Hole 58	58"	62.277"	9.81"	0"
Invert 2	372.87'	193°	192.004"	54" RCP B WALL	65"	Hole 68	68"	75.565"	5.46"	0"
Invert 3										
Invert 4										
Invert 5										
Invert 6										
Invert 7										
Invert 8										

RIGHT-SIDE UP VIEW (int. dimensions)

UPSIDE-DOWN VIEW (int. dimensions)



INSIDE WALL DIMENSIONS



Coating (Int):
 Coating (Ext):

Seam Up: Tongue
 Seam Dn: Groove

Wall Thickness: 9"
 Floor Height: 0"

Height (Int): 96"
 Height (Ext): 96"

Weight (Net): 18804 lb
 Volume (Net): 4.8cu.yd