

Job Name: 23-2455 - East Side Drainage Improvements
 Job Location: Evansville, IN 47715
 Contractor: Blankenberger Bros. Inc.

Plant: Beaver Dam

11/13/2025 2:38:16 PM

Tech: J. Coppage

PC: A. Chambers



Structure ID: STR-1003

P1 MH096SB08

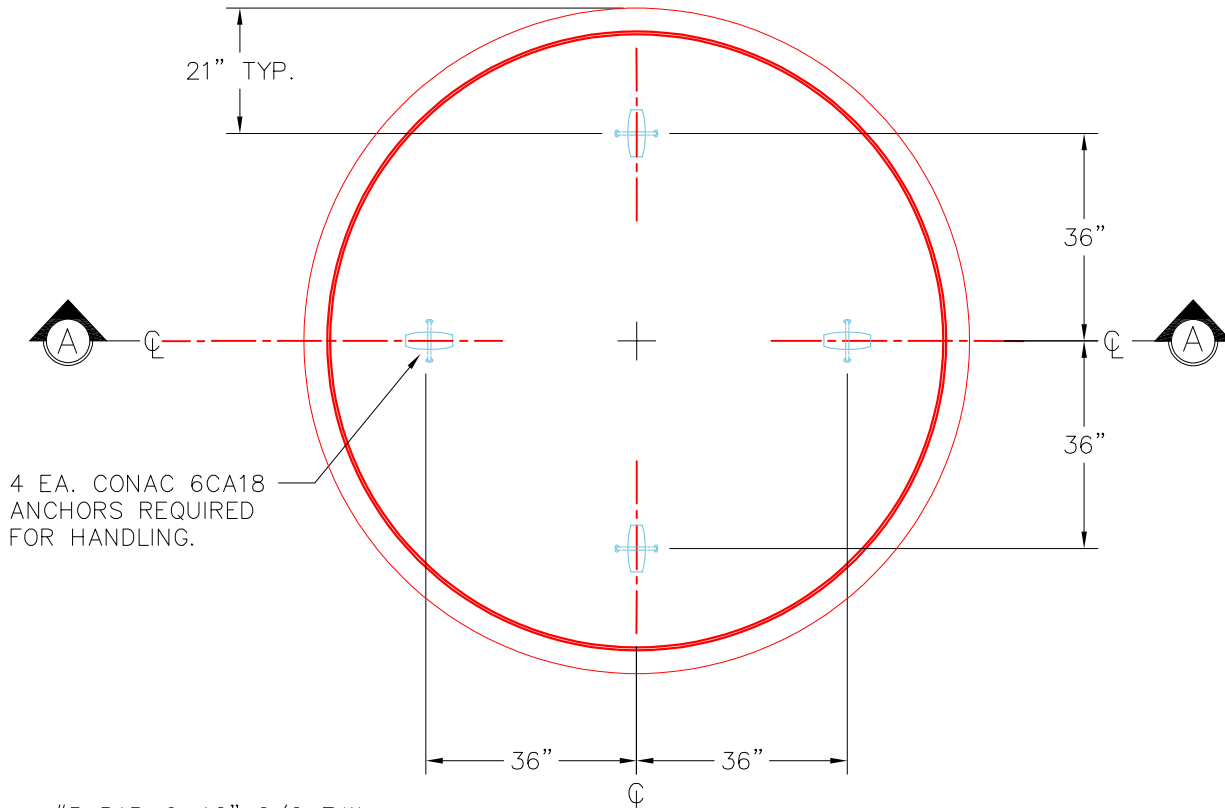
MH SEPARATE BASE-T (114" OD)

- P6) 24" - CASTING HEIGHT - 7"
- P5) 48" - ECC CONE w/ 24" HOLE - 36"
- P4) 48" - MH RISER - 36"
- P3) 96" - MH Transition Slab 48" Hole - 17"
- P2) 96" - MH RISER - 96"
- P1) 96" - MH SEPARATE BASE-T (114" OD) - 8"
- 1) JOINT WRAP - 0.065"x6"x50' CONSEAL CS212
- 1) JOINT WRAP PRIMER - CONSEAL CS-75 (1 gal.)
- 1) Hole - 58
- 1) Hole - 68
- 14) MH Step ML-10-TDS-NCR - 10"

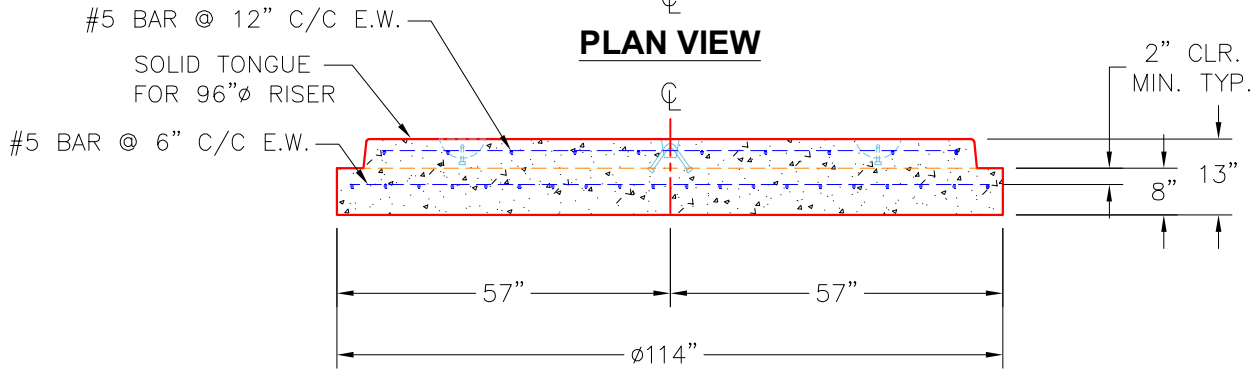
- Structure Notes:**
- 0 lb -MANUFACTURED TO ASTM C-478 SPECIFICATIONS
 - 3000 lb -REINFORCING PER ASTM A615 (GRADE 60).
 - 2515 lb -TYPE 4 CASTING (BY OTHERS).
 - 9106 lb -CS-102 BUTYL MASTIC SEALANT FOR JOINTS (SUPPLIED BY ICAST).
 - 18804 lb -INVERT (BY OTHERS).
 - 10484 lb -STEP SPACING AT 12" C/C.
 - 0 lb
 - 0 lb
 - 0 lb
 - 0 lb
 - 0 lb

Structure Total: 43910 lb

Rim: 387.61' Rim to Invert: 14.74' Slack: 0.84" Sump: 15.96" Step Position: 90°



PLAN VIEW



SECTION A-A

Coating (Int):
 Coating (Ext):

Seam Up: Tongue
 Seam Dn: n/a

Wall Thickness: 9"
 Floor Height: 8"

Height (Int): 0"
 Height (Ext): 0"

Weight (Net): 10484 lb
 Volume (Net): 2.68cu.yd