

Job Name: 23-1914 - KYTC Daviess County ID 231032
 Job Location: Owensboro, KY 42701
 Contractor: Mick-Murf Construction Inc.

Plant: 100
 1/8/2026 10:59:05 AM

Tech: J. Horsley
 PC: C. Goff



Structure ID: 099 (KY B 10ft)

P2 BX024036-08TS024024

CB FT REDUCER 24"X24" HOLE T/F

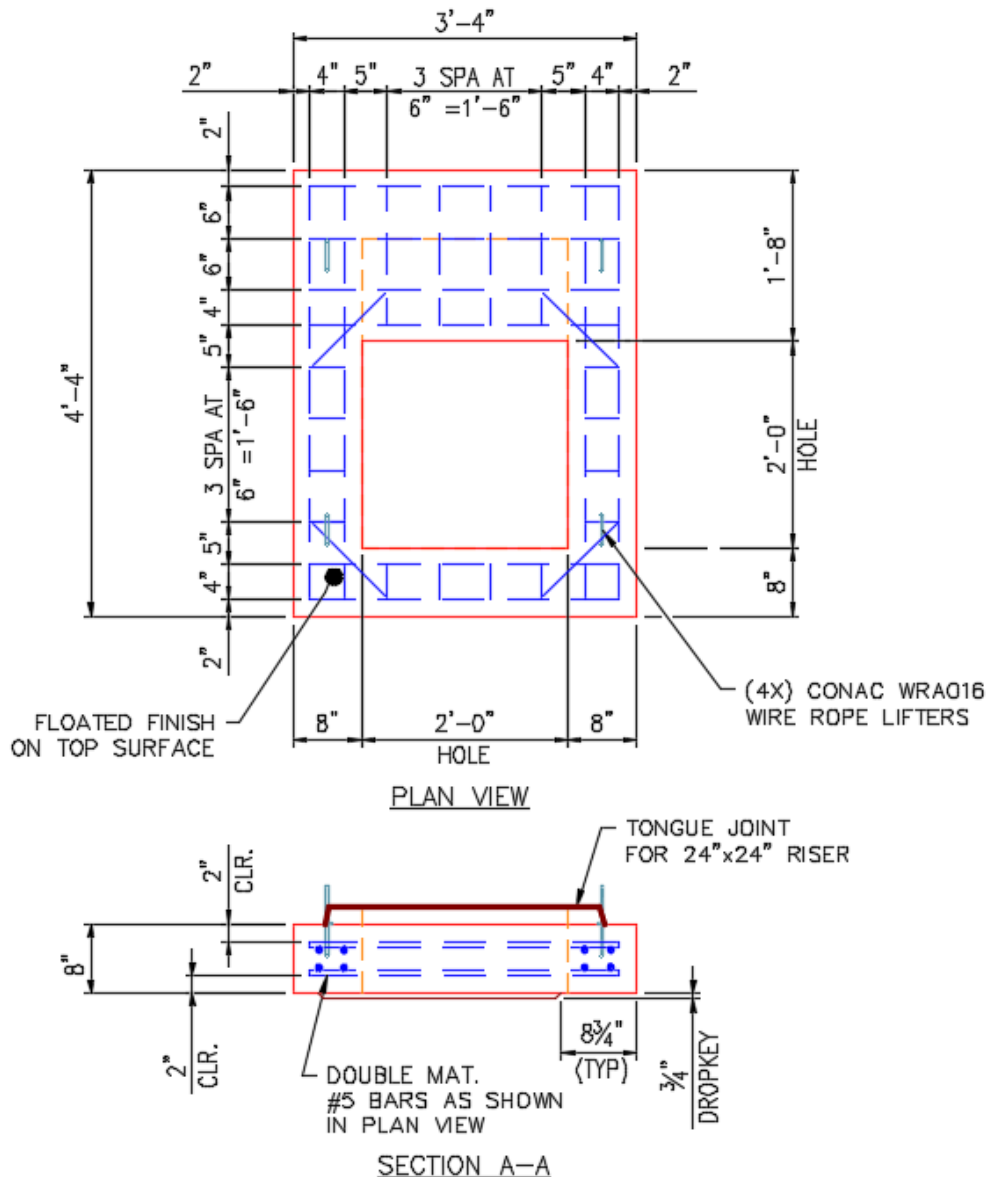
- P4) 8" x 120" - CB INLET KY B 10' TOP F/G - 9"
- P3) 24" x 120" - CB INLET KY B 10' BOTTOM LEFT T/G - 17"
- P2) 24" x 36" - CB FT REDUCER 24"X24" HOLE T/F - 8"
- P1) 24" x 36" - BOX BASE 8inW, 8inF, Variable Ht F/n - 26"
- 1) 24" x 36" - Conseal CS-102 1.00"
- 1) 24" x 24" - Conseal CS-102 1.00"
- 1) Hole - 22
- 2) Hole - 18

1660 lb
 2650 lb
 1010 lb
 3413 lb
 0 lb
 0 lb
 0 lb
 0 lb
 0 lb

 Structure Total: 8733 lb

Structure Notes:
 ** KYTC STATE PROJECT **
 1. PER KYTC CBI TYPE B / ASTM C913 SPEC'S.
 2. CONCRETE = 4,000 PI AT 28 DAYS.
 3. NO STEPS & NO INVERT CHANNEL.
 5. CBI KY B F/G - BY OTHERS.

 REINFORCING PER ASTM A615 (GRADE 60).
 - TOP PHASE (As .62) #5 BARS AT 6" C.C.E.W.
 - TRANS SLAB (As .62) #5 BARS AT 6" C.C.E.W. (DBL MAT.)
 - WALLS/FLOOR (As .31) #5 BARS AT 12" C.C.E.W.



Coating (Int):
 Coating (Ext):

Seam Up: Tongue
 Seam Dn: Flat

Wall Thickness: 8"

Height (Ext): 8"

Weight (Net): 1010 lb
 Volume (Net): 0.26cu.yd