

Job Name: 23-1914 - KYTC Daviess County ID 231032  
 Job Location: Owensboro, KY 42701  
 Contractor: Mick-Murf Construction Inc.

Plant: 100

Tech: J. Horsley

1/8/2026 10:59:04 AM

PC: C. Goff



**Structure ID: 095 (DBI-13G)**

**P2 BX024030-08LD08-15X27**

**CB FLAT TOP 8"W w/15"x27" HOLE F/F**

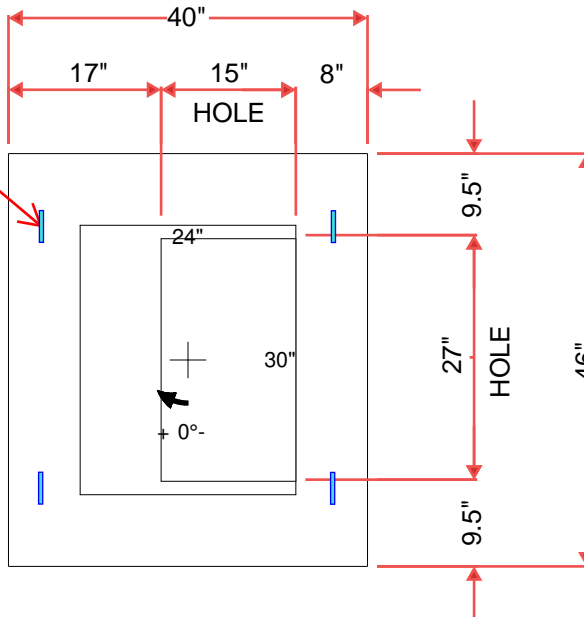
- P3) 15" x 27" - P.I.P. - BY OTHERS - 8"
- P2) 24" x 30" - CB FLAT TOP 8"W w/15"x27" HOLE F/F - 8"
- P1) 24" x 30" - BOX BASE 8inW, 8inF, Variable Ht F/n - 46"
- 1) 24" x 30" - Conseal CS-102 1.00"
- 2) Hole - 22
- 1) Hole - 6

0 lb  
 963 lb  
 5004 lb  
 0 lb  
 0 lb  
 0 lb  
 -----  
 Structure Total: 5967 lb

**Structure Notes:**  
**\*\*KYTC STATE PROJECT\*\***  
 1. KYTC DBI TYPE 13G / ASTM C-913 SPEC'S.  
 2. CONCRETE = 4,000 PSI AT 28 DAYS.  
 3. NO STEPSS & NO INVERT CHANNEL.  
 4. HOE KY-230G (DBI-13G F/G) BY OTHERS.  
 5. STUB #5 BARS 6" OUT TOP OF TOP SLAB SPA AT 12" C/C AROUND 15X27 HOLE

REINFORCING PER ASTM A615 (GRADE 60).  
 - TOP SLAB (As .62) #5 BARS AT 6" C.C.E.W. (DBL MAT).  
 - WALLS (As .31) #5 BARS AT 12" C.C.E.W.  
 - FLOOR (As .31) #5 BARS AT 12" C.C.E.W.

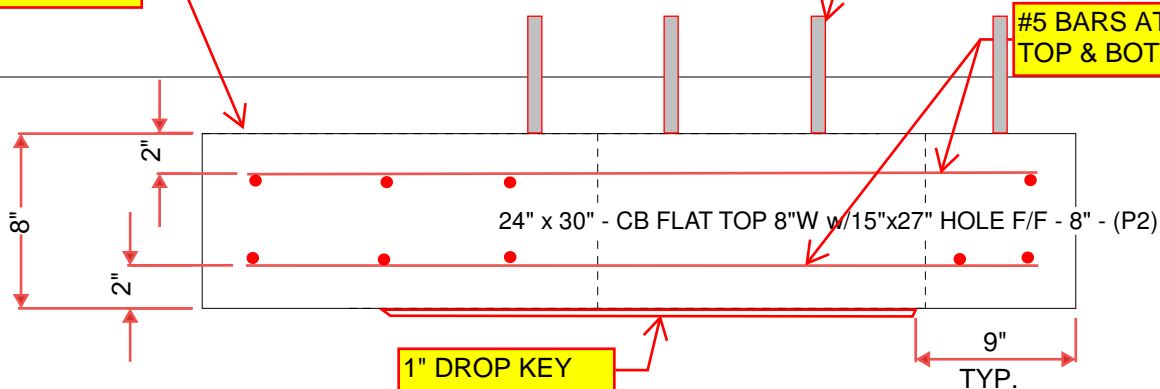
4 EA. WRA016 CONAC WIRE ROPE ANCHORS



STUB #5 BARS 6" OUT TOP OF SLAB SPA AT 12" C/C AROUND 15X27 HOLE

FLOAT FINISH ON TOP SURFACE

#5 BARS AT 6" C.C.E.W TOP & BOTTOM LAYERS



1" DROP KEY

Coating (Int):  
 Coating (Ext):

Seam Up: Flat  
 Seam Dn: Flat

Wall Thickness: 8"

Height (Ext): 8"

Weight (Net): 963 lb  
 Volume (Net): 0.25cu.yd