

Job Name: 23-1914 - KYTC Daviess County ID 231032
 Job Location: Owensboro, KY 42701
 Contractor: Mick-Murf Construction Inc.

Plant: 100
 1/8/2026 10:59:04 AM

Tech: J. Horsley
 PC: C. Goff



Structure ID: 094 (DBI-13G)

P2 BX036036-08LD08-15X27

CB FLAT TOP 8"W w/15"x27" HOLE F/F

- P3) 15" x 27" - P.I.P. - BY OTHERS - 8"
- P2) 36" x 36" - CB FLAT TOP 8"W w/15"x27" HOLE F/F - 8"
- P1) 36" x 36" - BOX BASE 8inW, 8inF, Variable Ht F/n - 38"
- 1) 36" x 36" - Conseal CS-102 1.00"
- 2) Hole - 22
- 1) Hole - 6

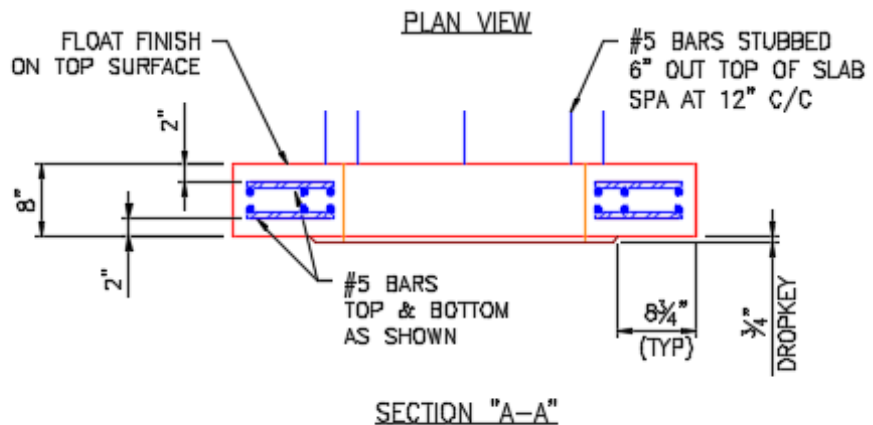
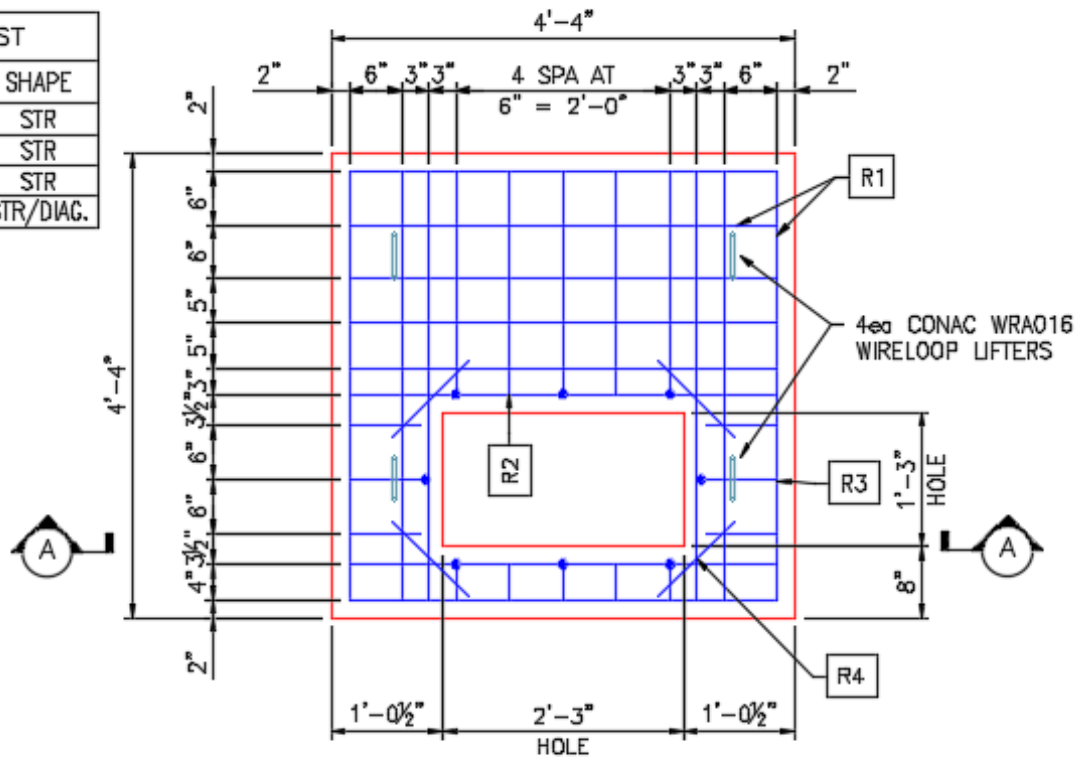
0 lb
 1543 lb
 5693 lb
 0 lb
 0 lb
 0 lb

 Structure Total: 7236 lb

Structure Notes:
 KYTC STATE PROJECT
 1. KYTC DBI TYPE 13G / ASTM C-913 SPEC'S.
 2. CONCRETE = 4,000 PSI AT 28 DAYS.
 3. NO STEPSS & NO INVERT CHANNEL.
 4. HOE KY-230G (DBI-13G F/G) BY OTHERS.
 5. STUB #5 BARS 6" OUT TOP OF TOP SLAB SPA AT 12" C/C AROUND 15X27 HOLE

REINFORCING PER ASTM A615 (GRADE 60).
 - TOP SLAB (As .62) #5 BARS AT 6" C.C.E.W. (DBL MAT).
 - WALLS (As .31) #5 BARS AT 12" C.C.E.W.
 - FLOOR (As .31) #5 BARS AT 12" C.C.E.W.

| REINFORCEMENT CUT LIST | | | | |
|------------------------|-----|----------|--------|-----------|
| BAR | QTY | MATERIAL | LENGTH | SHAPE |
| R1 | 28 | #5 BAR | 4'-0" | STR |
| R2 | 10 | #5 BAR | 2'-1" | STR |
| R3 | 12 | #5 BAR | 0'-8" | STR |
| R4 | 8 | #5 BAR | 1'-0" | STR/DIAG. |



| | | | | |
|----------------------------------|--------------------------------|--------------------|------------------|--|
| Coating (Int): Coating (Ext): | Seam Up: Flat Seam Dn: Flat | Wall Thickness: 8" | Height (Ext): 8" | Weight (Net): 1543 lb Volume (Net): 0.39cu.yd |
|----------------------------------|--------------------------------|--------------------|------------------|--|