

Job Name: 23-1914 - KYTC Daviess County ID 231032
 Job Location: Owensboro, KY 42701
 Contractor: Mick-Murf Construction Inc.

Plant: 100

Tech: J. Horsley

1/13/2026 11:49:08 AM

PC: C. Goff



Structure ID: 087B (KY B 10ft)

P3 BX242408-VF

BOX RISER 8inW, Variable Ht F/G

- P6) 8" x 120" - CB INLET KY B 10' TOP F/G - 9"
- P5) 24" x 120" - CB INLET KY B 10' BOTTOM LEFT T/G - 17"
- P4) 24" x 24" - FIELD ADJUSTMENT - 3"
- P3) 24" x 24" - BOX RISER 8inW, Variable Ht F/G - 26"
- P2) 36" x 60" - BX TRANS. SLAB 8inW w/24"x24" HOLE ECC T/F - 8"
- P1) 36" x 60" - BOX BASE 8inW, 8inF, Variable Ht F/n - 72"
- 1) 36" x 60" - Conseal CS-102 1.00"
- 2) 24" x 24" - Conseal CS-102 1.00"
- 1) Hole - 46
- 1) Hole - 22
- 1) Hole - 40
- 1) Hole - 6

- 1660 lb
- 2650 lb
- 0 lb
- 2215 lb
- 2266 lb
- 11265 lb
- 0 lb
- 0 lb
- 0 lb
- 0 lb
- 0 lb
- 0 lb

Structure Total: 20057 lb

Structure Notes:

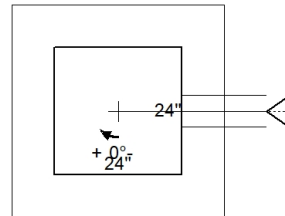
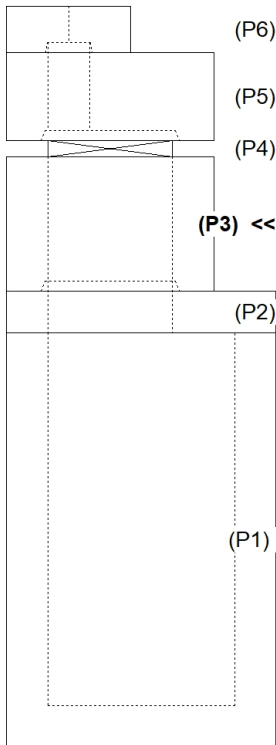
- ** KYTC STATE PROJECT **
- 1. PER KYTC CBI TYPE B / ASTM C913 SPEC'S.
- 2. CONCRETE = 4,000 PI AT 28 DAYS.
- 3. NO STEPS & NO INVERT CHANNEL.
- 5. CBI KY B F/G - BY OTHERS.

REINFORCING PER ASTM A615 (GRADE 60).
 - TOP PHASE (As .62) #5 BARS AT 6" C.C.E.W.
 - TRANS SLAB (As .62) #5 BARS AT 6" C.C.E.W. (DBL MAT.)
 - WALLS/FLOOR (As .31) #5 BARS AT 12" C.C.E.W.

Rim: 424.95' Rim to Invert: 11.24' Slack: -0.12" Sump: 0" Step Position:

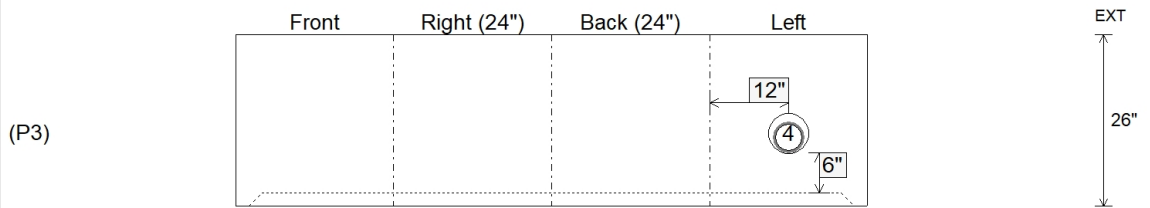
Position	Elev	Angle	Ext. (cw)	Pipe	Pipe OD	Connector	Hole	Horz Size	Up (L)	Offset
Invert 1										
Invert 2										
Invert 3										
Invert 4	421.08'	270°	20"	4" HDPE (perf pipe)	4.8"	Hole 6	6"	6"	6"	0"
Invert 5										
Invert 6										
Invert 7										
Invert 8										

RIGHT-SIDE UP VIEW (int. dimensions)



Invert: 4
 Degree: 270°
 Horz: 12"
 Hole: 6"
 Up(L): 6"

INSIDE WALL DIMENSIONS



Coating (Int):
 Coating (Ext):

Seam Up: Flat
 Seam Dn: Groove

Wall Thickness: 8"
 Floor Height: 0"

Height (Int): 26"
 Height (Ext): 26"

Weight (Net): 2215 lb
 Volume (Net): 0.57cu.yd