

Job Name: 23-1914 - KYTC Daviess County ID 231032	Plant: 100	Tech: J. Horsley	
Job Location: Owensboro, KY 42701 Contractor: Mick-Murf Construction Inc.	1/14/2026 12:52:23 PM	PC: C. Goff	

Structure ID: 087 (KY B 10ft)

P3 BX2424-08R42 BOX RISER 8inW F/G

P6) 8" x 120" - CB INLET KY B 10' TOP F/G - 9"	1660 lb
P5) 24" x 120" - CB INLET KY B 10' BOTTOM LEFT T/G - 17"	2650 lb
P4) 24" x 24" - FIELD ADJUSTMENT - 3"	0 lb
P3) 24" x 24" - BOX RISER 8inW F/G - 42"	3590 lb
P2) 60" x 60" - CB FT REDUCER 24"X24" HOLE T/F - 8"	3491 lb
P1) 60" x 60" - BOX BASE 8inW, 8inF F/n - 60"	12602 lb
1) 60" x 60" - Conseal CS-102 1.00"	0 lb
2) 24" x 24" - Conseal CS-102 1.00"	0 lb
2) Hole - 46	0 lb
1) Hole - 6	0 lb
Structure Total:	23993 lb

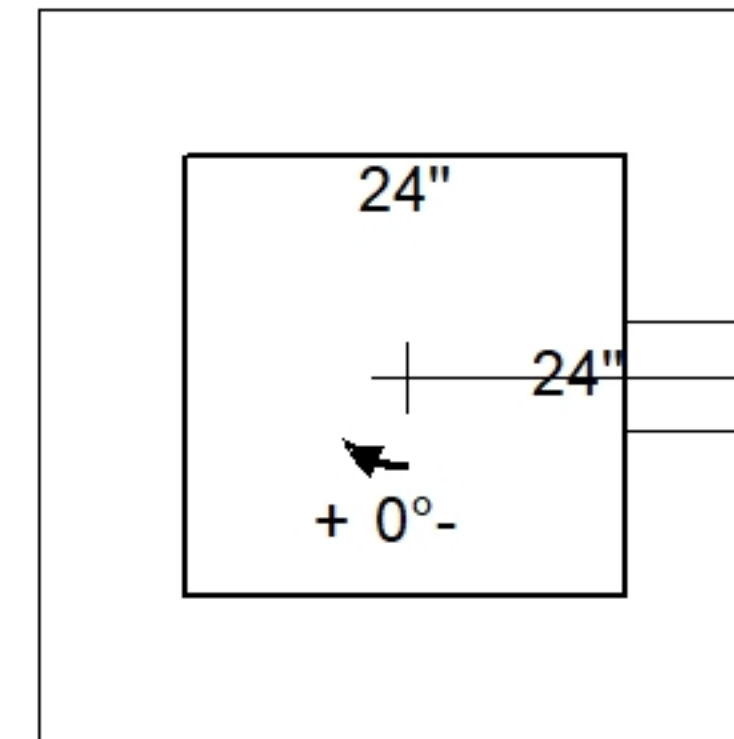
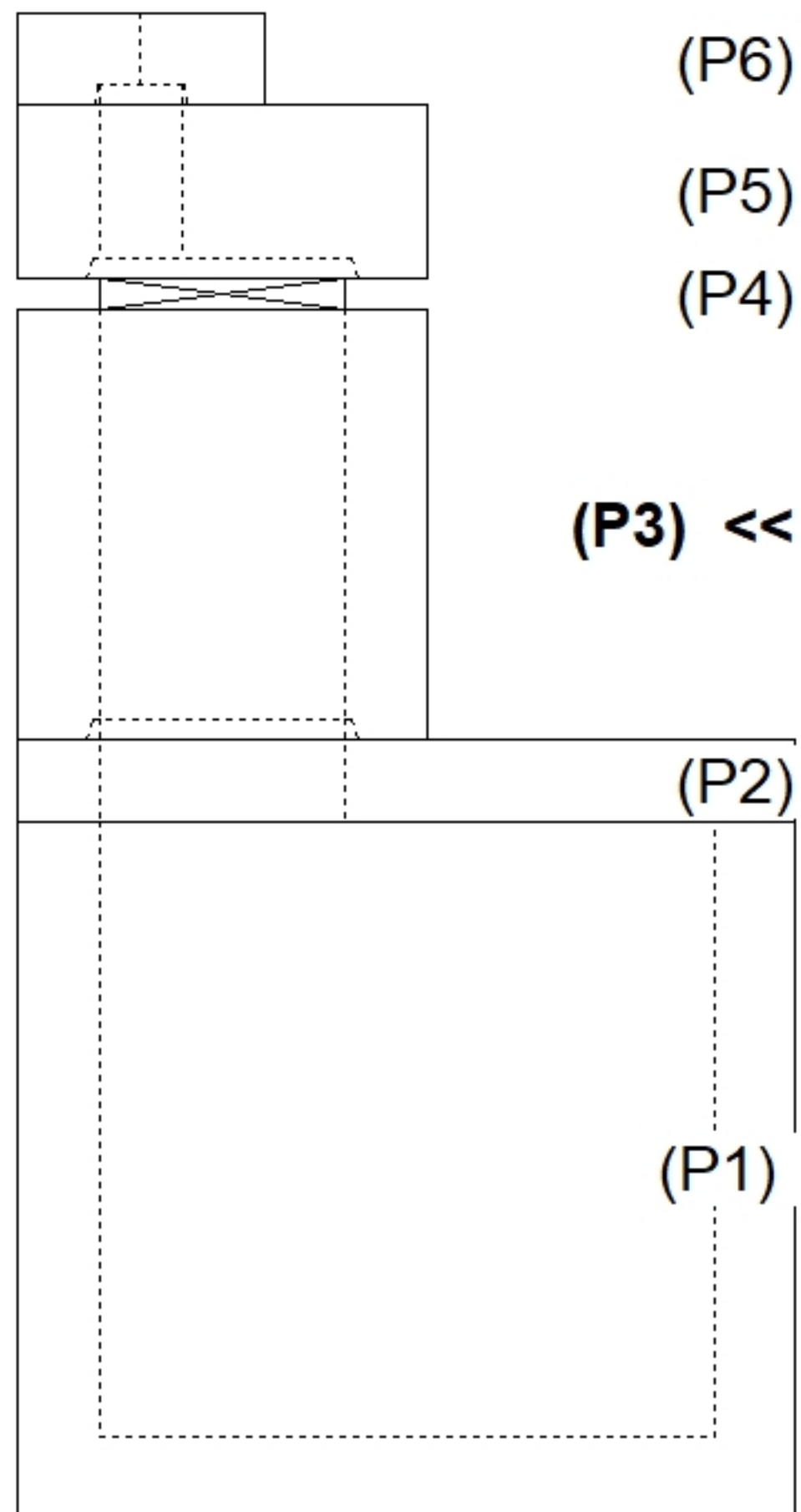
Structure Notes:
**** KYTC STATE PROJECT ****
 1. PER KYTC CBI TYPE B / ASTM C913 SPEC'S.
 2. CONCRETE = 4,000 PI AT 28 DAYS.
 3. NO STEPS & NO INVERT CHANNEL.
 5. CBI KY B F/G - BY OTHERS.

 REINFORCING PER ASTM A615 (GRADE 60).
 - TOP PHASE (As .62) #5 BARS AT 6" C.C.E.W.
 - WALLS/FLOOR (As .31) #5 BARS AT 6" C.C.E.W.

Rim: 424.69' Rim to Invert: 11.63' Slack: 0.56" Sump: 0" Step Position:

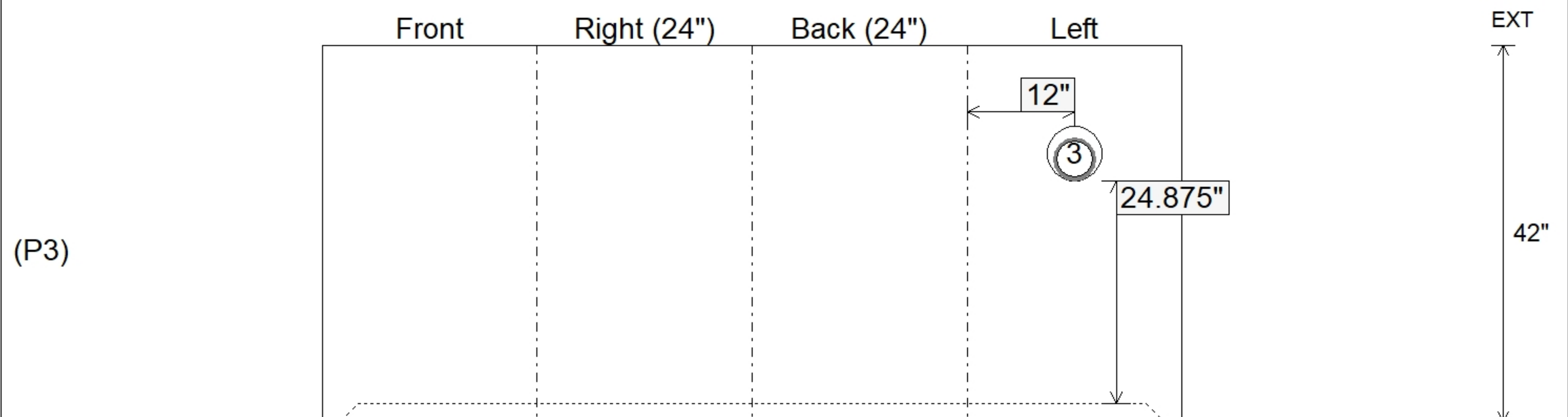
Position	Elev	Angle	Ext. (cw)	Pipe	Pipe OD	Connector	Hole	Horz Size	Up ()	Offset
Invert 1										
Invert 2										
Invert 3	421'	270°	20"	4" HDPE (perf pipe)	4.8"	Hole 6	6"	6"	24.875"	0"
Invert 4										
Invert 5										
Invert 6										
Invert 7										
Invert 8										

RIGHT-SIDE UP VIEW (int. dimensions)



Invert: 3
 Degree: 270°
 Horz: 12"
 Hole: 6"
 Up(): 24.875"

INSIDE WALL DIMENSIONS



Coating (Int):	Seam Up: Flat	Wall Thickness: 8"	Height (Int): 42"	Weight (Net): 3590 lb
Coating (Ext):	Seam Dn: Groove	Floor Height: 0"	Height (Ext): 42"	Volume (Net): 0.92cu.yd